

CAREGIVERS AND LOSS

Pam Orzeck, MSW

Coordinator of Leading practices in Caregiver Support - CIUSSS CODIM
Adjunct Professor of Social Work – McGill University

Isabelle Van Pevenage, PhD

Researcher at Cregés
Associate professor of Sociology – Université de Montréal

*Centre intégré
universitaire de santé
et de services sociaux
du Centre-Ouest-
de-l'Île-de-Montréal*

Québec 

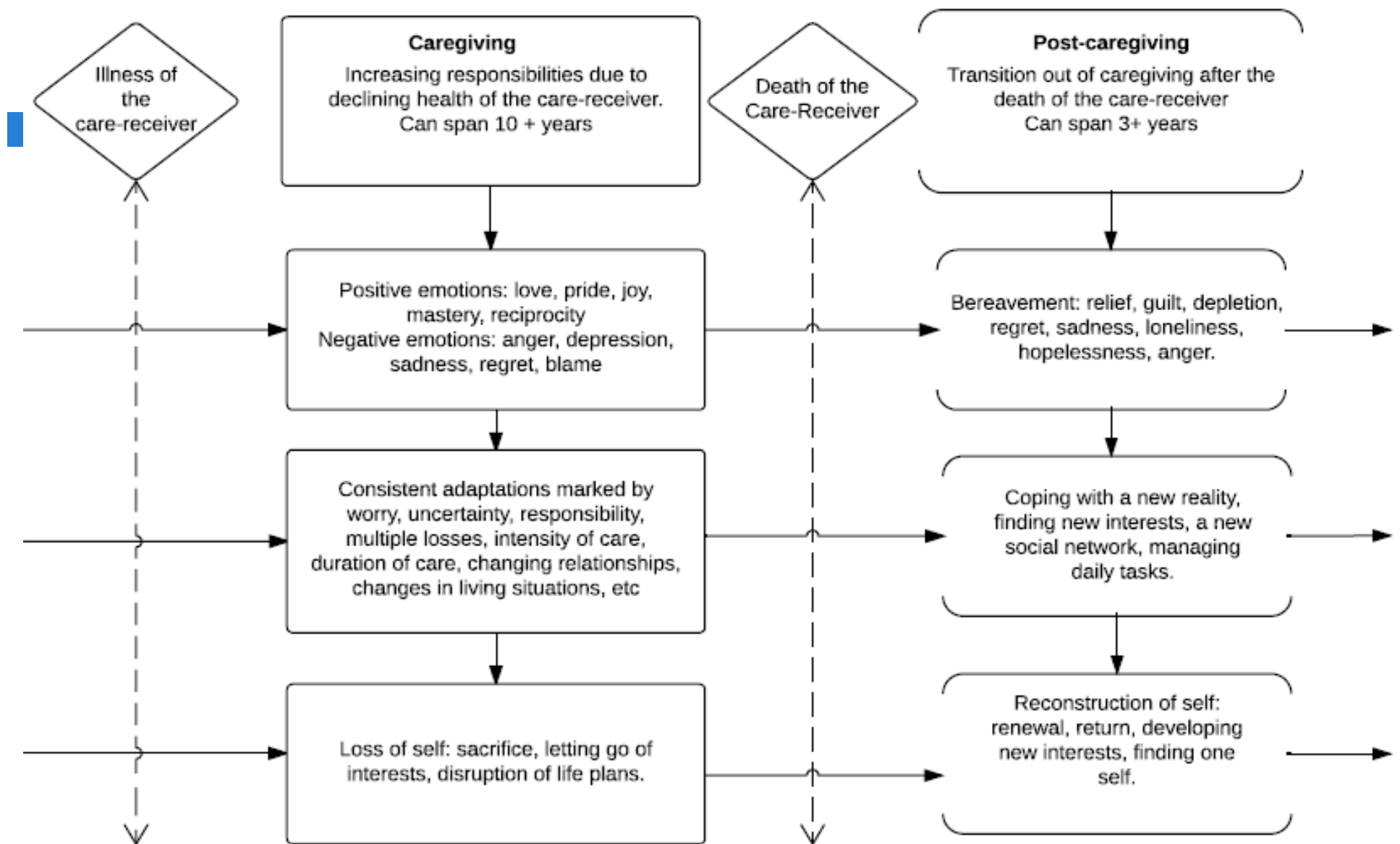


**Centre de recherche et d'expertise
en gérontologie sociale**

November 10th 2016

Current and future challenges in caregiving





Questions



- How do we identify the caregivers who are the most fragile ?
- How do we highlight their strengths?

Research on factors of risk

- Literature review
- Identification of 9 "groups" of factors

The caregiver	The social network
The care-receiver	The professional and financial situation
The relationship between the caregiver and care-receiver	The health care system
The family	The circumstances of the death
<i>Factors of complicated grief/bereavement</i>	

CARTOGRAPHY OF FACTORS INFLUENCING CAREGIVERS' EXPERIENCES OF LOSS

THE CAREGIVER

- Age
- Gender
- Personality / character traits
- Emotional reactions
- Connection to the care-receiver
- Mental health
- Physical health
- Life projects
- Problem management
- Capacity to comprehend
- Capacity to express oneself
- Capacity to deal with stress - resilience
- Capacity to ask for help
- Meaning of the illness/death
- Experience with prior caregiving
- Meaning of the caregiving
- Vision of life
- Spirituality
- Other _____

THE CARE-RECEIVER

- Personality / character traits
- Age
- Type of illness
- Length of illness
- Meaning of the illness/death
- Life projects
- Spirituality
- Other _____

CIRCUMSTANCES OF THE DEATH

- Announcement of death
- Place of death
- Presence during the death
- Type of death (ie: medical aid in dying)
- Anticipation of death
- Other _____

THE CAREGIVING RELATIONSHIP

- The nature of the relationship
- The duration of the relationship
- Communication
- Living situation
- Emotional aspects
- Practical support
- Financial support
- Other _____

THE FAMILY

- Recognition of the caregiver role
- Family cohesion/closeness
- Intra-family communication
- Family-health care system communication
- Family adaptability
- Other _____

SOCIAL NETWORK

- Social life
- Assistance from family/friends
- Support from family/friends
- Neighbours
- Rituals
- Religious or spiritual groups
- Other _____

PROFESSIONAL AND FINANCIAL SITUATION

- Employment
- Work schedule
- Colleagues
- Work flexibility
- Financial resources
- Other _____

THE HEALTH CARE SYSTEM

- Experience waiting for a diagnosis
- Length of time waiting for a diagnosis
- Symptom management
- Quality of information given
- Listening quality
- Satisfaction with the care given
- Do not resuscitate orders (DNR)
- Advanced medical directives
- Relationship between the caregiver and the health care team
- Availability of the health care team
- Coherence amongst the health care team
- Possibilities of respite
- Spiritual support offered
- Orientation to external resources
- Post-care follow up
- Psychosocial support
- Home care services
- Other _____

FACTORS OF COMPLICATED GRIEF

- Death of a child
- Violent or brutal death
- Sudden or lengthy death
- Multiple losses of grief
- Personality issues/history of mental health issues
- Social isolation
- Suicide
- Enmeshment
- Other _____

CARTOGRAPHY OF FACTORS INFLUENCING CAREGIVERS' EXPERIENCES OF LOSS

THE CAREGIVER

- Age
- Gender
- Personality / character traits
- Emotional reactions
- Connection to the care-receiver
- Mental health
- Physical health
- Life projects
- Problem management
- Capacity to comprehend
- Capacity to express oneself
- Capacity to deal with stress - resilience
- Capacity to ask for help
- Meaning of the illness/death
- Experience with prior caregiving
- Meaning of the caregiving
- Vision of life
- Spirituality
- Other _____

THE CARE-RECEIVER

- Personality / character traits
- Age
- Type of illness
- Length of illness
- Meaning of the illness/death
- Life projects
- Spirituality
- Other _____

CIRCUMSTANCES OF THE DEATH

- Announcement of death
- Place of death
- Presence during the death
- Type of death (ie: medical aid in dying)
- Anticipation of death
- Other _____

THE CAREGIVING RELATIONSHIP

- The nature of the relationship
- The duration of the relationship
- Communication
- Living situation
- Emotional aspects
- Practical support
- Financial support
- Other _____

THE FAMILY

- Recognition of the caregiver role
- Family cohesion/closeness
- Intra-family communication
- Family-health care system communication
- Family adaptability
- Other _____

SOCIAL NETWORK

- Social life
- Assistance from family/friends
- Support from family/friends
- Neighbours
- Rituals
- Religious or spiritual groups
- Other _____

PROFESSIONAL AND FINANCIAL SITUATION

- Employment
- Work schedule
- Colleagues
- Work flexibility
- Financial resources
- Other _____

THE HEALTH CARE SYSTEM

- Experience waiting for a diagnosis
- Length of time waiting for a diagnosis
- Symptom management
- Quality of information given
- Listening quality
- Satisfaction with the care given
- Do not resuscitate orders (DNR)
- Advanced medical directives
- Relationship between the caregiver and the health care team
- Availability of the health care team
- Coherence amongst the health care team
- Possibilities of respite
- Spiritual support offered
- Orientation to external resources
- Post-care follow up
- Psychosocial support
- Home care services
- Other _____

FACTORS OF COMPLICATED GRIEF

- Death of a child
- Violent or brutal death
- Sudden or lengthy death
- Multiple losses of grief
- Personality issues/history of mental health issues
- Social isolation
- Suicide
- Enmeshment
- Other _____

RESOURCE +

OBSTACLE --

CARTOGRAPHY OF FACTORS INFLUENCING CAREGIVERS' EXPERIENCES OF LOSS

THE CAREGIVER

- Age
- Gender
- Personality / character traits
- Emotional reactions
- Connection to the care-receiver
- Mental health
- Physical health
- Life projects
- Problem management
- Capacity to comprehend
- Capacity to express oneself
- Capacity to deal with stress - resilience
- Capacity to ask for help
- Meaning of the illness/death
- Experience with prior caregiving
- Meaning of the caregiving
- Vision of life
- Spirituality
- Other _____

THE CARE-RECEIVER

- Personality / character traits
- Age
- Type of illness
- Length of illness
- Meaning of the illness/death
- Life projects
- Spirituality
- Other _____

CIRCUMSTANCES OF THE DEATH

- Announcement of death
- Place of death
- Presence during the death
- Type of death (ie: medical aid in dying)
- Anticipation of death
- Other _____

THE CAREGIVING RELATIONSHIP

- The nature of the relationship
- The duration of the relationship
- Communication
- Living situation
- Emotional aspects
- Practical support
- Financial support
- Other _____

THE FAMILY

- Recognition of the caregiver role
- Family cohesion/closeness
- Intra-family communication
- Family-health care system communication
- Family adaptability
- Other _____

SOCIAL NETWORK

- Social life
- Assistance from family/friends
- Support from family/friends
- Neighbours
- Rituals
- Religious or spiritual groups
- Other _____

PROFESSIONAL AND FINANCIAL SITUATION

- Employment
- Work schedule
- Colleagues
- Work flexibility
- Financial resources
- Other _____

THE HEALTH CARE SYSTEM

- Experience waiting for a diagnosis
- Length of time waiting for a diagnosis
- Symptom management
- Quality of information given
- Listening quality
- Satisfaction with the care given
- Do not resuscitate orders (DNR)
- Advanced medical directives
- Relationship between the caregiver and the health care team
- Availability of the health care team
- Coherence amongst the health care team
- Possibilities of respite
- Spiritual support offered
- Orientation to external resources
- Post-care follow up
- Psychosocial support
- Home care services
- Other _____

FACTORS OF COMPLICATED GRIEF

- Death of a child
- Violent or brutal death
- Sudden or lengthy death
- Multiple losses of grief
- Personality issues/history of mental health issues
- Social isolation
- Suicide
- Enmeshment
- Other _____

RESOURCE +
OBSTACLE --

Limits and questions

- A static evaluation
- Many questions
 - When to use it ?
 - How to use it ?
 - With the caregiver ?
 - Where to put it ?

Thank you !



The team:

Isabelle Van Pevenage

Pam Orzeck

Zelda Freitas

Patrick Durivage

Claire Van Pevenage

contact: isabelle.van.pevenage@umontreal.ca