

# GERMAN 310

## Library Workshop

---

**Pamela Carson**

**pamela.carson@concordia.ca**

**Web Services Librarian**

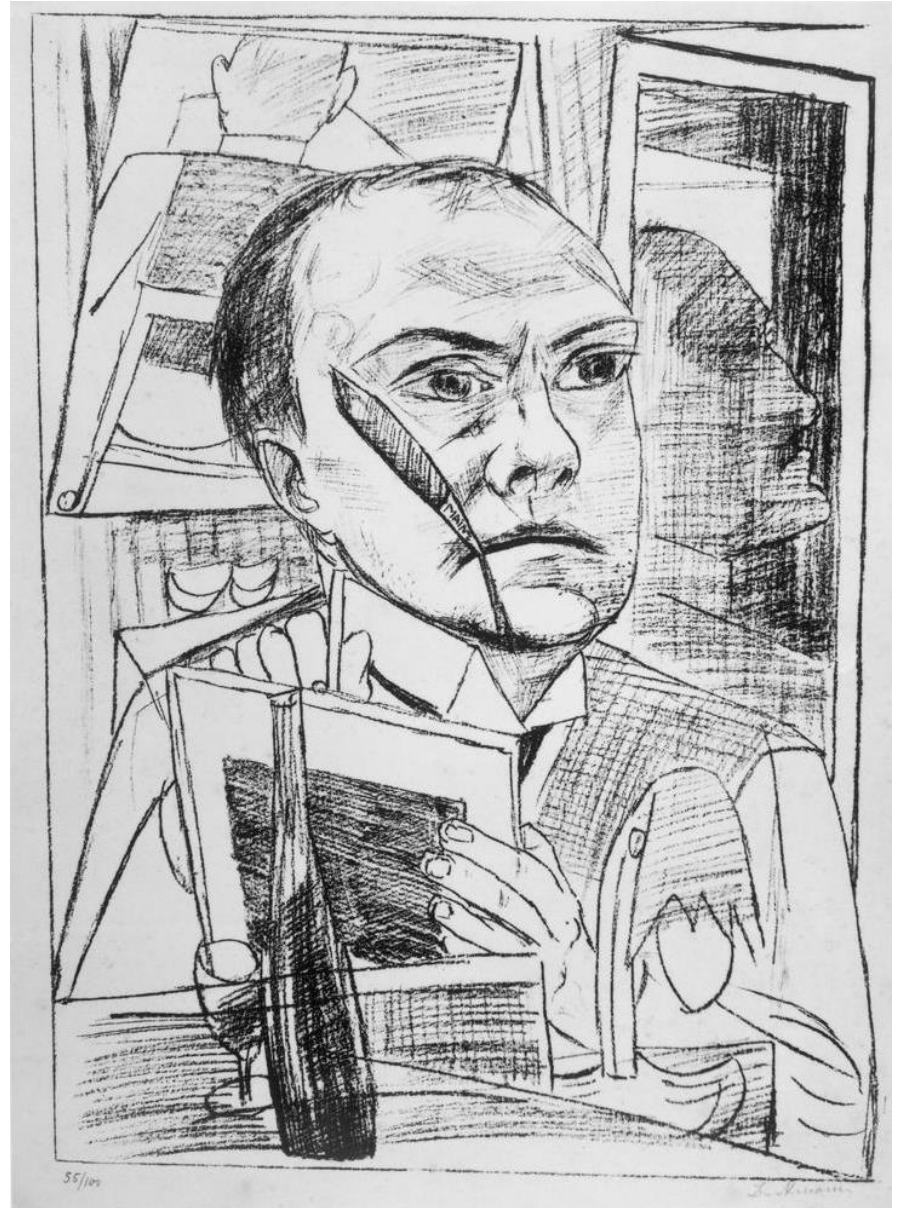


**Selbstbildnis en face, Käthe Kollwitz, 1904 (via ArtStor)**

# Agenda (45 minutes)

- Introduction, brief overview of library services (5 min.)
- How to find journal articles (5 min.)
- *JSTOR* and *Project Muse* demo (15 min.)
- Tips and tricks for MLA citation style (10 min.)
- Questions and feedback (5 min.)

What do you  
currently use  
the library for?



Max Beckmann Self-Portrait in the Hotel, 1922 (via ArtStor)



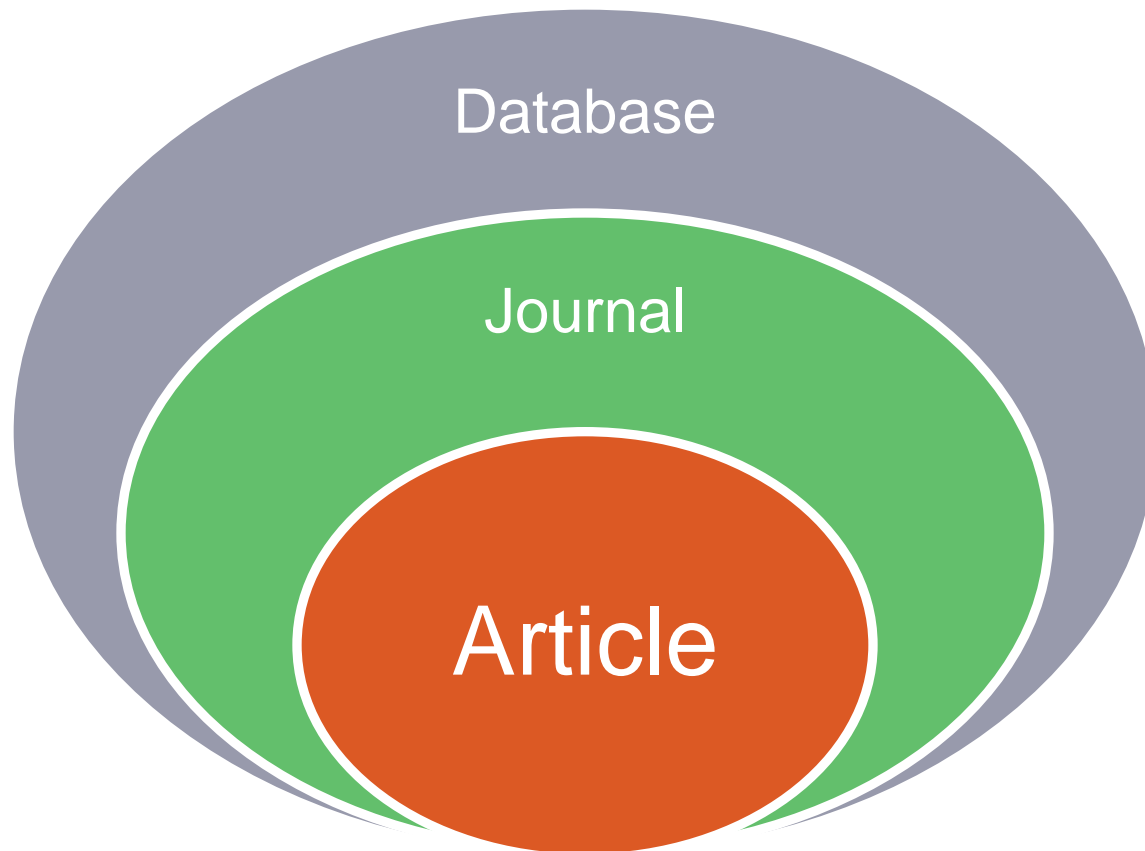
# Quick overview

- German literature books (4<sup>th</sup> floor) PT 1 – PT 5000
- German culture/history (3<sup>rd</sup> floor) DD/DS and others
- CLUES library catalogue
- Workstations
- 2 libraries + Grey Nuns Reading Room





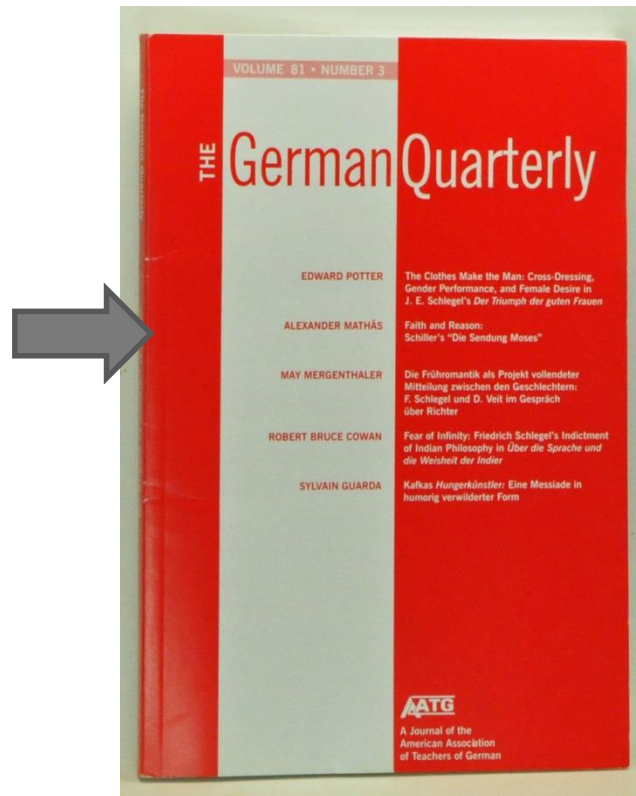
# How to find journal articles



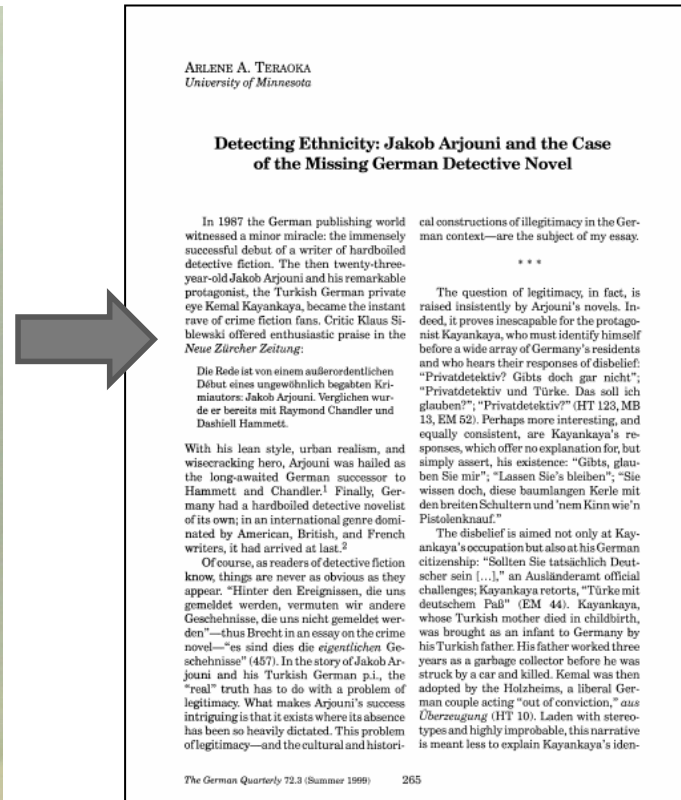




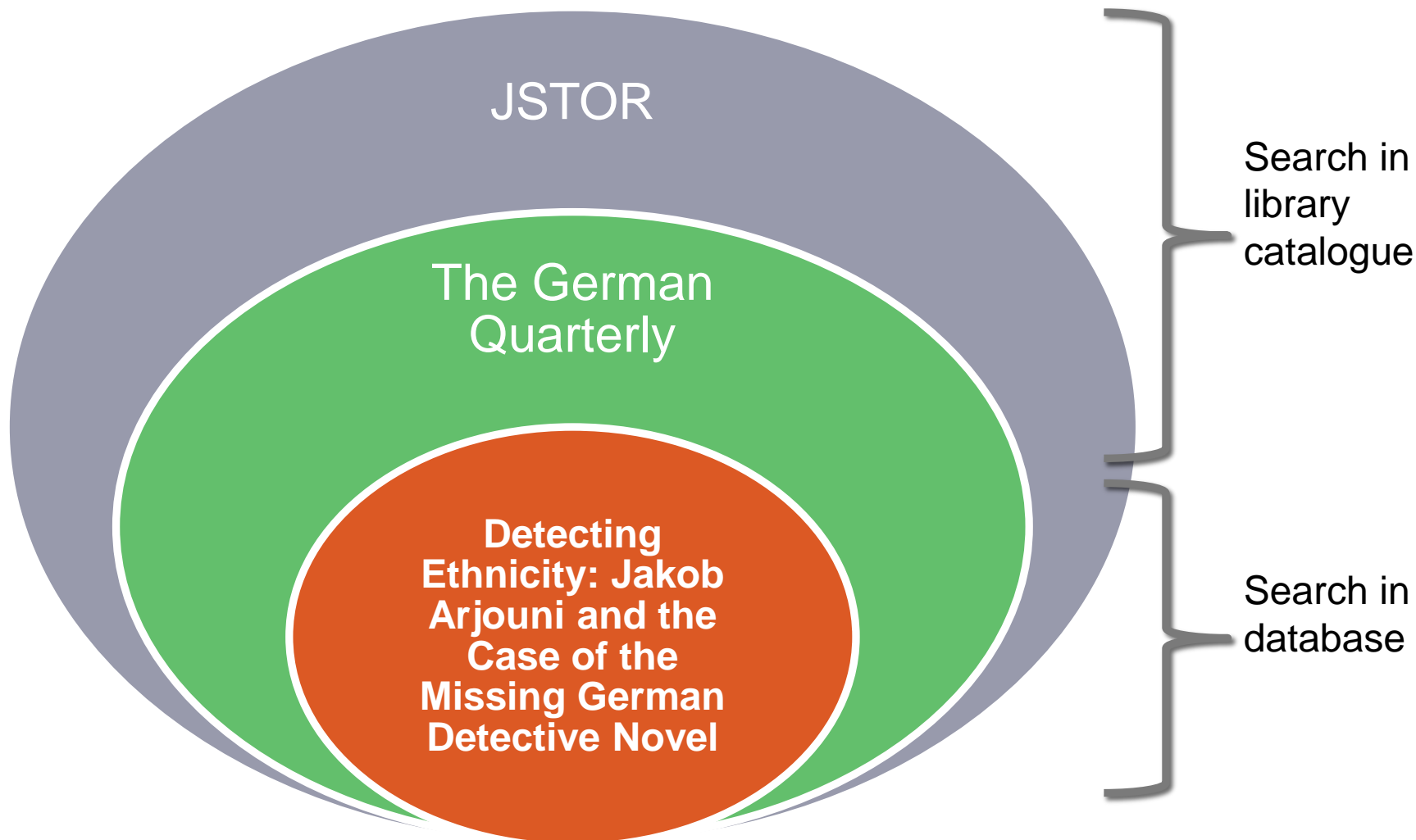
Database



Journal



Article





# How to find an article on a topic

- List your keywords
  - Use concepts only
- Pick a database
- Search
  - Modify search with limits (date range, language, document type)
  - Possibly use subject terms/subject headings/thesaurus
- Tips:
  - Alternate spellings Niebelungen / Nibelungen
  - Related terms: Siegfried, Nibelungenlied, Nieblungs, Kriemhild
  - Don't start too specific – Refine your search to narrow results

# Searching on a topic?

- Go to database with that subject coverage or a *multidisciplinary* **database**

## Recommended databases:

German Literature	German Cinema
<ul style="list-style-type: none"><li>• <i>JSTOR</i></li><li>• <i>Project Muse</i></li><li>• <i>MLAIB</i></li><li>• <i>Francis</i></li><li>• <i>Academic Search Complete</i></li></ul>	<ul style="list-style-type: none"><li>• <i>Communication &amp; Mass Media Complete</i></li><li>• <i>Film &amp; Television Literature Index</i></li><li>• <i>International Index to Performing Arts</i></li><li>• <i>MLAIB</i></li></ul>

# Database demonstration

- Francis
- JSTOR



# Searching for a specific article

- Go to CLUES Library Catalogue and search by **journal title**
- OR Use the Article Finder  
<http://library.concordia.ca/research/articlefinder/>
- OR Configure Google Scholar  
<http://library.concordia.ca/help/howto/googlescholar.php>

Teraoka, Arlene A. "Detecting Ethnicity: Jakob Arjouni and the Case of the Missing German Detective Novel."  
*The German Quarterly* 72.3 (1999): 265-289.

# Helpful hints

- Article delivery
- BCI card
- Interlibrary loan
- Ask a Librarian
- Possible to go to McGill and use computers to access BDSL Online
  - [guest.library@mcgill.ca](mailto:guest.library@mcgill.ca); Password: guest123

# MLA Citations

- Library website > Help > Citation Guides > MLA

The screenshot shows the Concordia University Libraries website. The top navigation bar includes links to MyConcordia, Capase, Webmail, Directories, Hours, A-Z, Maps, and Quick links. Below this is a search bar with a dropdown menu set to 'Catalogue' and a search button. The main content area is titled 'Libraries' and has a sub-header 'MLA citation style'. On the left, there is a sidebar with links to 'Introduction', 'Updates from the new edition', 'Parenthetical references', 'Works cited - General guidelines', and 'Works cited - Examples'. The main content area has a heading 'Introduction' and a paragraph explaining that the guide is based on the 7th edition of the *MLA Handbook for Writers of Research Papers*. It also mentions that the handbook is generally used for academic writing in the humanities. Below this, there is a section titled 'Updates from the new edition' with a list of changes, including the removal of underlining for titles and URLs, and the requirement to use the *MLA Handbook* for more information.



The screenshot shows the Purdue Online Writing Lab (OWL) website. The top navigation bar includes links to Purdue OWL, Writing Lab, OWL News, Engagement, Research, and Contact. Below this is a search bar with a dropdown menu set to 'Research and Citation'. The main content area is titled 'Research and Citation Resources' and has a sub-header 'Conducting Research'. It includes a list of links to various resources, such as 'Research and Citation', 'Conducting Research', 'Using Research', 'APA Style', 'MLA Style', 'Chicago Manual 16th Edition', and 'Giving to the OWL'. The page also features a section titled 'Suggested Resources' with links to 'MLA Guide', 'MLA OWL Mail PAQs', 'APA Guide', 'APA OWL Mail PAQs', 'How to Navigate the New OWL', and 'Media File Index'.



# Tools



- Microsoft Word 2010 and later

## MLA article citation

Teraoka, Arlene A. "Detecting Ethnicity: Jakob Arjouni and the Case of the Missing German Detective Novel." *The German Quarterly* 72.3 (1999): 265-289. *JSTOR*. Web. 30 Jan. 2014.

# Paraphrasing

- According to Postman, broadcast news influences the decision-making process (51-63).

OR

- Broadcast news influences the decision-making process (Postman 51-63).



# Direct quotation

In response to rapid metropolitan expansion, urban renewal projects sought "an order in which more significant kinds of conflict, more complex and intellectually stimulating kinds of disharmony, may take place" (Mumford 485).

# MLA quick tips

- A citation always has 2 parts: the in-text citation after the paraphrased section or direct quotation and the work cited in the references at the end of the paper
- Both direct quotations and paraphrased text need to be attributed
- Check your punctuation, indentation, spacing and italicization
- Check the author's name format (is it a middle name or a last name?)

# More MLA quick tips


- Use the first publisher location (New York, London, Paris)
- Make sure your Works Cited list is in alphabetical order by authors' last names
- For a 2<sup>nd</sup> work by same author, use “---.”
- Consult examples for citing websites, course packs, and multimedia

Questions?

Comments?

# Danke!

- For further assistance
  - Ask any librarian
    - In person
    - Chat
    - E-mail
    - Phone
  - Contact me
    - Pamela Carson
    - [pamela.carson@concordia.ca](mailto:pamela.carson@concordia.ca) (preferred)
    - 514-848-2424 ext. 7685
    - Office hours by appointment



Please fill out the  
feedback form