

Structure of the Major in Supply Chain Operations Management

SCOM Major Requirements (24 credits / 8 courses)

- **Required Courses (21 credits):**
 - SCOM 361, 363, 372, 374, 492, 498, and BSTA 450.
- **Electives (3 credits):** Select one course from:
 - BTM 382, 430, 480, SCOM 490 or 491.

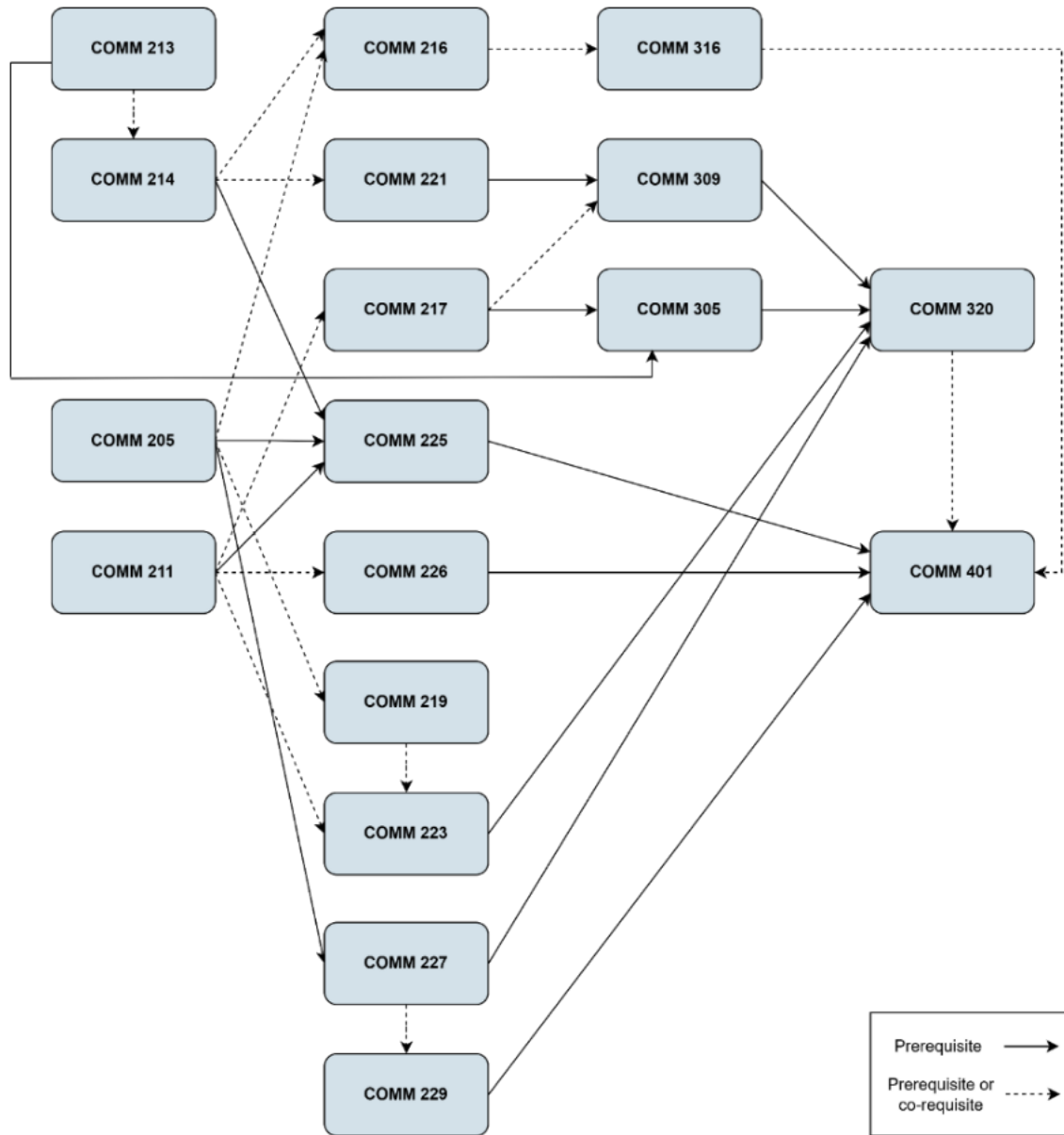
	COURSE	TITLE	CREDIT	PREREQUISITE	CO-REQUISITE	NOTES
Core Courses	COMM 205	Business Communications	3		ECON 203	
	COMM 211	Global Business Environment	3		ECON 201, 203	
	COMM 213	Computing and Visualization Tools for Business Analytics	1.5		ECON 201	
	COMM 214	Business Analytics	3	MATH 208, 209	COMM 213	
	COMM 216	Ethics, Business Sustainability, and Social Responsibility	1.5		COMM 205, 214	
	COMM 217	Financial Accounting	3		COMM 211	
	COMM 219	Innovation Marketing	1.5		COMM 205	
	COMM 221	Financial Markets	3	ECON 201	ECON 203, COMM 214	
	COMM 223	Marketing Management	3		COMM 211, 219	
	COMM 225	Production and Operations Management	3	COMM 205, 211, 214		
	COMM 226	Business Technology Management	3		COMM 211	
	COMM 227	Interpersonal and Critical Thinking Skills	3	COMM 205		
	COMM 229	Managing People in Organizations	3		COMM 227	
	COMM 305	Managerial Accounting	3	(COMM 213 or 215), COMM 217		
	COMM 309	Business Finance	3	COMM 221	COMM 217	
	COMM 316	Business Law and Ethics	1.5		COMM 216	
COMM 320	Entrepreneurship	3	COMM 223, 227, COMM 305, 309			
COMM 401	Strategic Management	3	COMM 225, 226, 229 and 45 business credits	COMM 316, 320		
Required Courses	SCOM 361	Management Science Models for Operations Management	3	COMM 225		
	SCOM 363	Product Design and Business Process Re-Engineering	3		COMM 225	
	SCOM 372	Supply Chain Planning and Control	3	SCOM 361		
	SCOM 374	Supply Chain Logistics	3	COMM 225		
	SCOM 492	Supply Chain Simulation	3	9 credits of SCOM courses		
	SCOM 498	Supply Chain Project	3		SCOM 492 and 12 credits of SCOM courses	
	BANA 450	Statistical Models for Data Analysis	3	COMM 214		
	BTM 382	Database Management	3	COMM 226		

	COURSE	TITLE	CREDIT	PREREQUISITE	CO-REQUISITE	NOTES
Elective Options	BTM 430	Enterprise Resource Planning and Information Technology Integration	3	COMM 225, 226		
	BTM 480	Project Management		COMM 225 or 226		
	SCOM 490	Special Topics in Supply Chain Operations Management	3			Permission from Department
	SCOM 491	Supply Chain Risk Management	3	COMM 225		

Important Information

1. **Prerequisites:** A prerequisite must be completed before taking the next course. Example: COMM 225 → SCOM 361.
2. **Co-requisites:** Courses that can be taken in the same term. Example: COMM 225 & SCOM 363.
3. **Student Responsibility:** Students must follow the correct course sequence and retake failed courses before progressing.
4. **Curriculum Reference:** Check the [undergraduate calendar](#) or degree worksheet for your year of entry.
5. **Minor Option Includes:**
 - Minor in Supply Chain Operations Management: SCOM 361, 363, 372 and 374.

Flowchart for JMSB Core Courses



Flowchart for Supply Chain Operations Management Major

