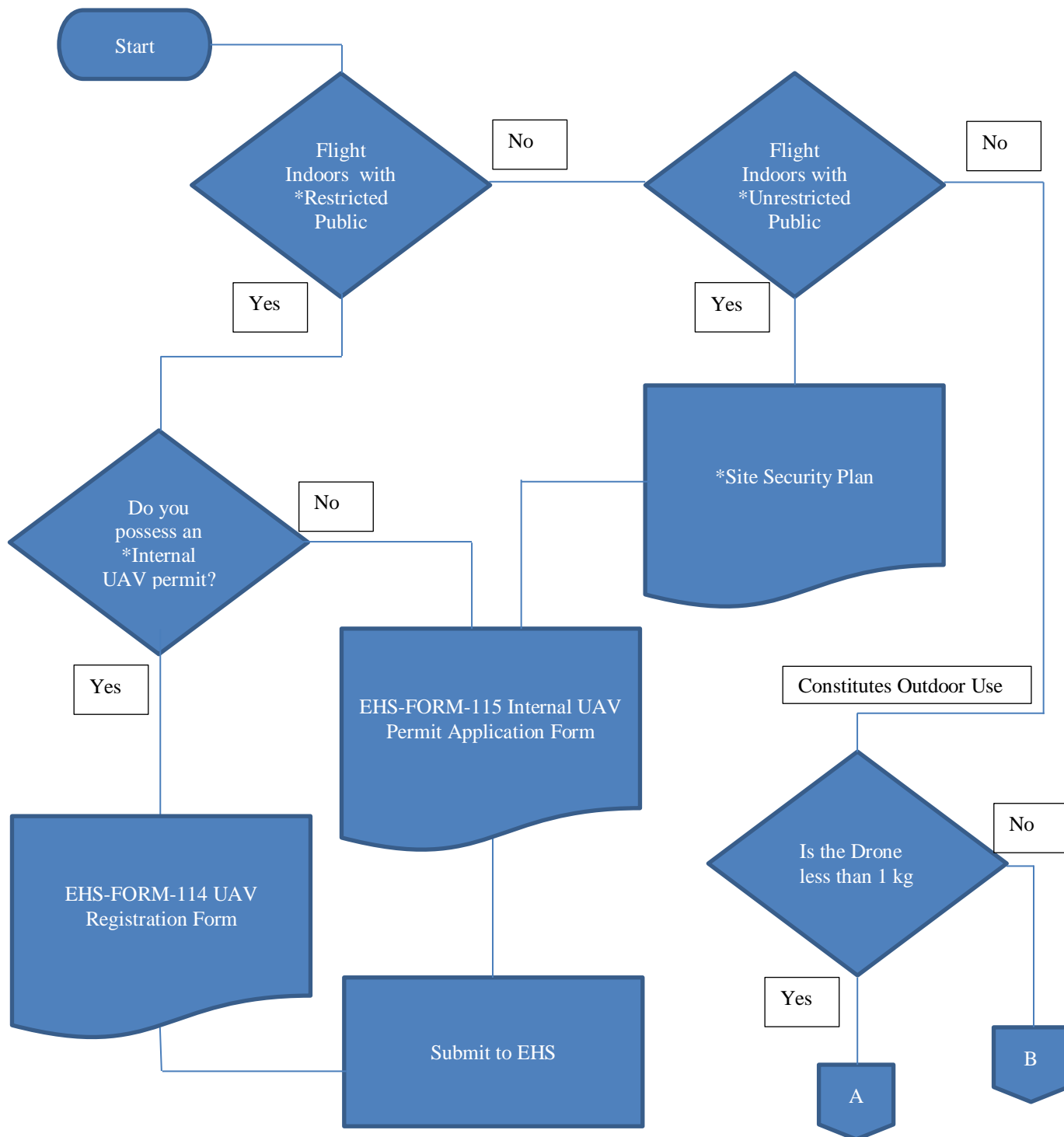
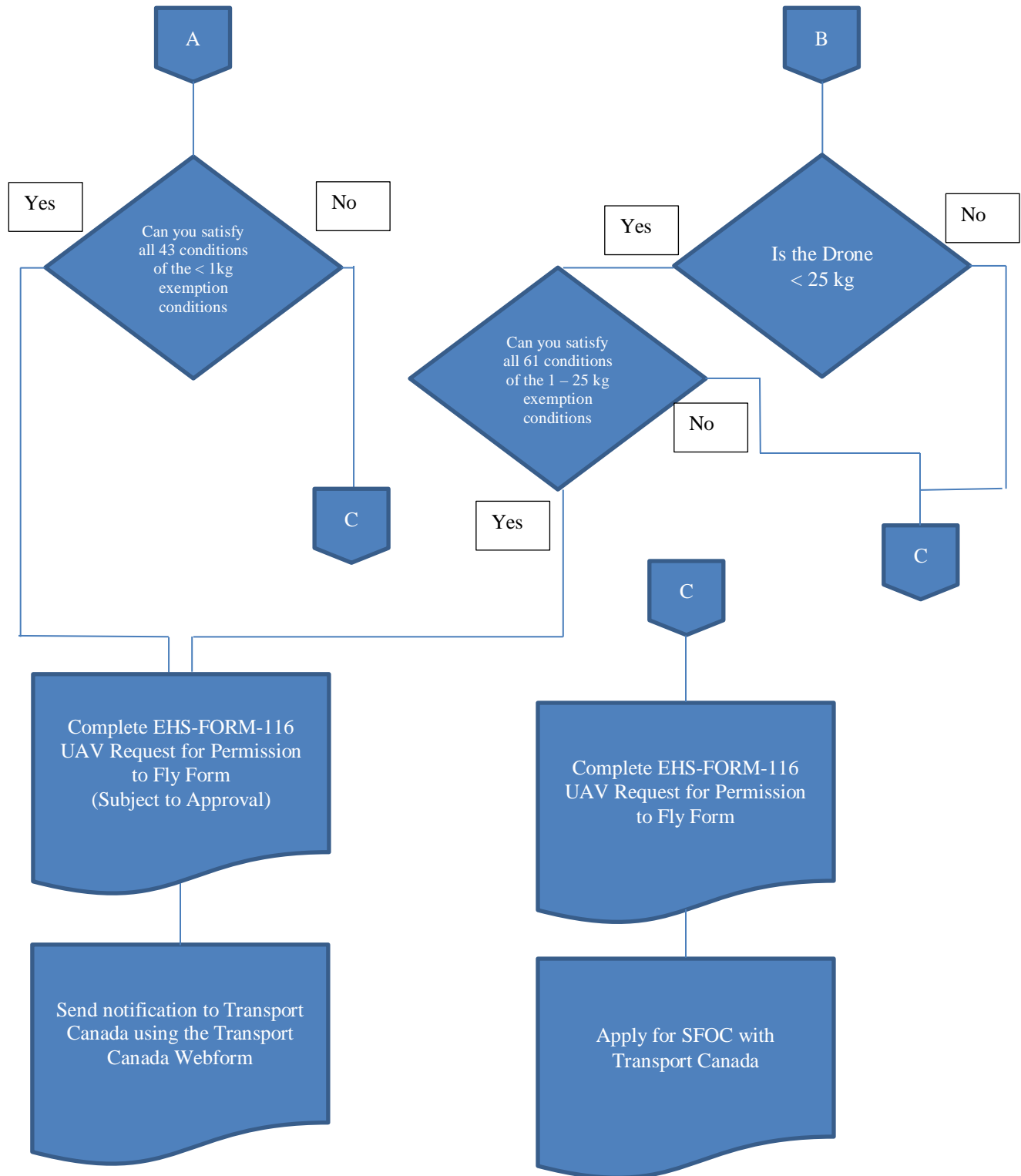


UAV Decision Tree

Use this decision tree to determine which documents are required to fly your UAV (drone or model aircraft). The Transport Canada Exemptions for 'UAV < 250 gram' or 'recreational use' cannot be satisfied on University premises for either campus without permission from Concordia University. For additional details, contact EHS at 514-848-2424 ext. 4877 or at ehs@concordia.ca.





Definitions:

Internal UAV Permit

The internal permit issued by EHS that permits indoor flight operations on university premises.

Restricted Access

An area that has engineered access controls, e.g. lockable doors, that will enable physical control of the space and enable limiting access to the space to the personnel designated to be in the area during flight operations. Examples include a laboratory designated for UAV work or a flight test cage dedicated for UAV flight testing.

Site Security Plan

A document that indicates the intended area of operation, the access points to the space, the emergency exits, and the position of barriers or additional personnel that will monitor the space. The purpose is to prevent members of the public from entering the space unaware of the operations taking place.

Unrestricted Access

An area that may be open to the public or whose access is not able to be controlled fully with engineered controls. Examples include corridors, building atria, gymnasiums or the Concordia Dome. In such spaces, additional access controls are required which will likely include personnel to monitor the access ways into the space, or where the entire space is not dedicated to the flight activity, this may include physical delineation of flight test space and monitoring by personnel.