

S H T F T  
centre for  
social transformation  
CONCORDIA

# WELCOME

## ABOUT D.I.F.

Fund Creation

Objectives

## APPLICATION PROCESS

Timeline

General Selection Criteria

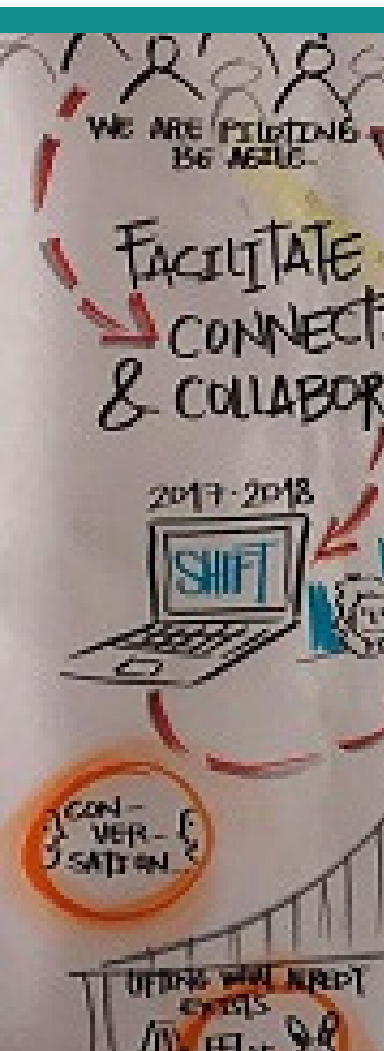
Deep Investment Criteria

Financials & Funding

## QUESTIONS



# AGENDA

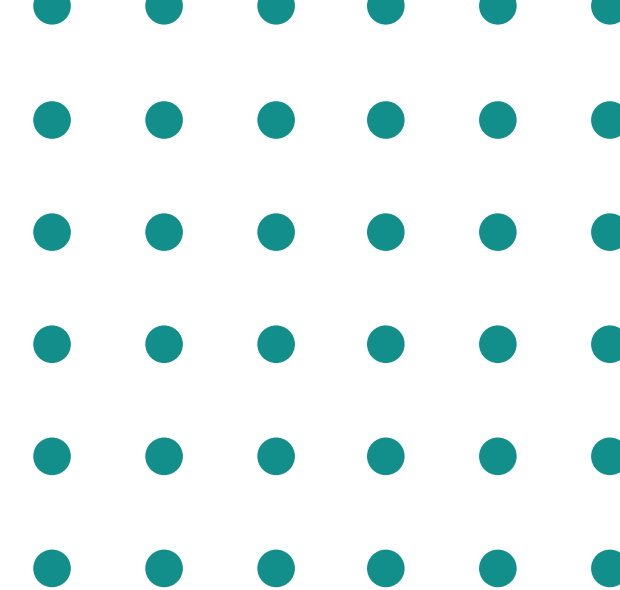


A decorative grid of teal dots arranged in 7 columns and 15 rows, located on the left side of the slide.

# ABOUT THE DEEP INVESTMENT FUND



# WHY THIS FUND WAS CREATED

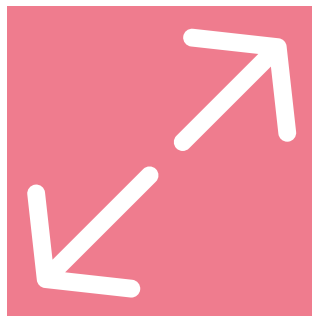


- Following SHIFT's overall Year 4 Strategy
- Anchoring in our mission to be a bridge between the community and Concordia
- Supporting the expertise and potential of our Learning Community partners to increase their impact
- Emphasizing quality of relationships over quantity

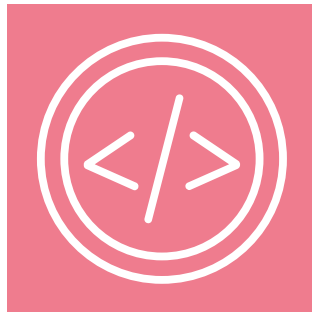


# DEEP INVESTMENT FUND: OBJECTIVES

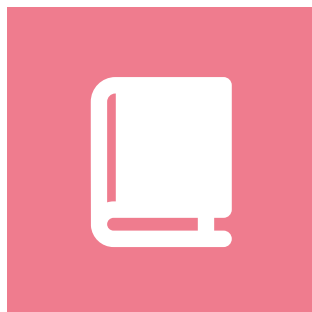
Investing more deeply and working more closely together to leverage Concordia/SHIFT connection to support sustainability and growth.



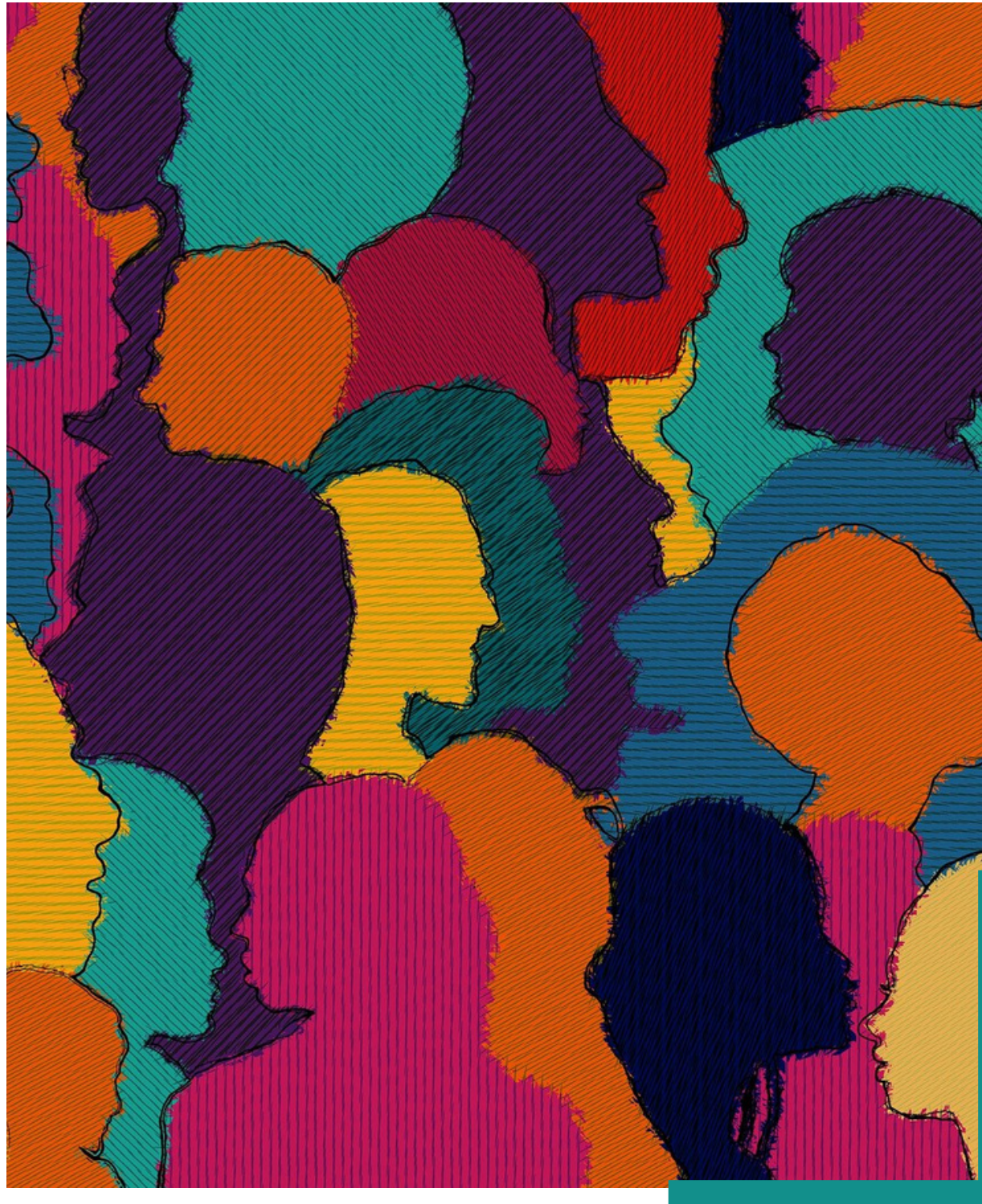
**EXPAND** on previous project



**EMBED** into institutions and systems



**SHARE** your expertise







# PROJECT ELIGIBILITY\*



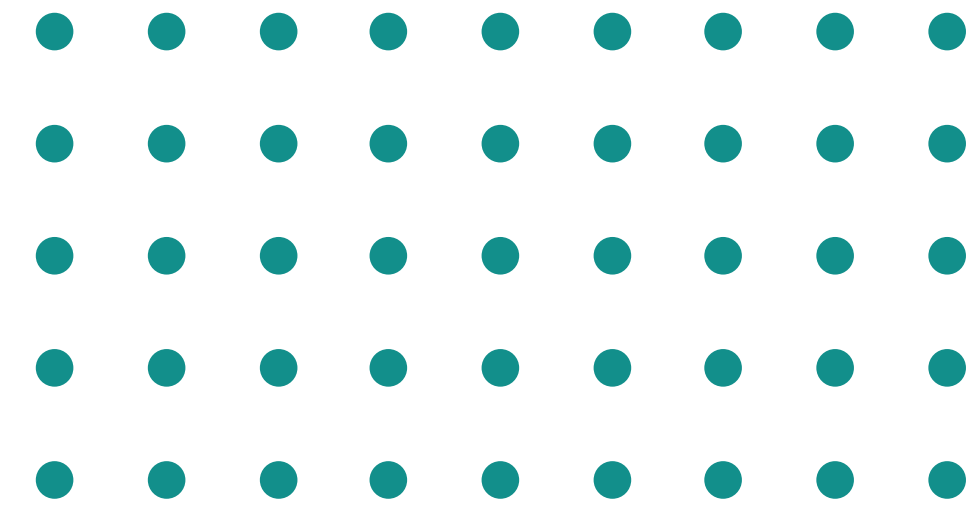
- ✓ **YOU HAVE COMPLETED (OR NEARLY COMPLETED) YOUR PREVIOUS SHIFT PROJECT**
- ✓ **YOU ARE MEANINGFULLY CONNECTED TO CONCORDIA**
- ✓ **YOUR PROJECT HAS A CLEAR TIMELINE: BEGINNING › END**
- ✓ **YOU ARE MEANINGFULLY CONNECTED TO THE COMMUNITY AFFECTED BY YOUR WORK**



# APPLICATION PROCESS



# TIMELINE: FALL 2022



**1**

## INFO SESSION

You're already here!

**2**

**OCTOBER 11 – 17**

## PRE-PROPOSAL MEETING

**Mandatory:** meet with SHIFT staff to discuss your project proposal

**3**

**OCTOBER 18 – NOVEMBER 18**

## APPLICATION DEVELOPMENT

**Encouraged:** Continue co-developing proposal with SHIFT staff

**4**

**NOVEMBER 20**

## SUBMIT APPLICATION

Send in your application and budget

**5**

**MID-JANUARY 2023**

## MEET WITH JURY

Interviews with jury to dig deeper into your project

**6**

**END OF JANUARY 2023**

## RECEIVE YOUR RESPONSE



#### Step 4: Submit your application by Sunday, November 20, 2022

There is no required format for applications. Teams can apply using a traditional write-up (form style replies to the prompts listed below). SHIFT also welcomes applications in other formats created by project teams to align with their strengths, including video, audio, or slideshow.

- Email your application to [shift@concordia.ca](mailto:shift@concordia.ca).

##### Some guidelines

Successful applications of all styles will respond to the following areas, with prompts underneath to guide you in answering:

- **General Project Description** (500 words)
  - What social issue(s) are you working to change? What are the activities of your project: are you working to embed, formalize, or expand? What are the outcomes of your project you are working towards and your deliverables? What are you bringing from your previous project, and what do you want to change?
- **Connections** (300 words)
  - Who are you currently working with? Which individuals, groups, or departments do you want to connect with, why and how? Whom do you want to deepen pre-existing relationships with?
- **Research & Learning** (200 words)
  - What knowledge does your team hold already, or has cultivated through running your project? What can you share with and teach others, and how would you do it?
- **Training & Support** (200 words)
  - What roadblocks do you want support in deconstructing? What do you want to learn in order to develop capacity and sustainability?
- **Space** (100 words)
  - How do you intend to engage with the new SHIFT space?
- **Funding** (100 words)
  - How do you intend to spread the funding from SHIFT between operations and project costs? You can [use your own budget document](#), or use this budget template (includes standard categories and automatic equations). SHIFT does not require much detail, but rather broad categories of expenses.

- 
- ☑ Clarity
  - ☑ Potential for social transformation
  - ☑ Real-world impact
  - ☑ Community connection
  - ☑ Feasibility
  - ☑ Multi-disciplinary & multi-stakeholder
  - ☑ Concordia Connection



# GENERAL SELECTION CRITERIA



## Growth & Learnings

Learnings from previously-funded work have been clearly identified and are informing the current application



## Specificity

Institutions and/or systems have been specifically identified, with strategies for sharing, expanding, or embedding



## SHIFT Co-Development

Strategies for leveraging their relationship with SHIFT are spelled out clearly, through multiple and varied avenues



## Deep Investment Pillars

your project clearly outlines at least two **Deep Investment Pillars** it will be working in



# DEEP INVESTMENT SELECTION CRITERIA



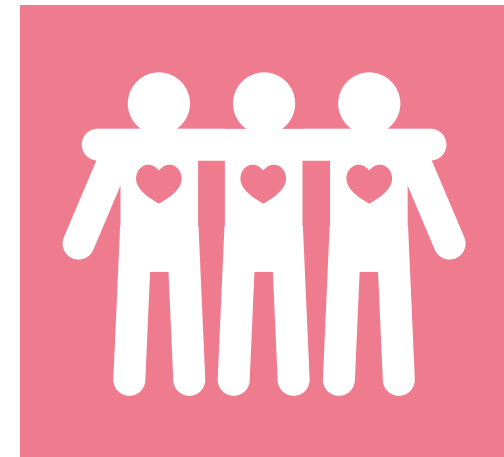
# ELIGIBILITY: DEEP INVESTMENT PILLARS



**CONCORDIA  
CONNECTION**



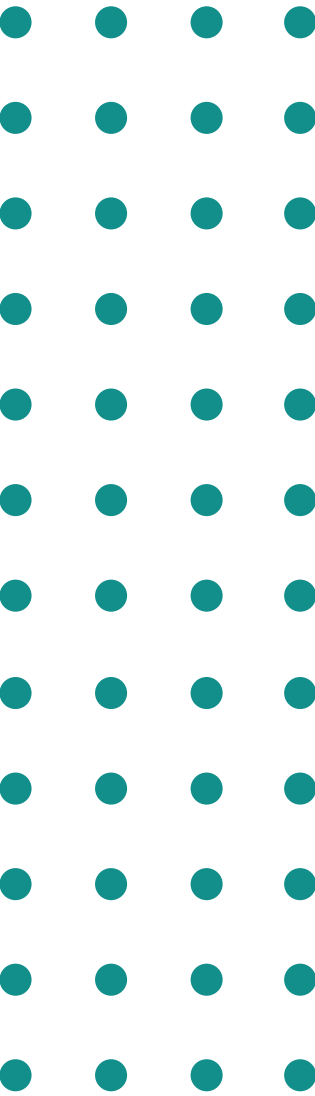
**RESEARCH  
& LEARNING**



**TRAINING  
& SUPPORT**



**SPACE**







## You can apply for **ANY AMOUNT** up to \$50,000/year

- Teams are encouraged to apply for the specific amount needed, and outline that in their budgets
- 30% Core Costs: specific lines are not mandatory

## You can apply for **one OR two** years of funding

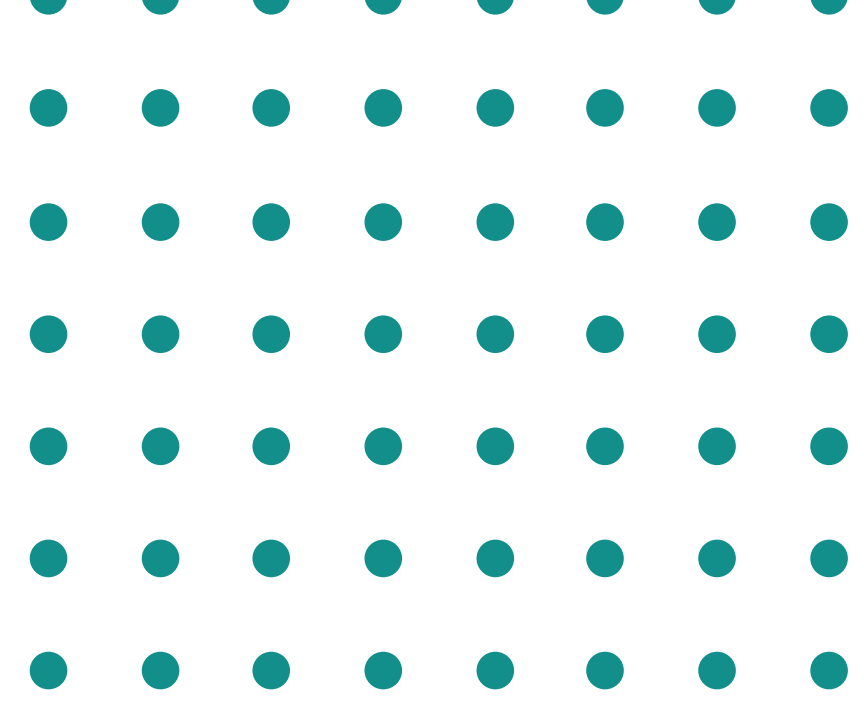
- We understand that two-year budgets can change (and that this work takes time!), but encourage as much clarity and planning as possible

## Funding allocation decisions

- Jury has an active role in funding allocation
- They will be deciding whether to give one or two year commitments
- Based on holistic review of selection criteria



# FINANCES & FUNDING



# Questions?

- **website:** <https://bit.ly/3V5RCj9>
- **email:** [richenda.grazette@concordia.ca](mailto:richenda.grazette@concordia.ca)
- **online meeting:** <https://bit.ly/3SF1UoU>



S H T F T  
centre for  
social transformation  
CONCORDIA