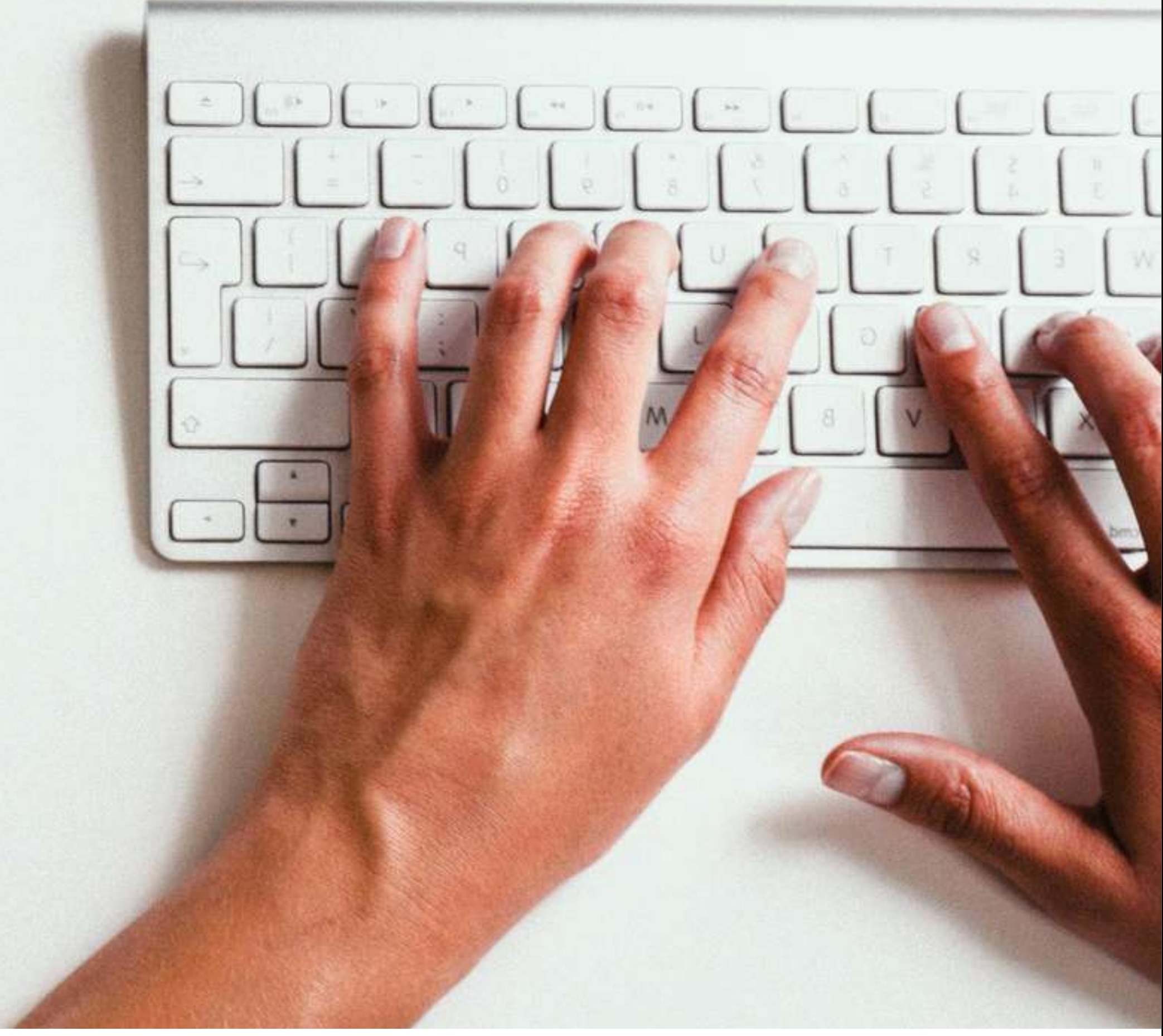


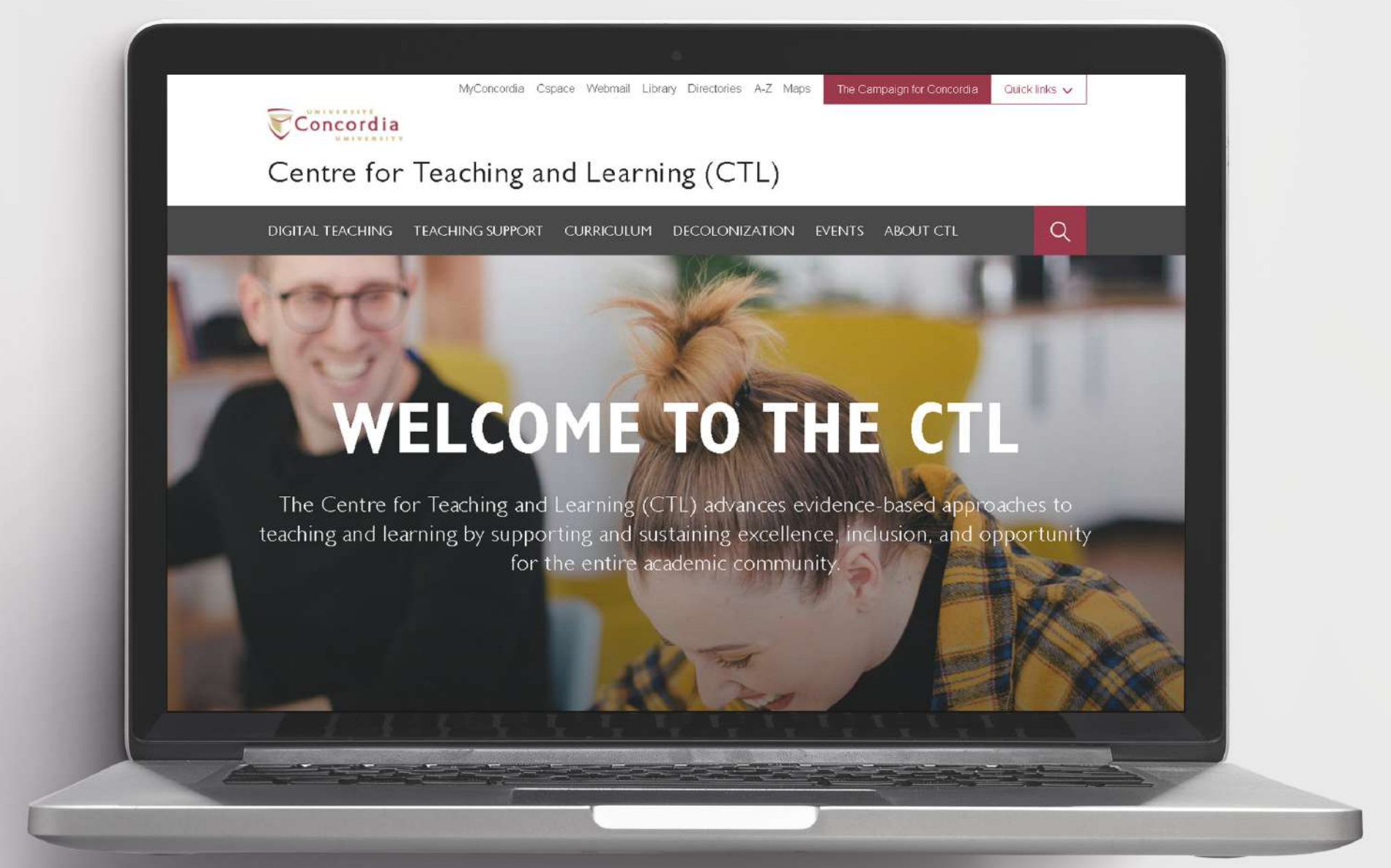
CENTRE FOR TEACHING AND LEARNING

The Centre for Teaching and Learning (CTL) advances evidence-based approaches to teaching and learning by supporting and sustaining excellence, inclusion, and opportunity for the entire academic community.



Resources for Teaching Assistants

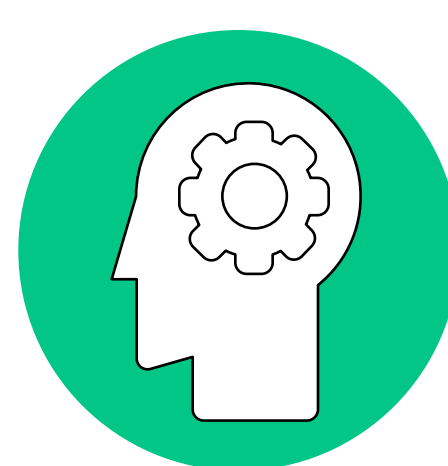
To support you as you get established in your teaching at Concordia, the CTL has compiled a list of links to practical resources to help you with all of your instructional needs.



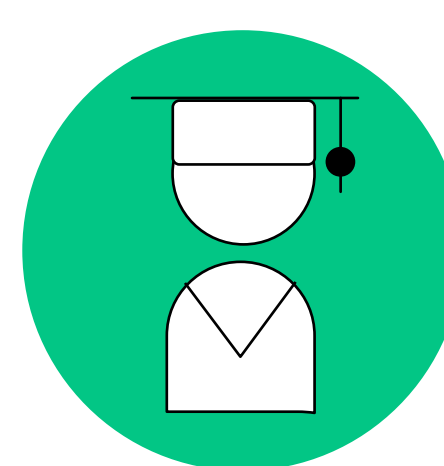
For information about *teaching online*



For resources to help you *design your course*



To augment your classes with *active learning techniques*



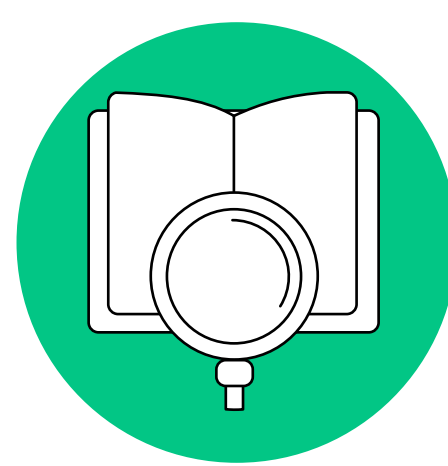
For resources to help you plan and gather *informal feedback from your students*



To find help with *preparing your syllabus*



To arrange for an *individual consultation* related to any aspect of your course or teaching



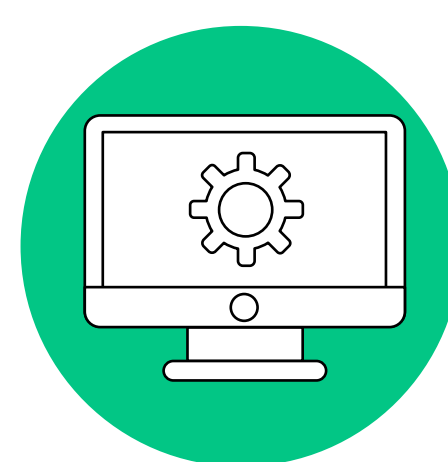
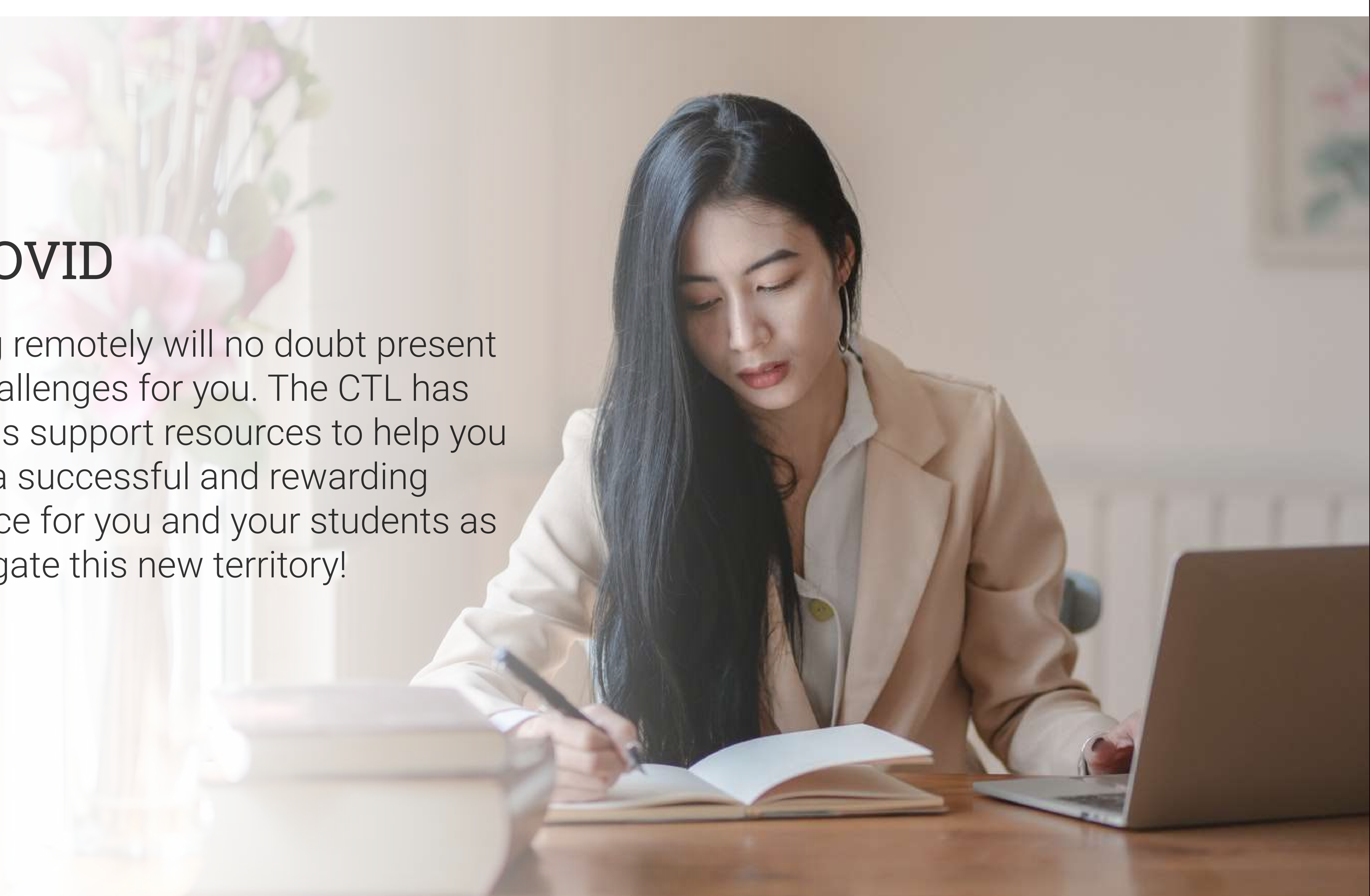
For assistance with *decolonizing your course content or teaching practices*



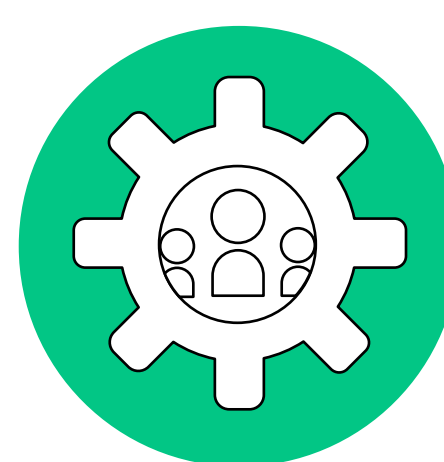
For information about *course evaluations* (login to Cspace required)

For COVID

Teaching remotely will no doubt present some challenges for you. The CTL has numerous support resources to help you plan for a successful and rewarding experience for you and your students as you navigate this new territory!



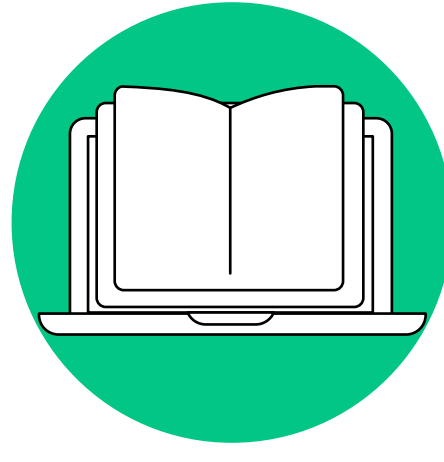
To learn about the technical and logistical *requirements for teaching remotely*



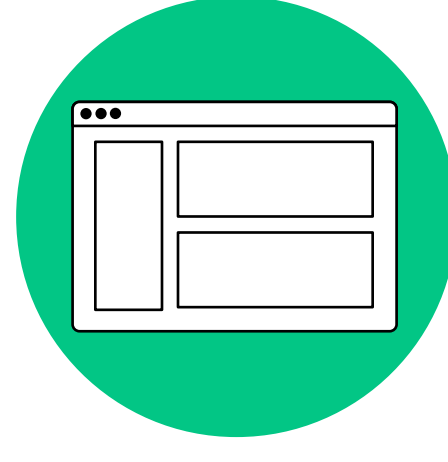
To sign up for training with *GradProSkills*



To examine your *readiness to teach online*



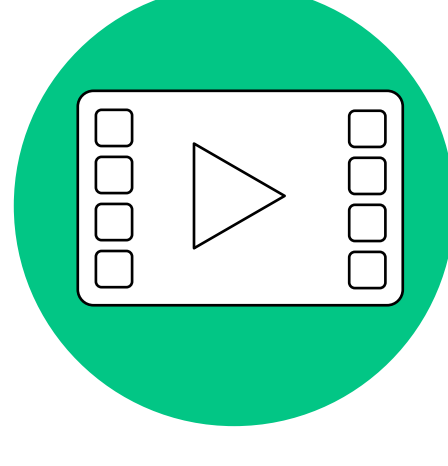
For an overview of *how to plan your online course* (with *slides*)



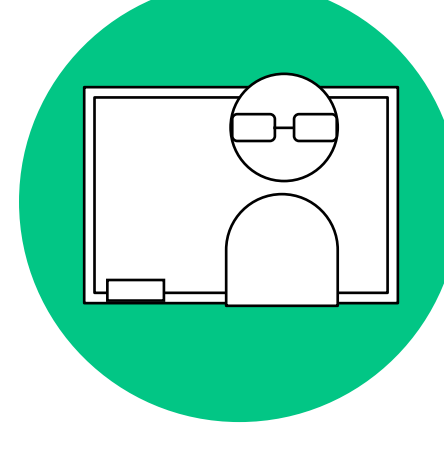
To explore all of the *teaching possibilities with Moodle*



To better understand the distinction between *synchronous and asynchronous learning*



To help you select *the best mode of course delivery*



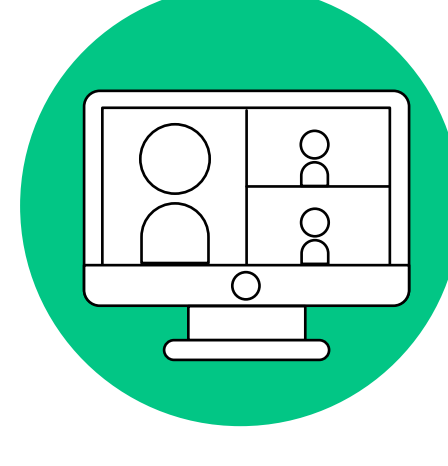
For a comparison of the *instructional design principles* in face-to-face and online courses



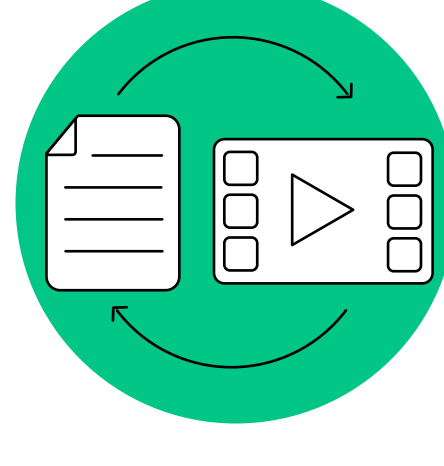
For *online assessment planning*



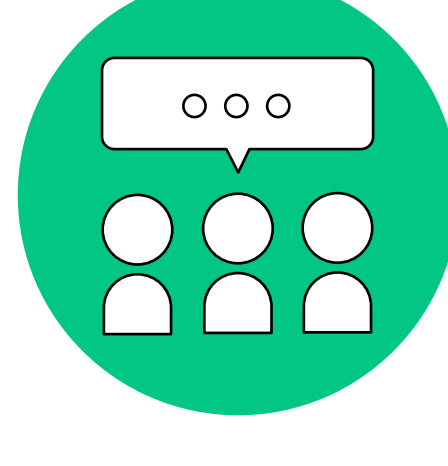
For guidance on *planning your online course modules and designing online course activities*



For support with planning your *synchronous & asynchronous course time and student workload*



To view a range of *hybrid course models*



To ensure an *engaging online course* and develop a *teacher, social and cognitive presence in your online course*



To ensure you adhere to Concordia policy on *using third-party sources*

Reach out!

If you require further assistance or guidance, do not hesitate to contact the CTL at teaching@concordia.ca