

## Centre for Teaching and Learning

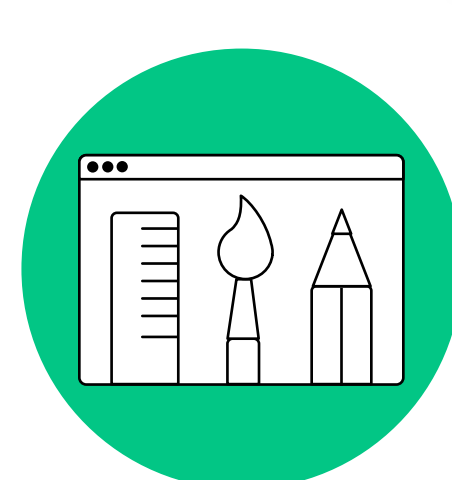
The Centre for Teaching and Learning (CTL) advances evidence-based approaches to teaching and learning by supporting and sustaining excellence, inclusion, and opportunity for the entire academic community.

### Establishing Your Teaching

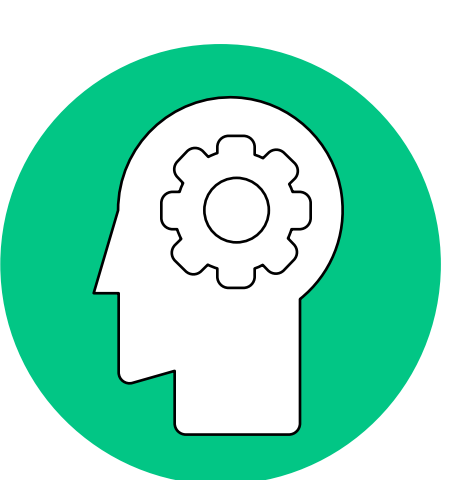
To support you as you get established in your teaching at Concordia, the CTL has compiled a list of links to practical resources to help you with all of your instructional needs.



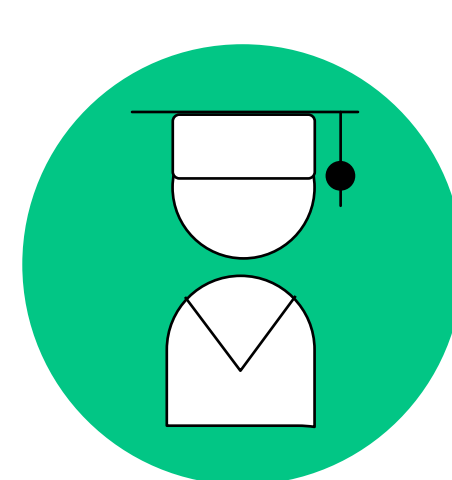
For information about *teaching online*



For resources to help you *design your course*



To augment your classes with *active learning techniques*



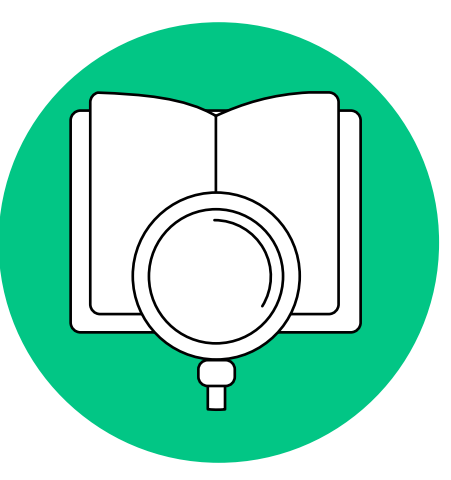
For resources to help you plan and gather *informal feedback from your students*



To find help with *preparing your syllabus*



To arrange for an *individual consultation* related to any aspect of your course or teaching



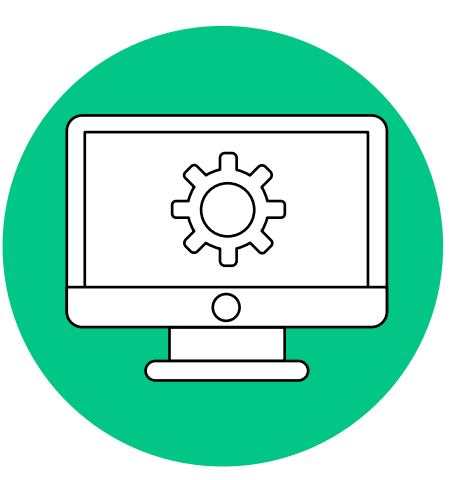
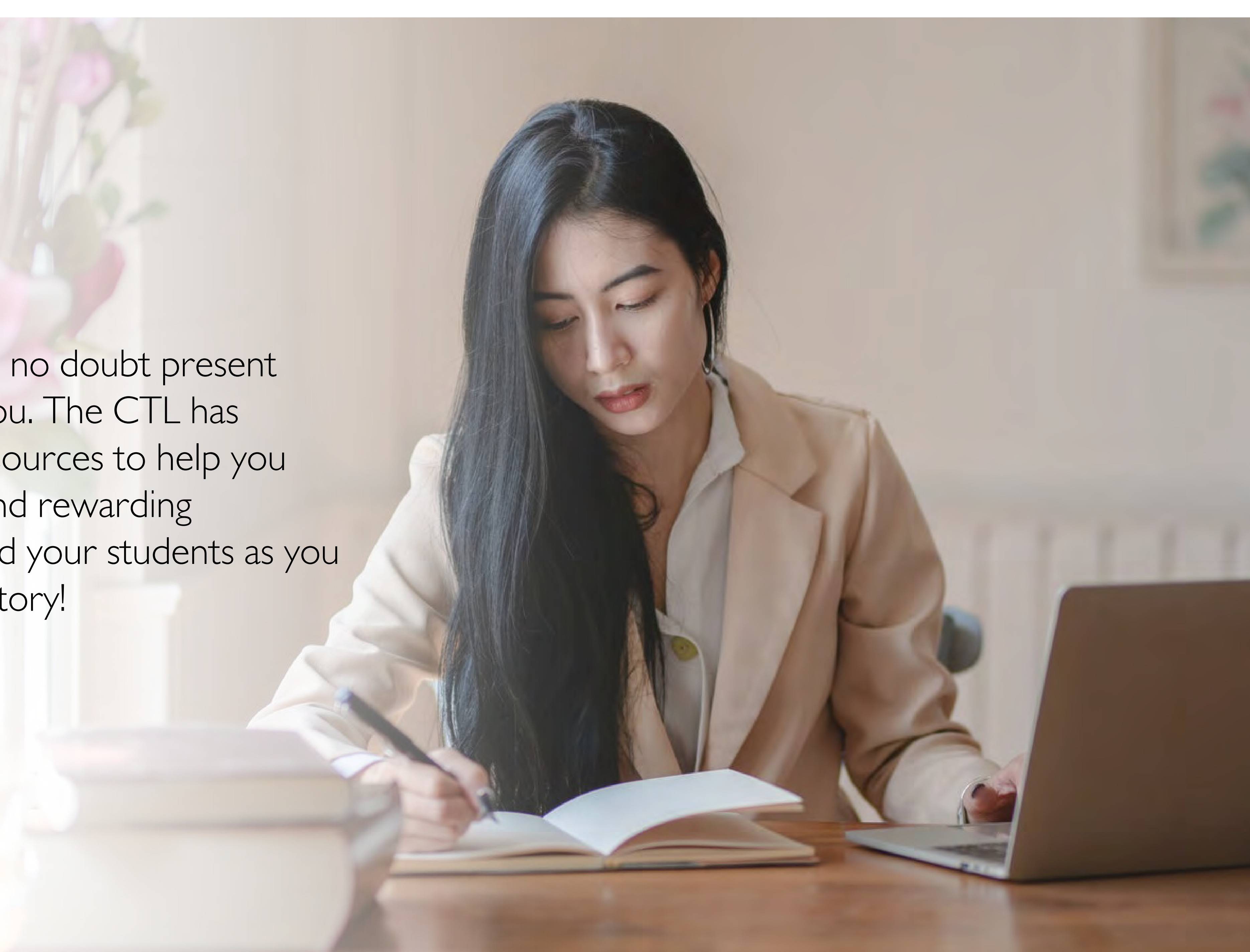
For assistance with *decolonizing your course content or teaching practices*



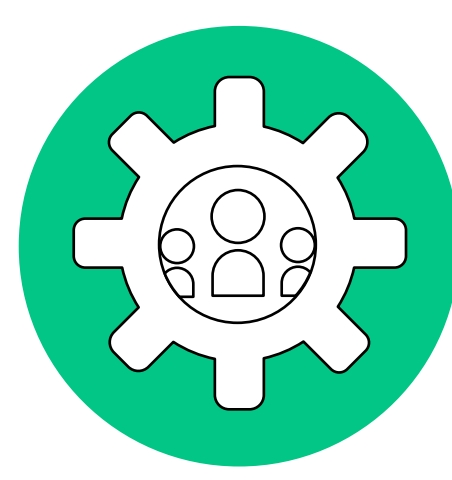
For information about *course evaluations* (login to Cspace required)

### For COVID

Teaching remotely will no doubt present some challenges for you. The CTL has numerous support resources to help you plan for a successful and rewarding experience for you and your students as you navigate this new territory!



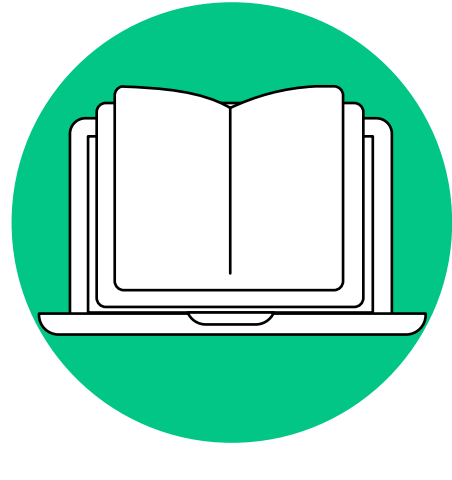
To learn about the technical and logistical *requirements for moving your teaching online*



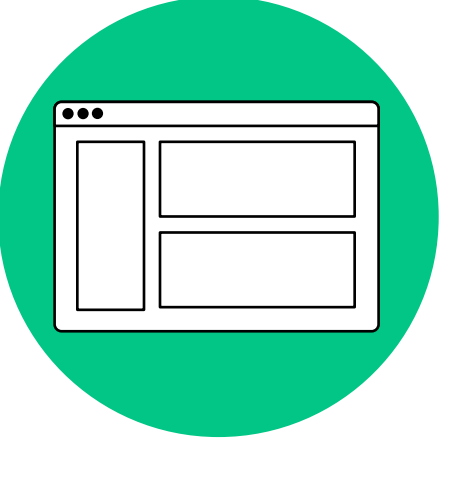
To sign up for training with *IITS* and the *CTL*



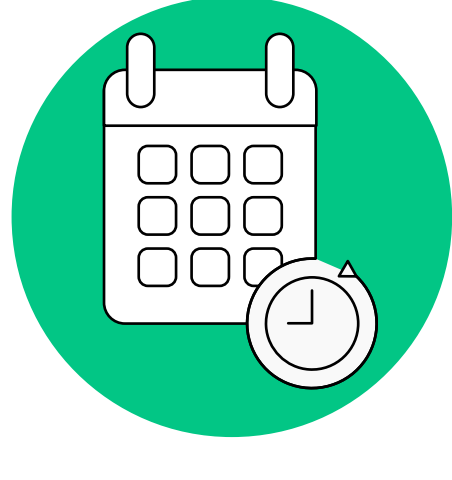
To examine your *readiness to teach online*



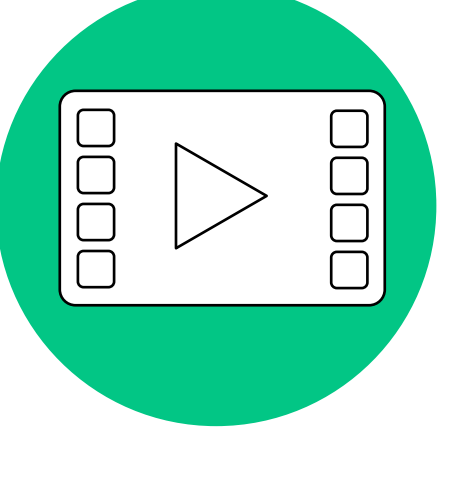
For an overview of *how to plan your online course* (with slides)



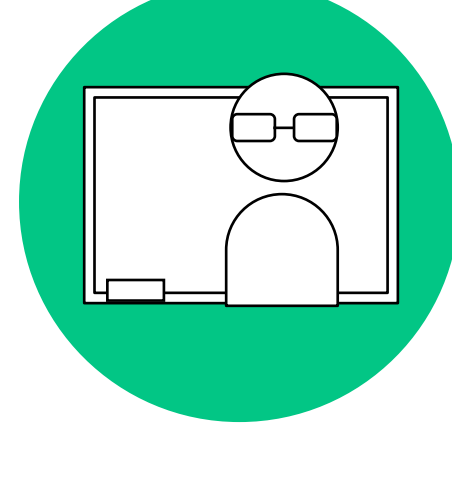
To explore all of the *teaching possibilities with Moodle*



To better understand the distinction between *synchronous and asynchronous learning*



To help you select *the best mode of course delivery*



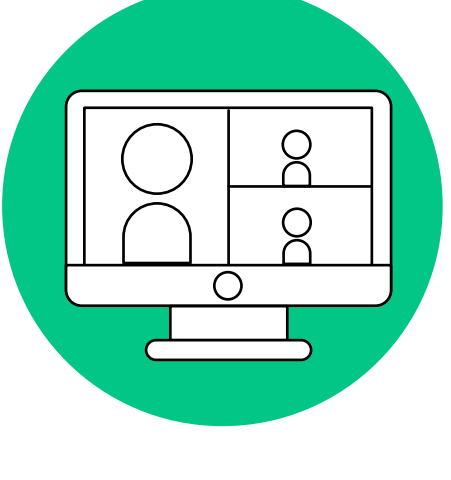
For a comparison of the *instructional design principles* in face-to-face and online courses



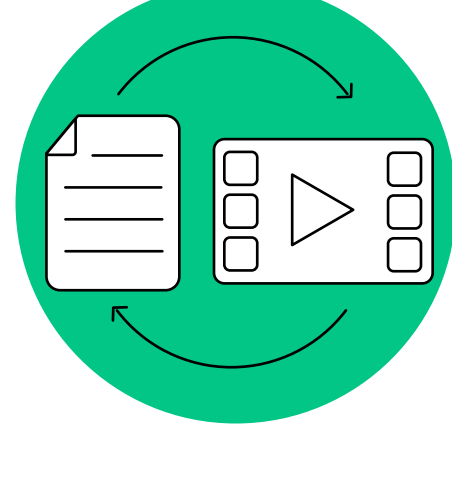
For *online assessment planning*



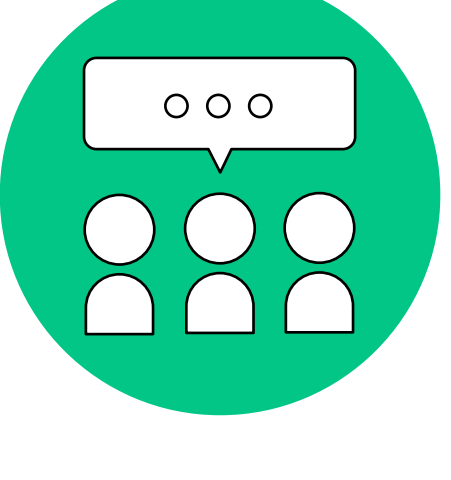
For guidance on *planning your online course modules* and *designing online course activities*



For support with planning your *synchronous & asynchronous course time and student workload*



To view a range of *hybrid course models*



To ensure an *engaging online course* and develop a *teacher, social and cognitive presence in your online course*



To ensure you adhere to Concordia policy on *using third-party sources*

### Reach out!

If you require further assistance or guidance, do not hesitate to contact the CTL at [teaching@concordia.ca](mailto:teaching@concordia.ca)