

The New Rural Economy: Options and Choices

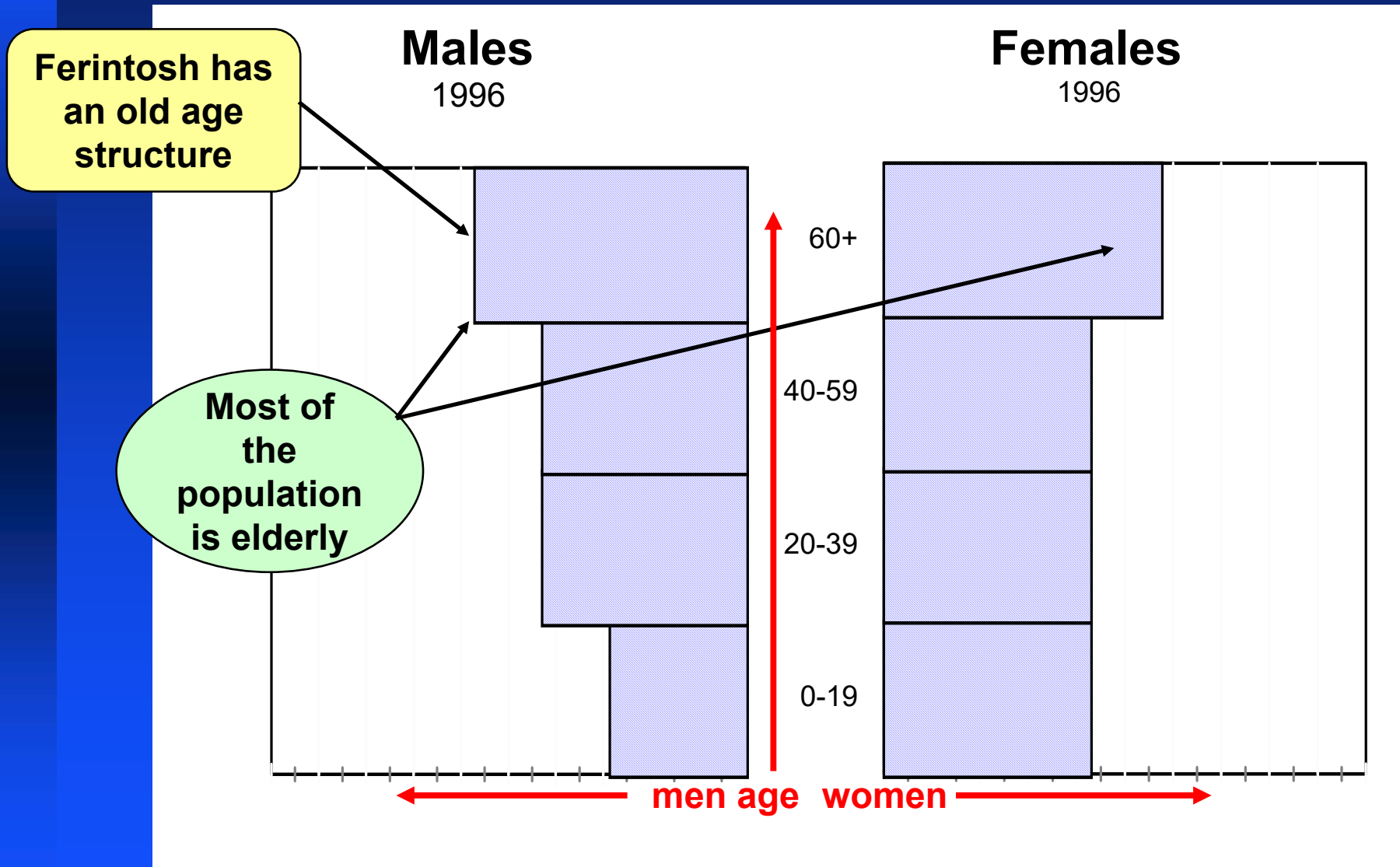
Ferintosh

<http://nre.concordia.ca>

2000/12/04



Ferintosh: 1996



Ferintosh: 1999 and 2005

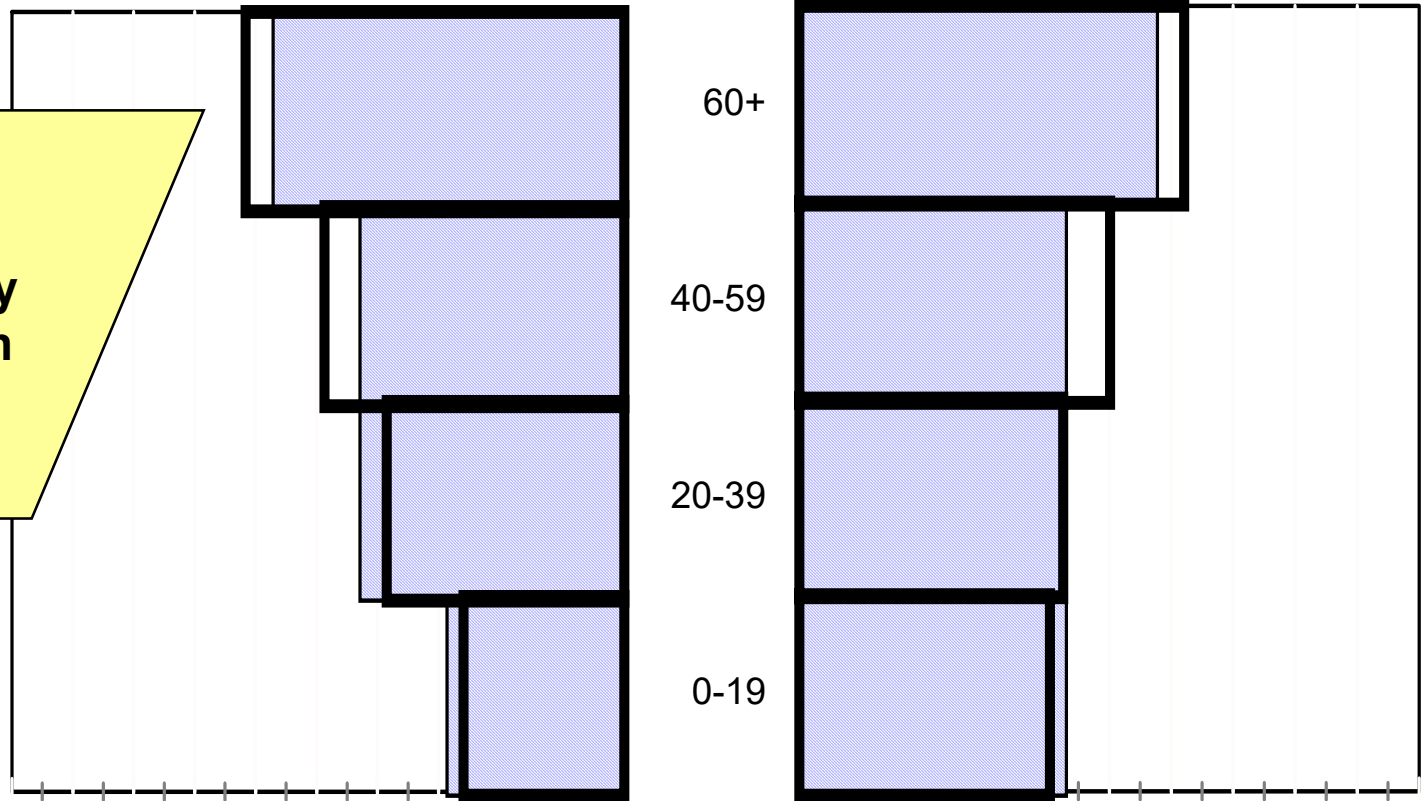
Males

1999 - 2005 (blue=1996)

Females

1999 - 2005

The same
shape is likely
to continue in
the future



Ferintosh and Rural Alberta: 2005

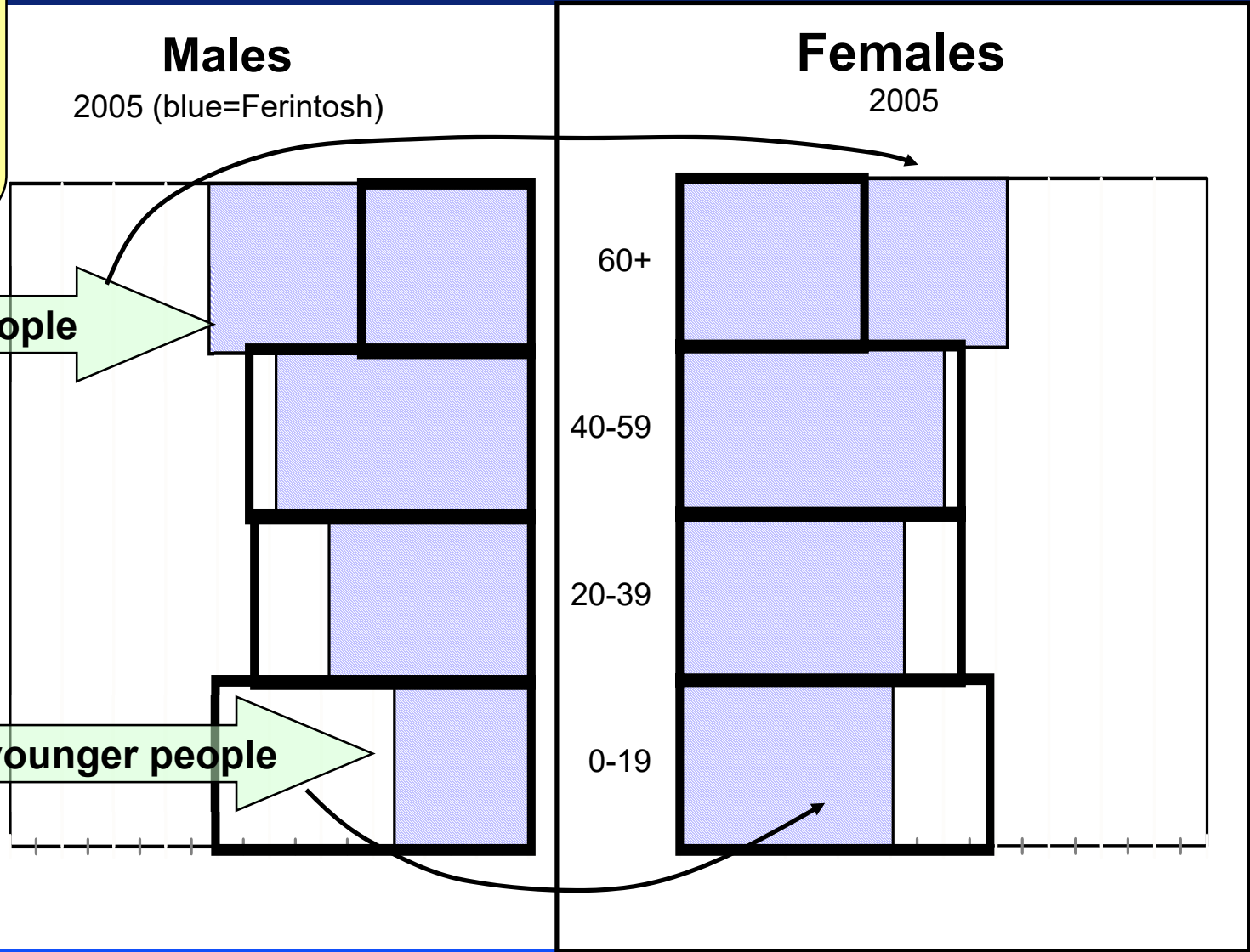
Ferintosh has a reversed population structure from rural Alberta

Males
2005 (blue=Ferintosh)

Females
2005

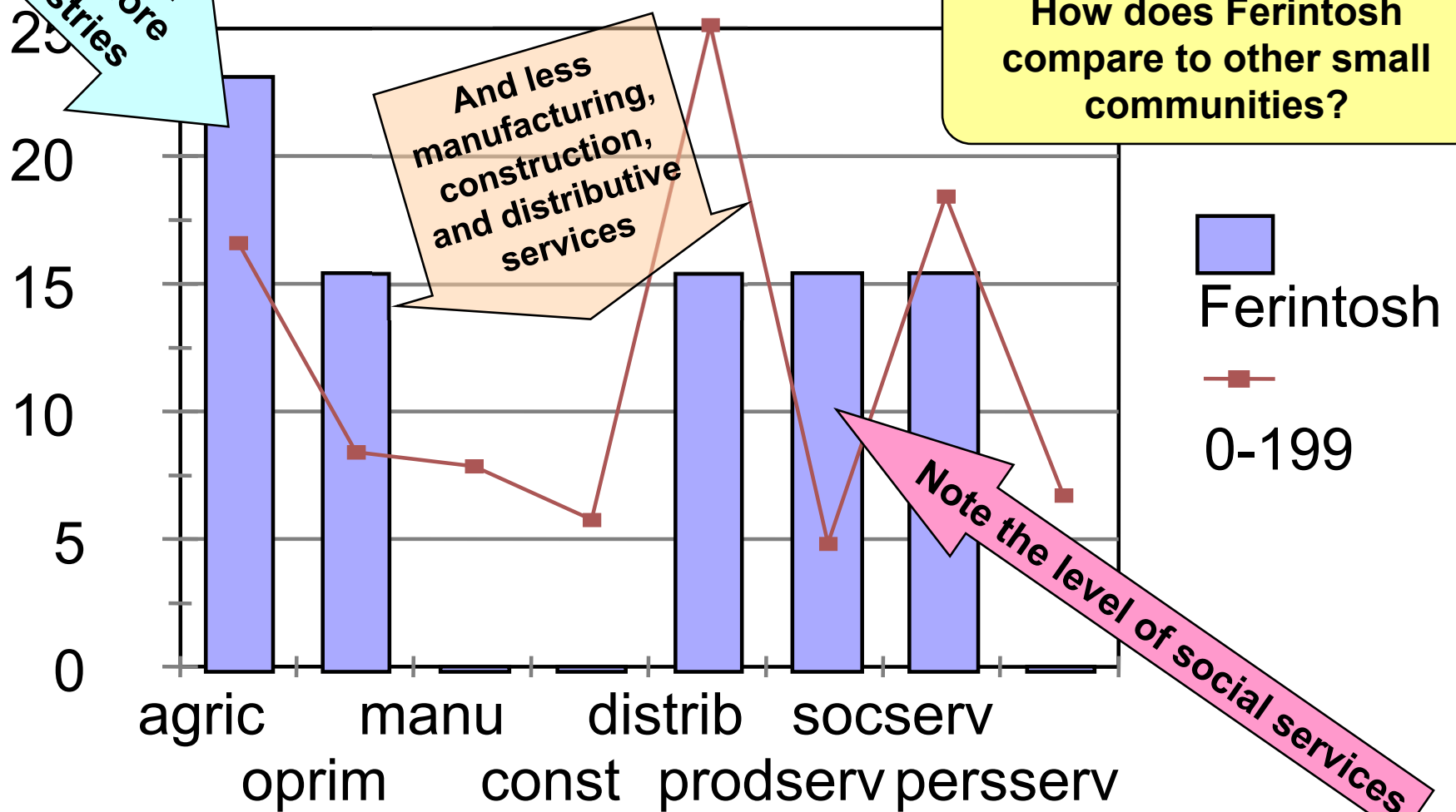
More older people

Fewer younger people



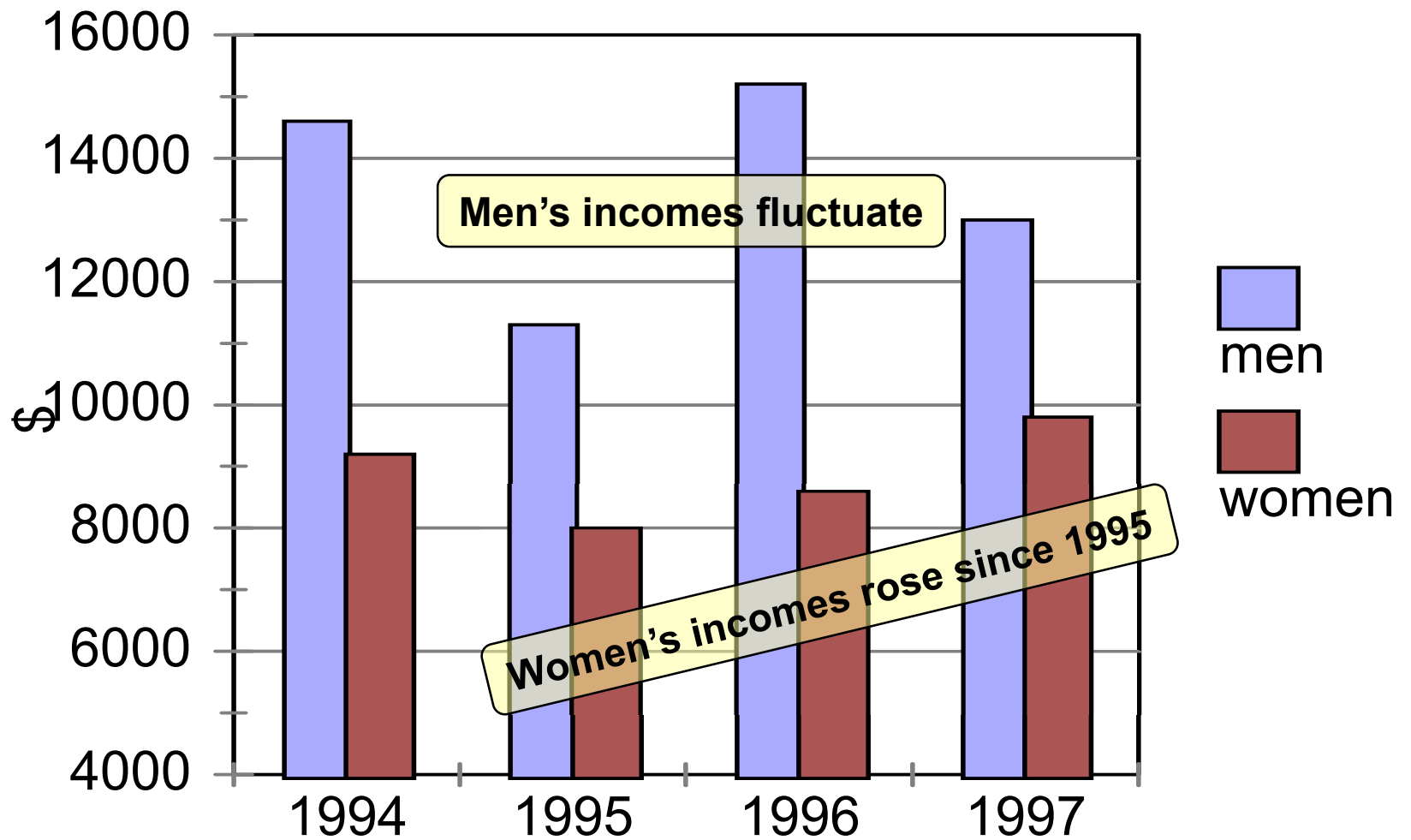
% employed by industry

Ferintosh - 1996

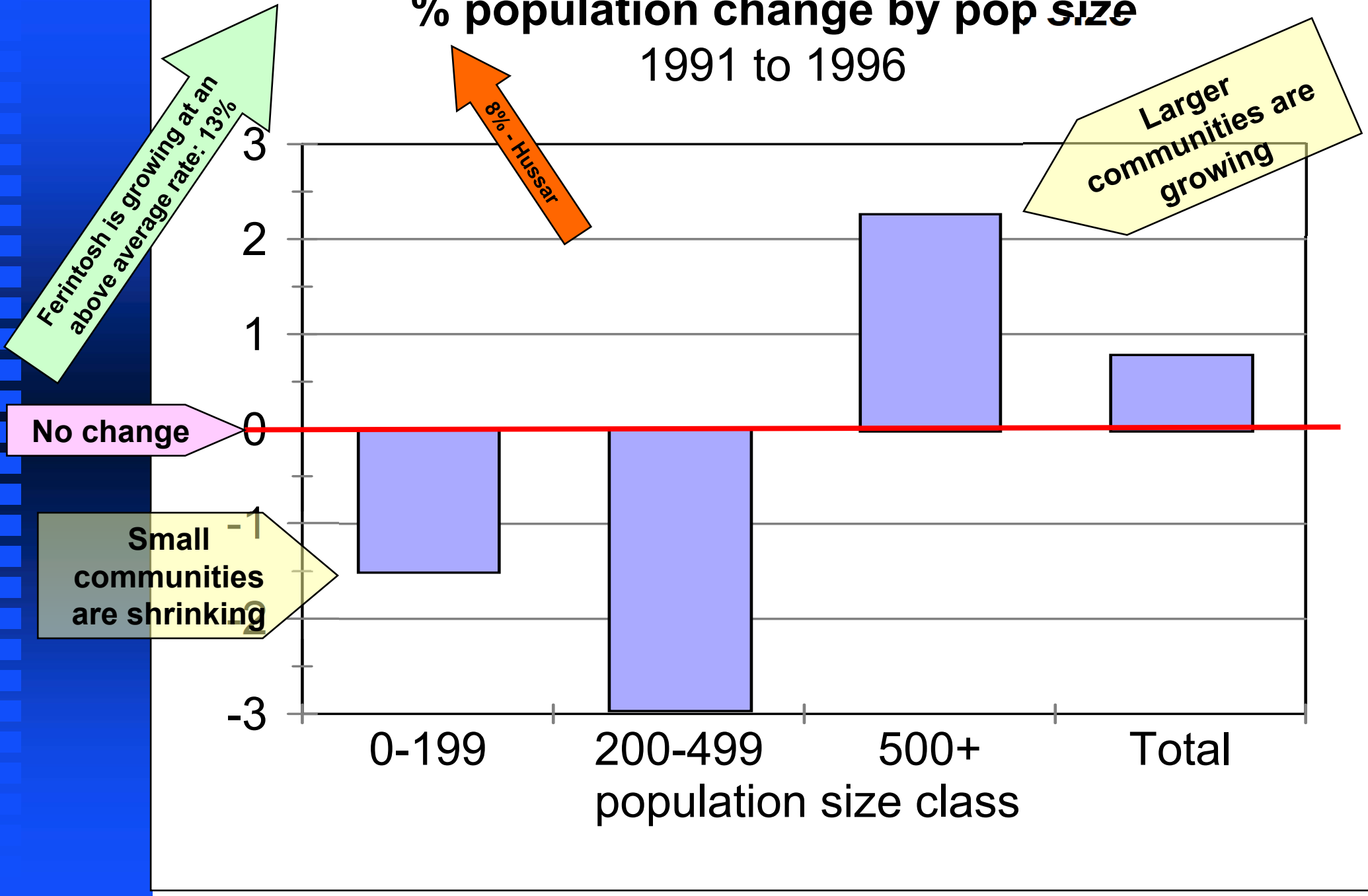


Ferintosh has more primary industries

Average Emp Income - Ferintosh

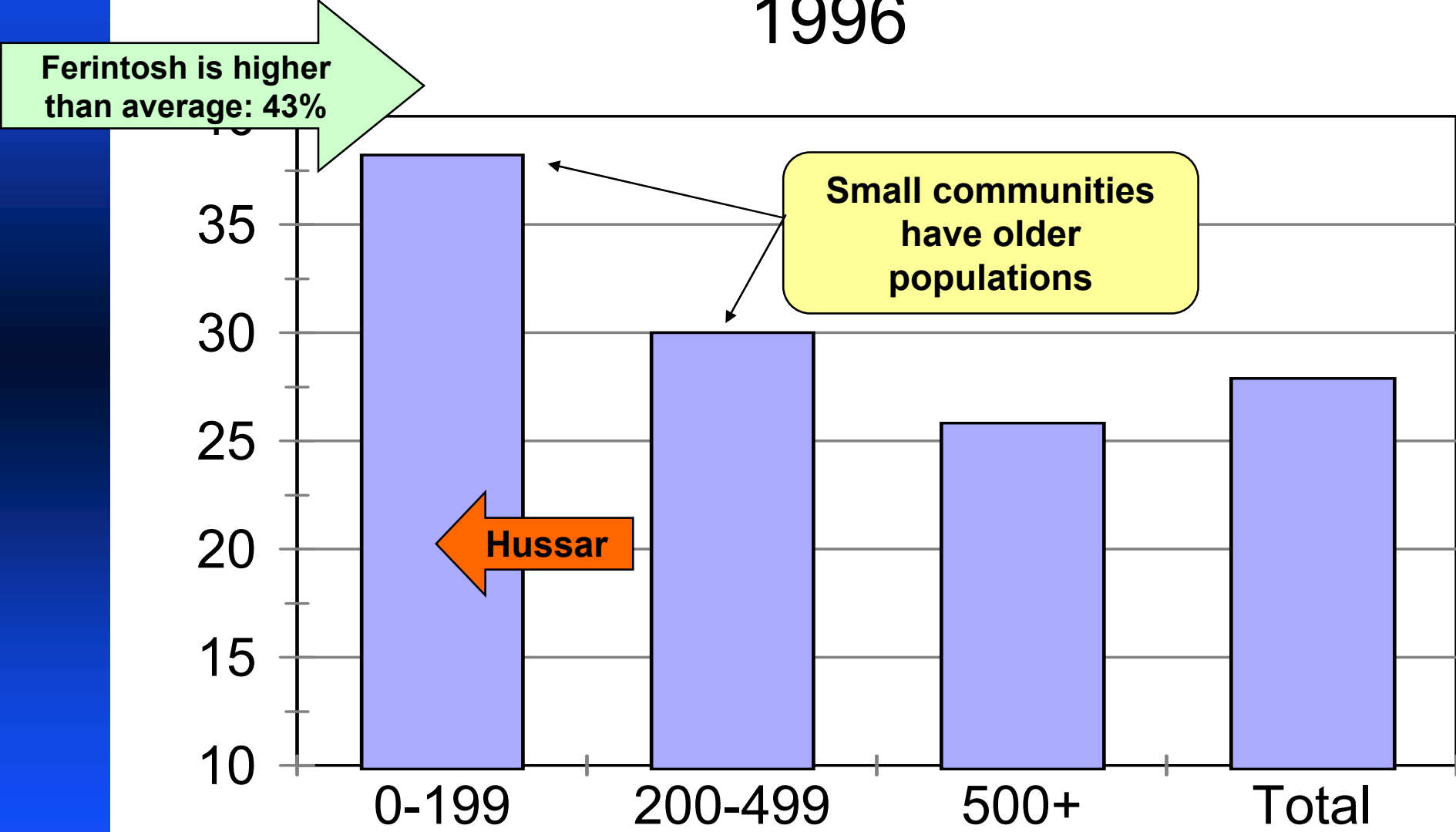


% population change by pop size 1991 to 1996



Old dependency ratio

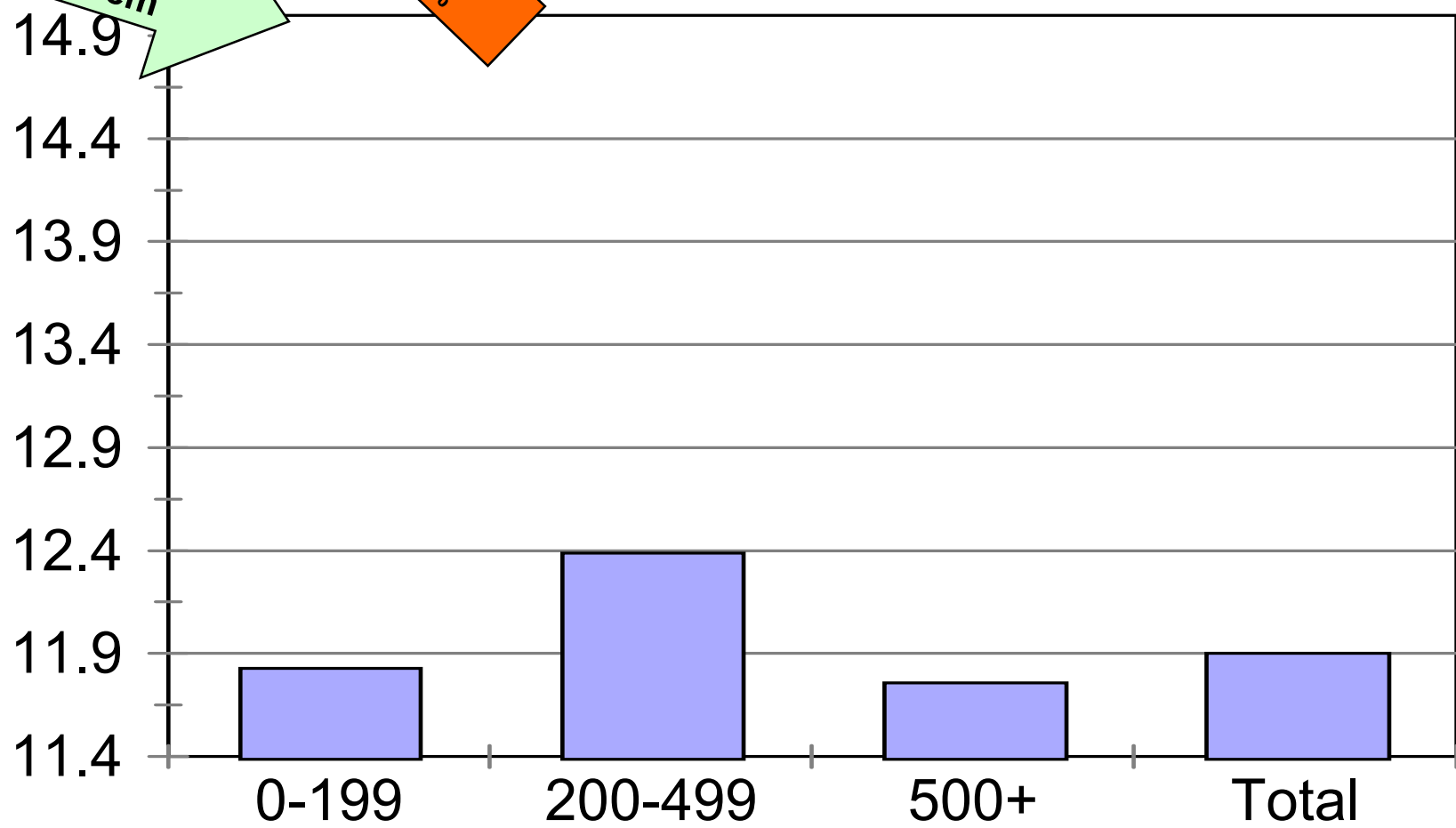
1996



% dwellings in need of major repairs 1996

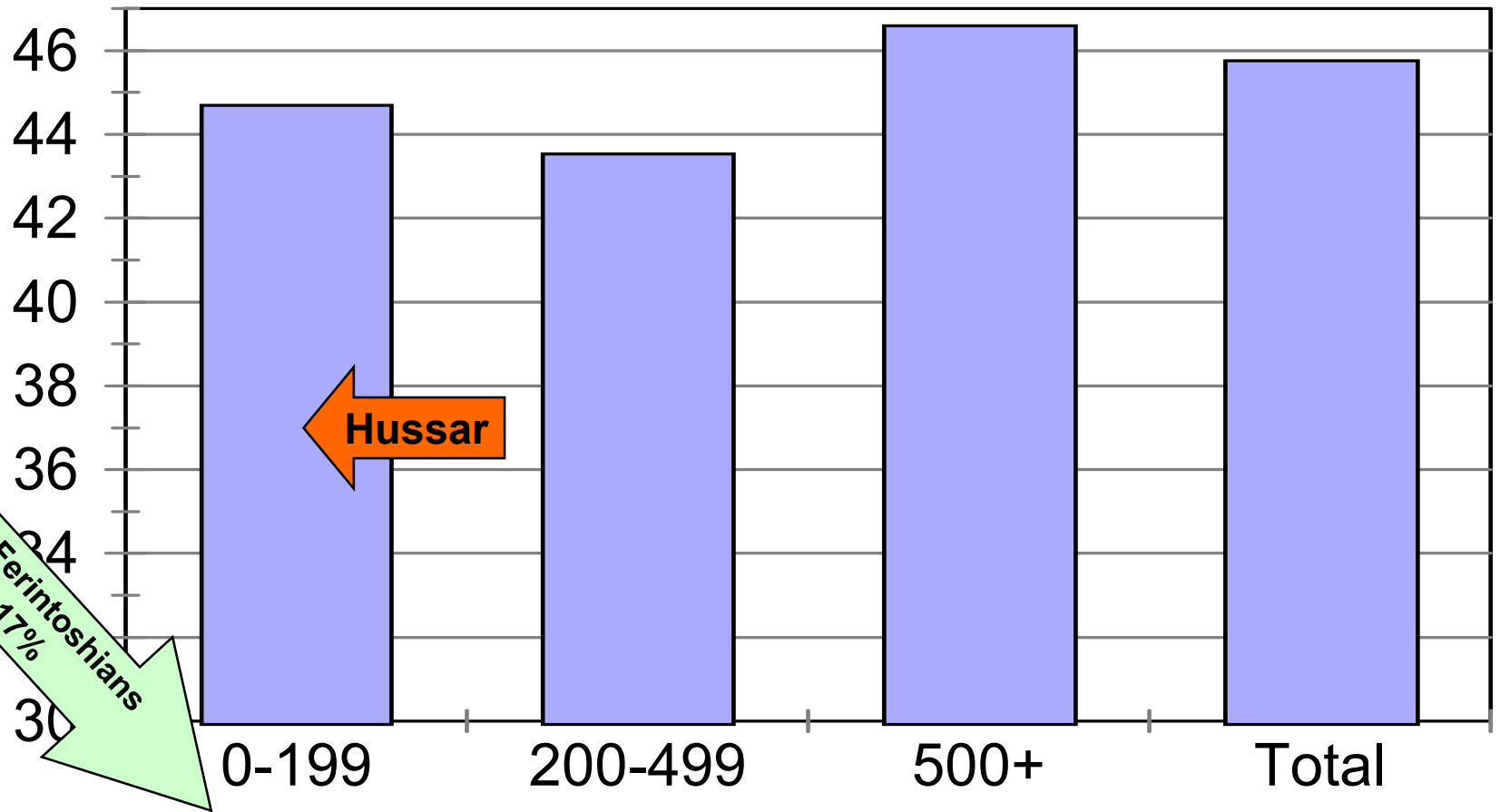
Does Ferintosh have a housing problem

Hussar
17%



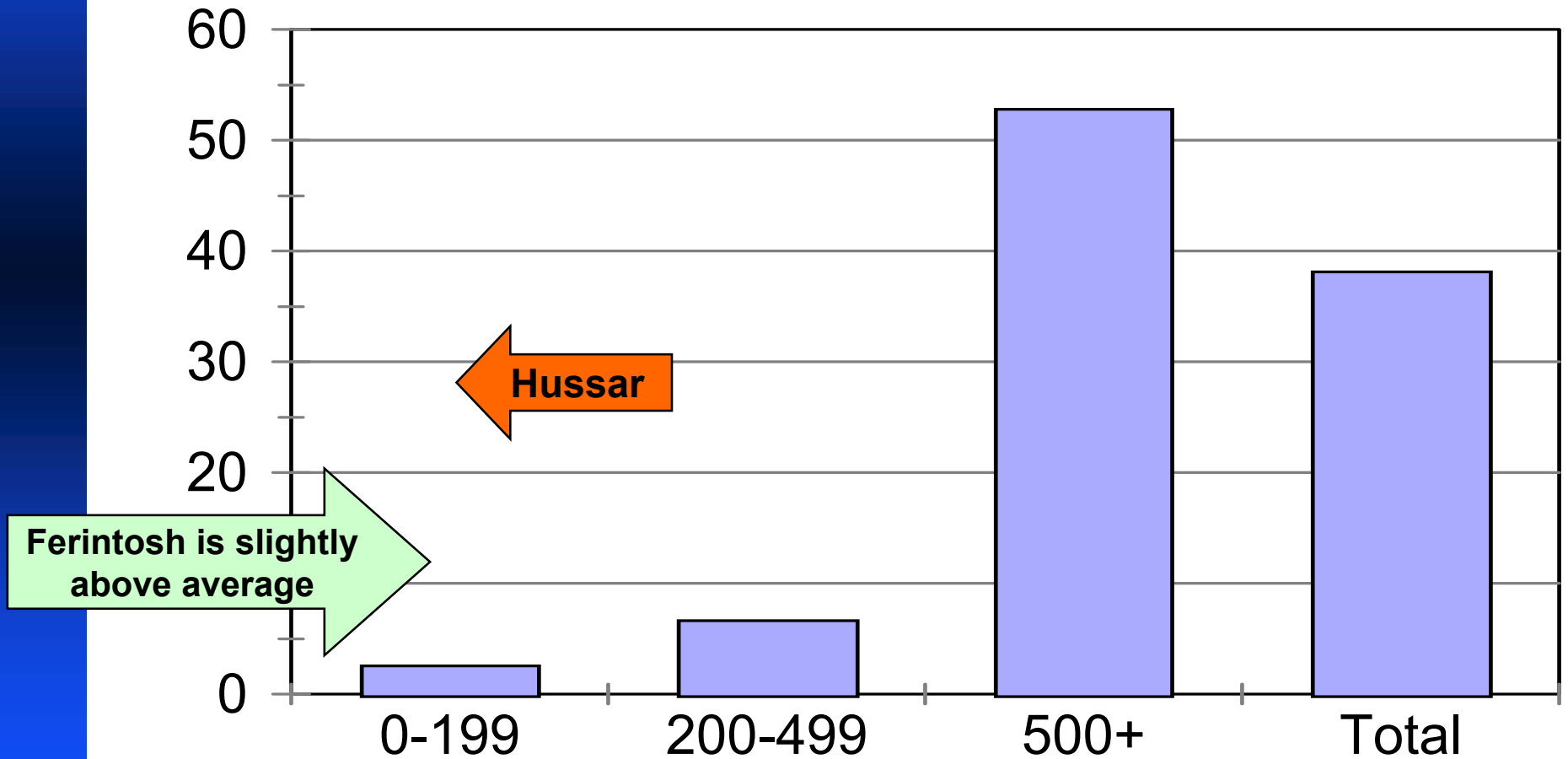
% Commuters

1996



% with government transfers

1996



The New Rural Economy: Options and Choices

Ferintosh

<http://nre.concordia.ca>

2000/12/04

