

PRÉVALENCE DE LA PARTICIPATION AUX JEUX DE HASARD ET D'ARGENT EN LIGNE

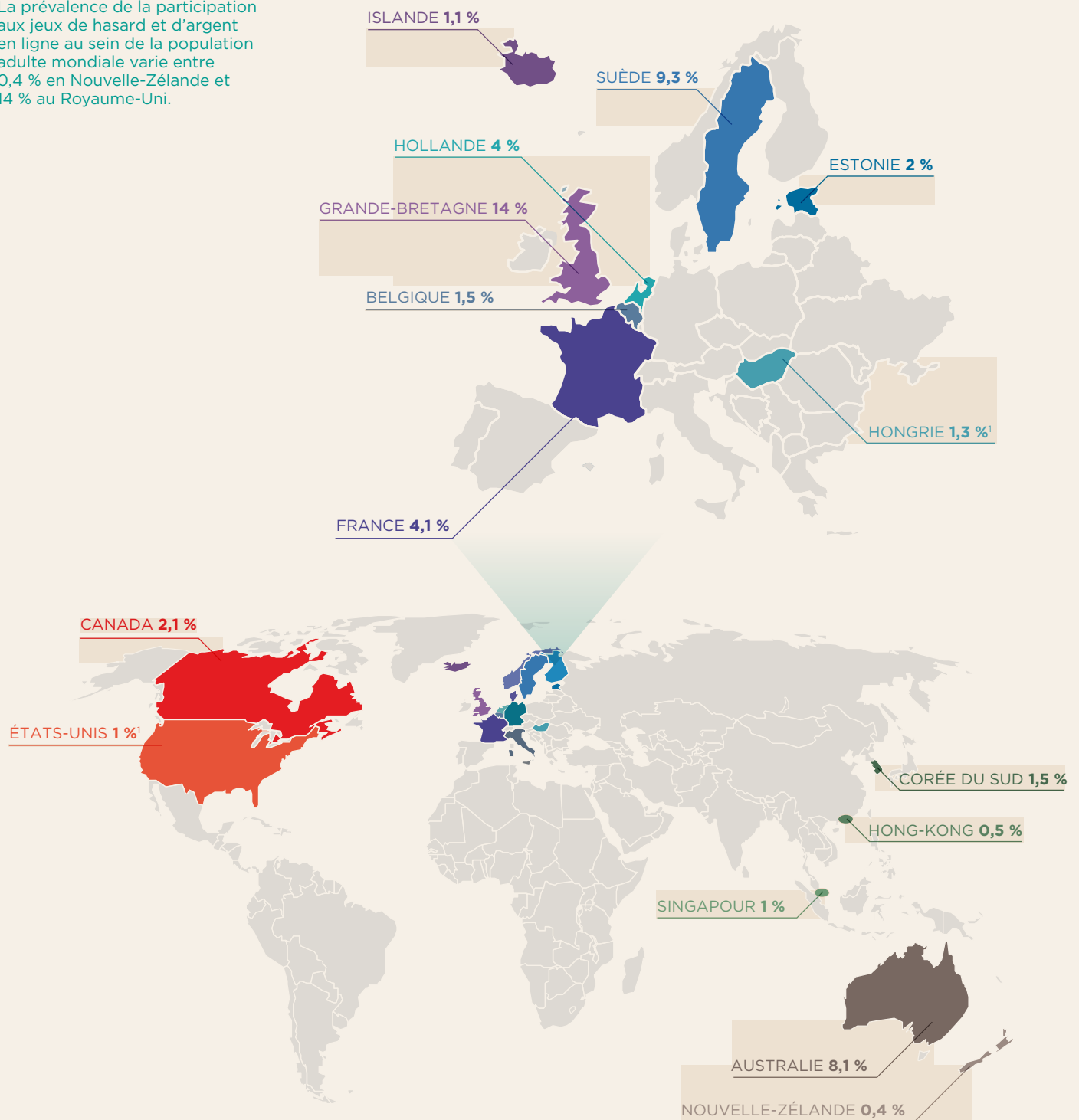


Chaire de recherche sur
l'étude du jeu
Research chair on gambling studies

Feuillet synthèse n°1 - Novembre 2014

DANS LE MONDE

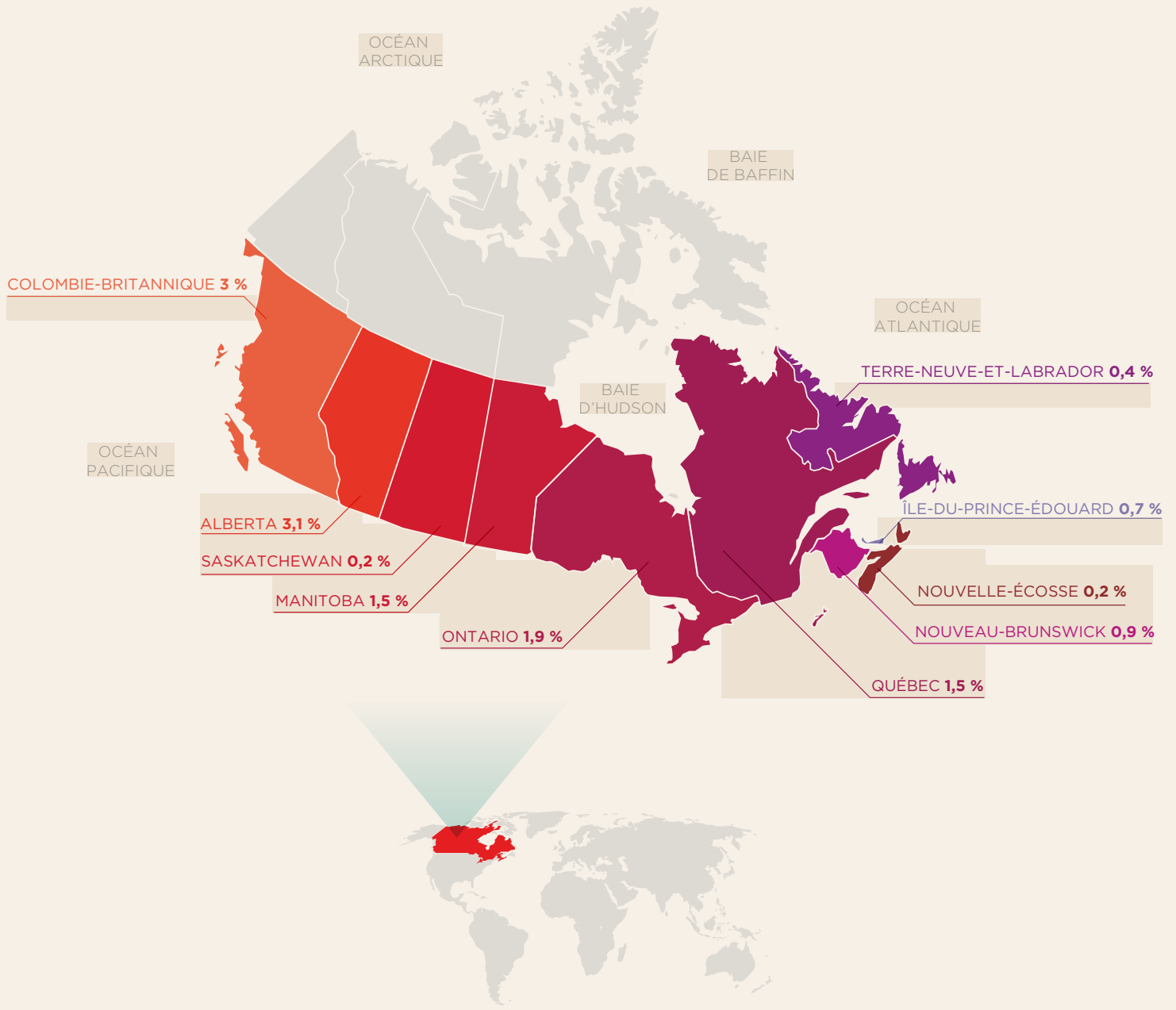
La prévalence de la participation aux jeux de hasard et d'argent en ligne au sein de la population adulte mondiale varie entre 0,4 % en Nouvelle-Zélande et 14 % au Royaume-Uni.



¹ Prévalence à vie.

AU CANADA

La prévalence du jeu en ligne est estimée à 2,1% dans la population canadienne et varie entre les provinces: de 0,2% en Nouvelle-Écosse et en Saskatchewan à 3,1% en Alberta. Au Québec, ce taux est estimé à 1,5%.



MÉTHODOLOGIE

Une revue des enquêtes nationales a permis d'estimer la prévalence de la participation aux jeux de hasard et d'argent en ligne entre 2001 et 2013, dans différents pays, au Canada, ainsi que dans chaque province canadienne. Les pourcentages rapportés correspondent à la prévalence dans les 12 derniers mois, sauf si indication contraire. Les détails méthodologiques de chaque enquête sont disponibles dans les sources originales citées en références.

PAYS	ANNÉE	ÂGE	N
AMÉRIQUE DU NORD			
Canada	2006/2007	18+	8 496
États-Unis	2002	18+	9 282
ASIE			
Corée du Sud	2011	19+	8 000
Hong-Kong	2011	15-64	2 024
Singapour	2011	18+	3 315
EUROPE			
Belgique	2006	16-99	3 002
Estonie	2006	15-74	2 005
France	2014	15-75	15 635
Grande-Bretagne	2010	16+	7 756
Hollande	2005	18-55	12 717
Hongrie	2007	18-64	2 710
Islande	2007	18-70	3 004
Suède	2008/2009	16-74	7 530
PACIFIQUE			
Australie	2011	18-100	15 006
Nouvelle-Zélande	2006/2007	15+	12 488

PROVINCE	ANNÉE	ÂGE	N
Alberta	2009	18+	1 004
Colombie-Britannique	2007	18+	3 000
Île-du-Prince-Édouard	2005	18+	1 000
Manitoba	2006	18+	6 007
Nouveau-Brunswick	2009	19+	2 821
Nouvelle-Écosse	2007	19+	2 500
Ontario	2011	18+	4 035
Québec	2012	18+	12 008
Saskatchewan	2001	19+	1 848
Terre-Neuve-et-Labrador	2009	19+	4 002

REFERENCES

AMÉRIQUE DU NORD

CANADA

Wood, R.T. & Williams, R.J. (2009). Internet Gambling: Prevalence, Patterns, Problems, and Policy Options. Final Report prepared for the Ontario Problem Gambling Research Centre, Guelph, Ontario. January 5, 2009. Retrieved from http://www.abc.net.au/mediawatch/transcripts/0909_originalreport.pdf.

ÉTATS-UNIS

Kessler, R.C., Hwang, I., LaBrie, R., Petukhova, M., Sampson, N.A., Winters, K.C., et al. (2008). DSM-IV pathological gambling in the National Comorbidity Survey Replication. *Psychological Medicine*, 38(9), 1351-1360. doi: 10.1017/S0033291708002900

ASIE

CORÉE DU SUD

Williams, R.J., Lee, C-K., & Back, K-J. (2013). The Prevalence and Nature of Gambling and Problem Gambling in South Korea. *Social Psychiatry and Psychiatric Epidemiology*, 48, 821-834.

HONG KONG

Hong Kong Polytechnic University (2012). The Study of Hong Kong People's Participation in Gambling Activities. Department of Applied Social Sciences. The Hong Kong Polytechnic University. Commissioned by the Secretary for Home Affairs, Government of Hong Kong Special Administrative Region. March 2012. Retrieved from http://www.hab.gov.hk/file_manager/en/documents/policy_responsibilities/others/gambling_report_2011.pdf.

SINGAPOUR

National Council on Problem Gambling (2012). Report of Survey on Participation in Gambling Activities among Singapore Residents, 2011. Singapore: Author. February 23, 2012. Retrieved from <http://app.msf.gov.sg/Portals/0/Summary/research/EDGD/Gambling%20participation%20survey%202011.pdf>.

EUROPE

BELGIQUE

Druine (2009). Belgium. In G. Meyer, T. Hayer, & M. Griffiths (Eds.), *Problem Gambling in Europe: Challenges, Prevention, and Interventions*. New York: Springer. doi: 10.1007/978-0-387-09486-1.

ESTONIE

Laansoo & Niit (2009). Estonia. In G. Meyer, T. Hayer, & M. Griffiths (Eds.), *Problem Gambling in Europe: Challenges, Prevention, and Interventions*. New York: Springer. doi: 10.1007/978-0-387-09486-1.

FRANCE

Costes, J.-M., Eroukmanoff, V., Richard, J.-B., & Tovar, M.-L. (à paraître). Les pratiques de jeux d'argent et de hasard en France en 2014. *Observatoire des jeux (ODJ)*, (6), 9.

GRANDE-BRETAGNE

Wardle, H., Moody, A., Spence, S., Orford, J., Volberg, R., Jotangia, D., Griffiths, M., Hussey, D., & Dobbie, F. (2011). British Gambling Prevalence Survey 2010. Prepared for The Gambling Commission. London: National Centre for Social Research Retrieved from <http://www.gamblingcommission.gov.uk/PDF/British%20Gambling%20Prevalence%20Survey%202010.pdf>.

HOLLANDE

Goudriaan et al (2009). The Netherlands. In G. Meyer, T. Hayer, & M. Griffiths (Eds.), *Problem Gambling in Europe: Challenges, Prevention, and Interventions*. New York: Springer. doi: 10.1007/978-0-387-09486-1.

HONGRIE

Kun B., Balázs H., Arnold, P., Paksi, B., & Demetrovics, Z. (2011). Gambling in western and eastern Europe: The example of Hungary. *Journal of Gambling Studies*. doi:10.1007/s10899-011-9242-4.

ISLANDE

Ólason, D.T. (2009). Gambling and Problem Gambling Studies among Nordic Adults: Are they Comparable? Conference presentation @ 7th Nordic Conference, Helsinki, Finland, May, 2009.

SUÈDE

Abbott, M.X., Romild, U., & Volberg, R.A. (2013). Gambling and Problem Gambling in Sweden: Changes Between 1998 and 2009. *Journal of Gambling Studies*, DOI 10.1007/s10899-013-9396-3.

PACIFIQUE

AUSTRALIE

Gainsbury et al. (2013). How the Internet is Changing Gambling: Findings from an Australian Prevalence Survey. *Journal of Gambling Studies*. DOI 10.1007/s10899-013-9404-7

NOUVELLE-ZÉLANDE

Mason, K. (2009). A Focus on Problem Gambling: Results of the 2006/07 New Zealand Health Survey. Wellington: Ministry of Health. Retrieved from <http://www.health.govt.nz/publication/focus-problem-gambling-results-2006-07-new-zealand-health-survey>.

CANADIAN PROVINCES

ALBERTA

Williams, R.J., Belanger, Y.D., & Arthur, J.N. (2011). Gambling in Alberta: History, Current Status, and Socioeconomic Impacts. Final Report to the Alberta Gaming Research Institute. Edmonton, Alberta. April 2, 2011. Appendix A: 2008 and 2009 Alberta Population Surveys.

COLOMBIE-BRITANNIQUE

Ipsos-Reid & Gemini Research. (2008). British Columbia Problem Gambling Prevalence Study. Victoria, BC: Ministry of Public Safety and Solicitor General. Retrieved from <https://www.gaming.gov.bc.ca/reports/docs/rpt-rg-prevalence-study-2008.pdf>.

ÎLE-DU-PRINCE-ÉDOUARD

Doiron, J. (2006). Gambling and Problem Gambling in Prince Edward Island. Submitted to Prince Edward Island Department of Health. Retrieved from http://www.gov.pe.ca/photos/original/doh_GambReport.pdf.

MANITOBA

Lemaire, J., MacKay, T., & Patton, D. (2008). Manitoba gambling and problem gambling 2006. Winnipeg, MB: Addictions Foundation of Manitoba. Retrieved from the Addictions Foundation of Manitoba web site: <http://www.afm.mb.ca>

NOUVEAU-BRUNSWICK

MarketQuest Research. (2010). 2009 New Brunswick Gambling Prevalence Study. Prepared for Department of Health and New Brunswick Lotteries and Gaming Corporation, Government of New Brunswick. Fredericton, NB. Retrieved from http://www.gnb.ca/redirect/0162/gaming/2009_NB_Gambling_Prevalence_Study-e.pdf.

NOUVELLE-ÉCOSSE

Focal Research Consultants (2008). 2007 Adult Gambling Prevalence Study. Halifax, NS: Nova Scotia Health Promotion and Protection. Retrieved from http://www.nsgamingfoundation.org/uploads/Adult_Gambling_Report.pdf.

ONTARIO

Williams, R.J. & Volberg, R.A. (2013). Gambling and Problem Gambling in Ontario. Report prepared for the Ontario Problem Gambling Research Centre and the Ontario Ministry of Health and Long Term Care. June 17, 2013. Retrieved from <https://www.uleth.ca/dspace/handle/10133/3378>.

QUÉBEC

Kairouz, S., & Nadeau, L. (2014). Portrait du jeu au Québec: Prévalence, incidence et trajectoires sur quatre ans. Montreal, QC: Université Concordia. Retrieved from http://www.concordia.ca/content/dam/concordia/research/lifestyle-addiction/docs/ENHJEU-QC%202012%20-%20RAPPORT%20FINAL%20FRQ-SC%20_19.02.2014%20%281%29.pdf.

SASKATCHEWAN

Wynne, H. (2002). Gambling and Problem Gambling in Saskatchewan: Final Report. Ottawa, ON: Canadian Centre on Substance Abuse. Retrieved from <http://www.health.gov.sk.ca/adx/asp/adxGetMedia.aspx?DocID=317,94,88,Documents&MediaID=166&Filename=gambling-final-report.pdf>.

TERRE-NEUVE- ET-LABRADOR

MarketQuest Research (2009). 2009 Newfoundland and Labrador Gambling Prevalence Study. Prepared for Department of Health and Community Services, Government of Newfoundland and Labrador. St. John's, NL: Department of Health and Community Services. Retrieved from http://www.health.gov.nl.ca/health/publications/2009_gambling_study.pdf.



**FACULTÉ DES ARTS
ET DES SCIENCES**

Chaire de recherche
sur l'étude du jeu

CHAIRE DE RECHERCHE SUR L'ÉTUDE DU JEU

Université Concordia
2080 Rue Mackay
Montréal, Québec, Canada H3G 1M8

Téléphone +1 514 848.2424 poste 5398
Site web www.concordia.ca/fr/recherche/chairejeu
Courriel lifestyle.lab@concordia.ca