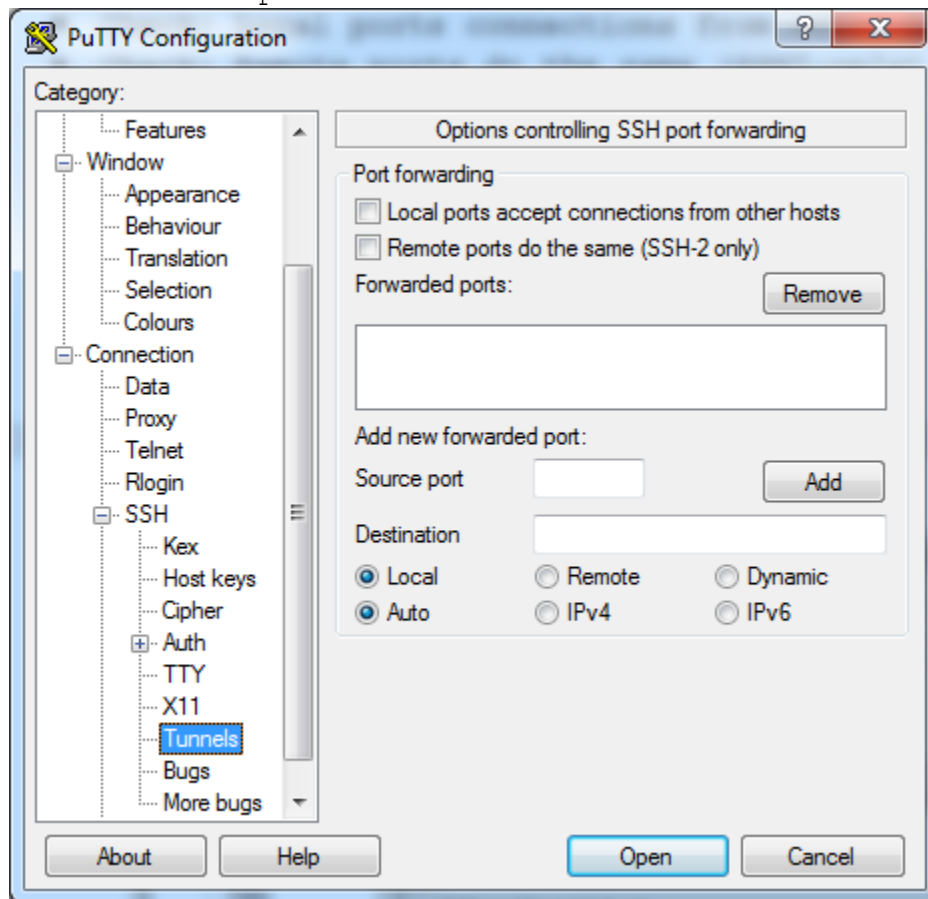


Using Matlab software from outside Concordia

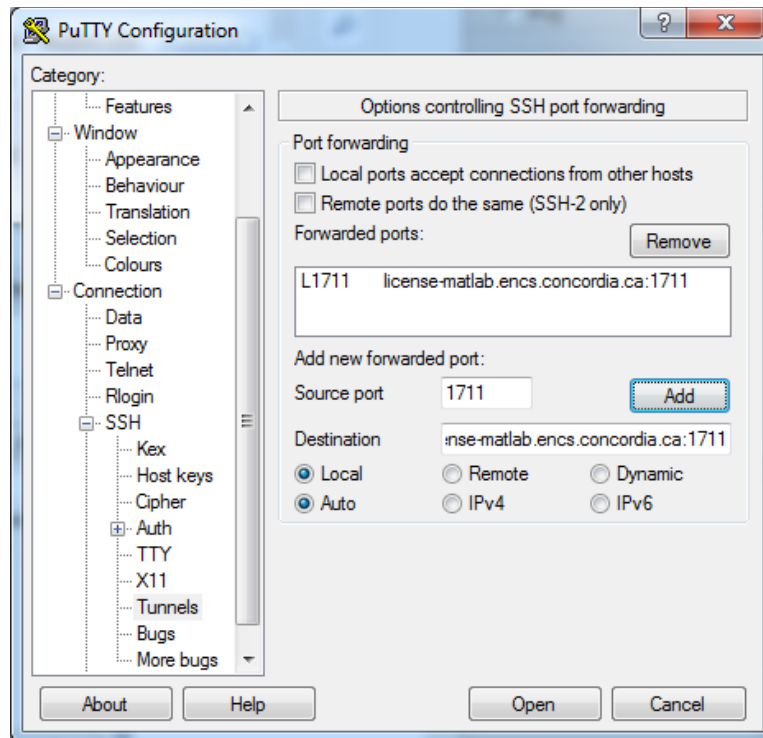
I. Establish SSH Tunnel with Putty

Putty is available for download from <https://www.putty.org/>. Once installed, follow these steps to connect to establish SSH tunnel.

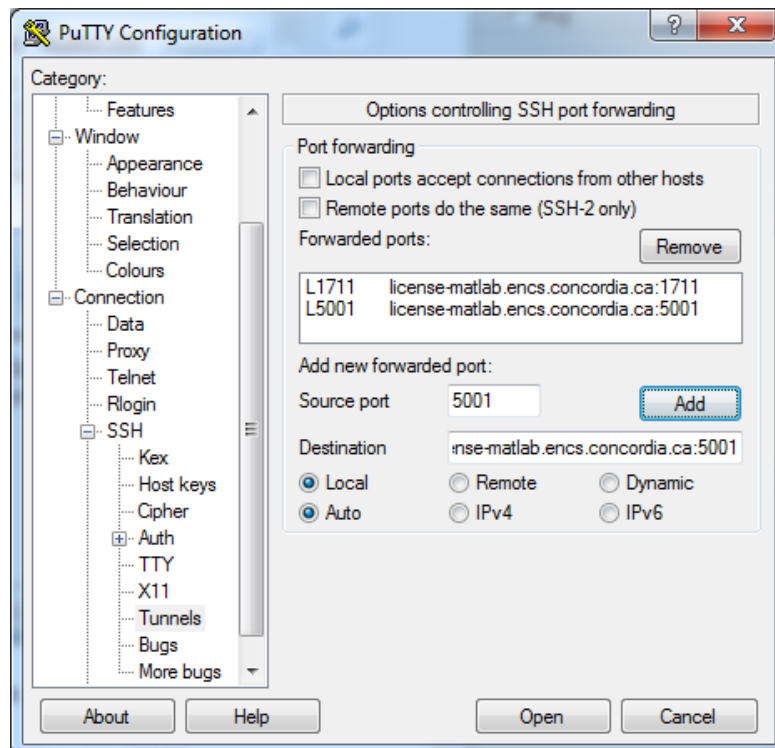
1. Double-click the Putty icon on your client (home) machine.
2. In the **Category** pane of the application window, select the **Tunnels** option found under **Connection** → **SSH**



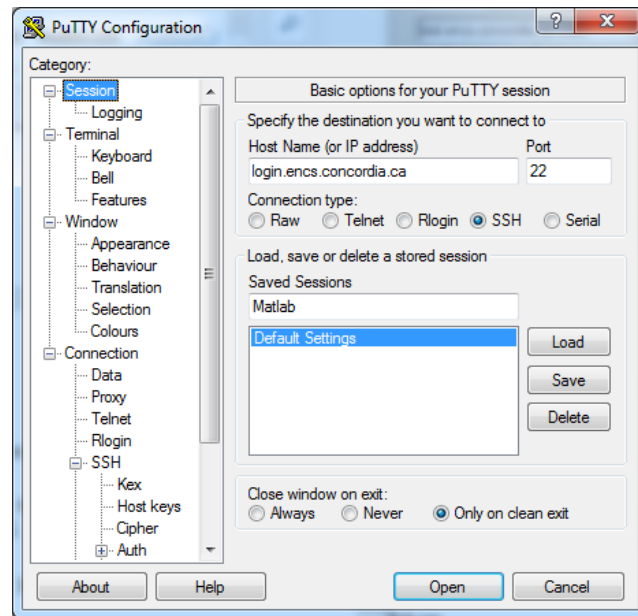
- **Source port:** 1711
- **Destination:** `license-matlab.encs.concordia.ca:1711`
- Click the **Add** button



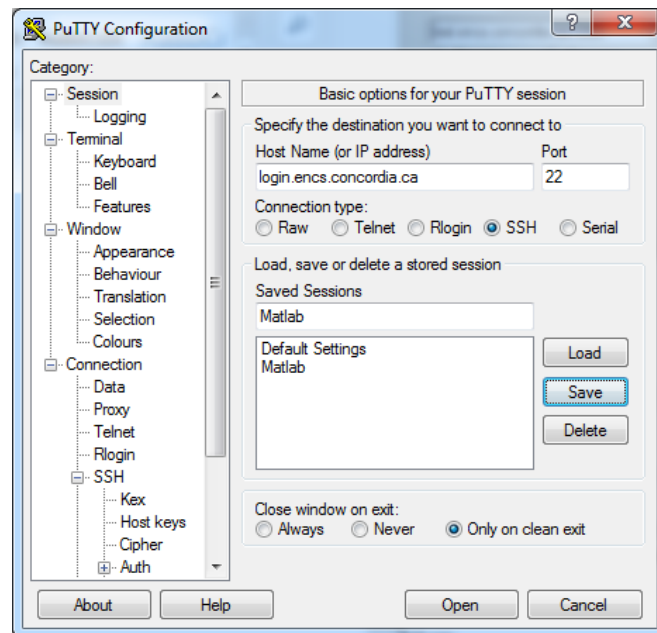
- Add another source port and destination
- Source port: 5001
- Destination: `license-matlab.encs.concordia.ca:5001`
- Click the **Add** button



3. In the **category** pane, click on **Session** and enter the following information:
- In Hostname: **login.encs.concordia.ca**)
 - In connection type: select **SSH** as your protocol, set the port number to **22**
 - In Saved Sessions: **Matlab**



- Click the **Save** button

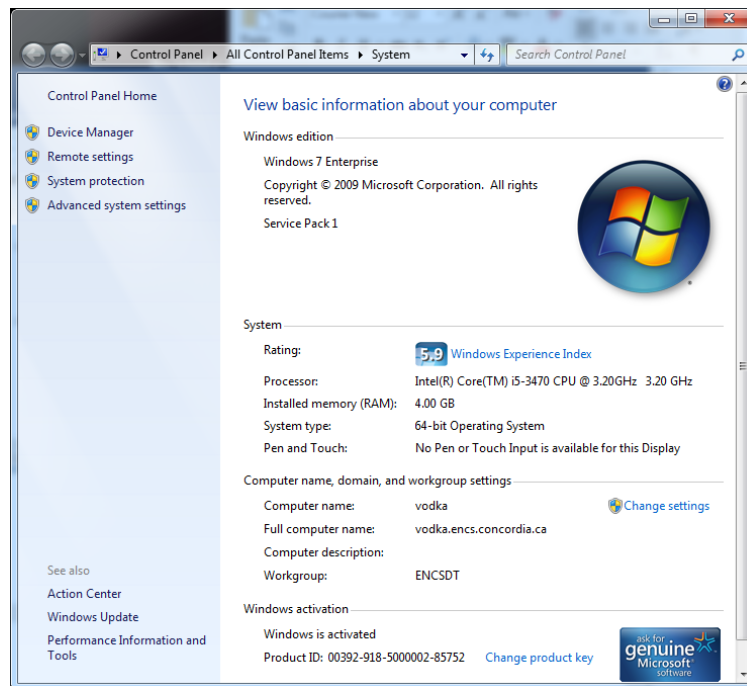


- Close the Putty

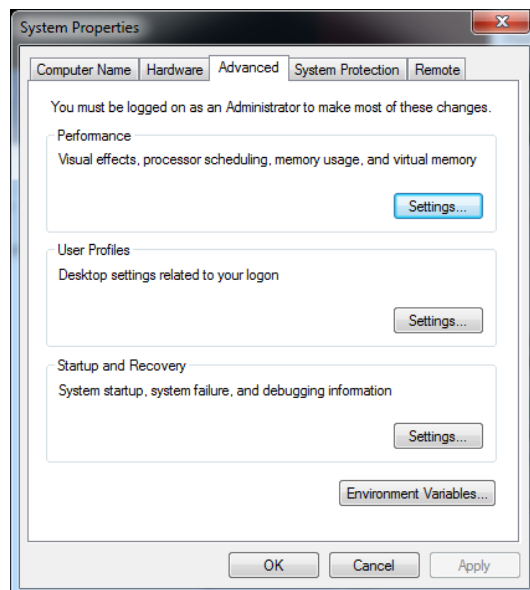
II. Create a system environment variable

1. Right click "Computer" on the Desktop(windows 7)

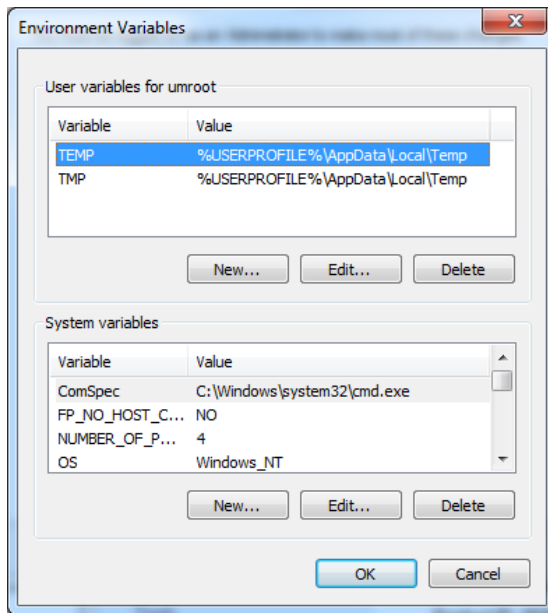
- Select "properties"



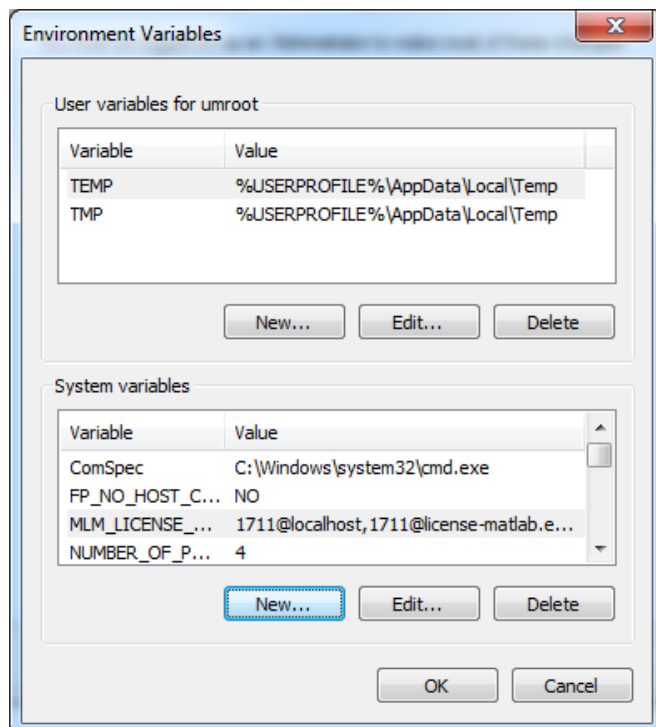
- Select "Advanced system setting"



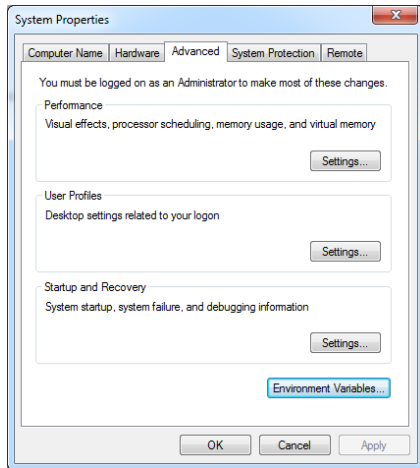
- Select "Environment variables"



- Under the “System variables”, select “New...”
- Variable name: MLM_LICENSE_FILE
- Variable value: 1711@localhost, 1711@license-matlab.encs.concordia.ca
- Click “OK”



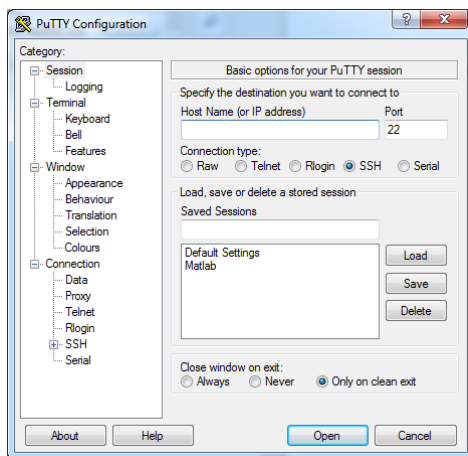
- Click “OK”



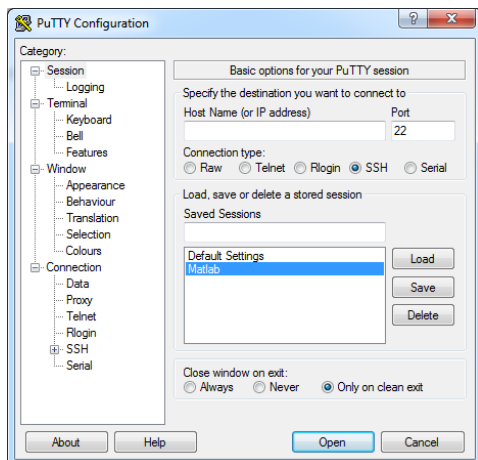
- Click “OK”

Now it is ready to using Matlab.

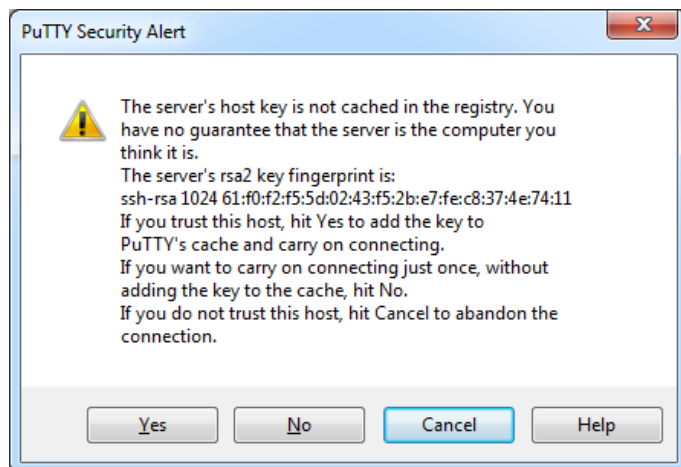
III. Using Matlab, launching Putty



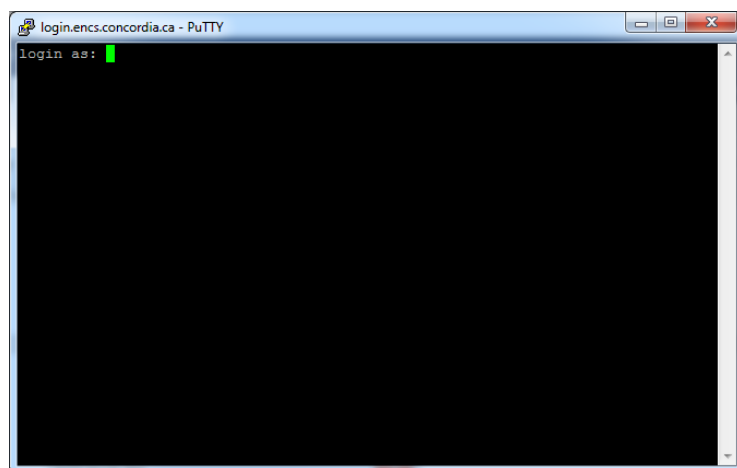
- Select “Matlab “



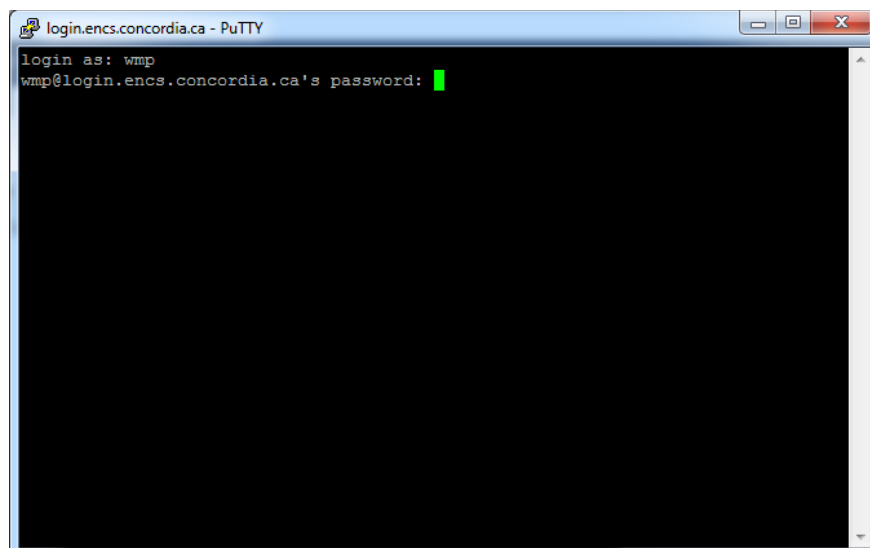
- Click “Open”



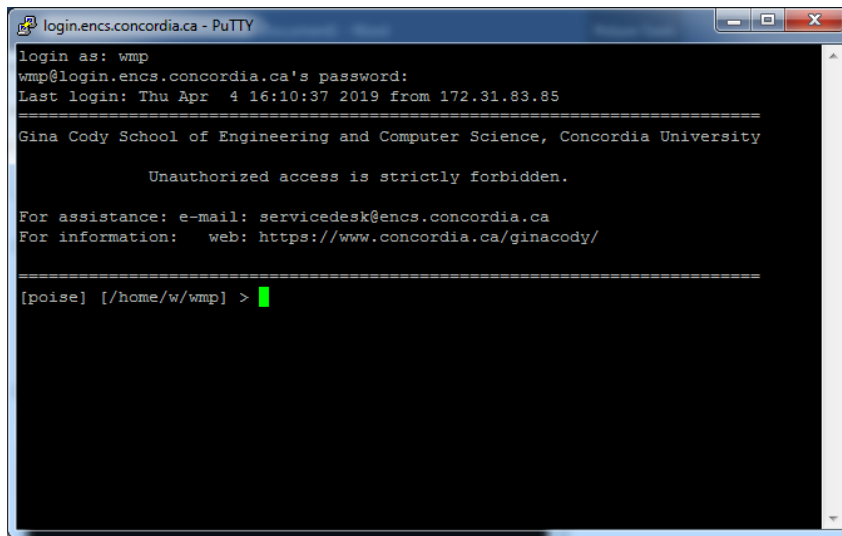
- Click "Yes"



- Type: ENCS username, then Enter



- Type: password, then Enter



```
login.encs.concordia.ca - PuTTY
login as: wmp
wmp@login.encs.concordia.ca's password:
Last login: Thu Apr  4 16:10:37 2019 from 172.31.83.85
=====
Gina Cody School of Engineering and Computer Science, Concordia University

      Unauthorized access is strictly forbidden.

For assistance: e-mail: servicedesk@encs.concordia.ca
For information:  web: https://www.concordia.ca/ginacody/
=====
[poise] [/home/w/wmp] >
```

- Double click “Matlab” icon on the Desktop to launching the Matlab

Done.