

Remote Access Via Remote Desktop

Remotely connecting to your office desktop requires a client-server interface using Remote Desktop.

The following page describes the procedures for establishing a SSH Tunnel and connecting the client (home) machine to your office machine.

I. On the ENCS machine in your office

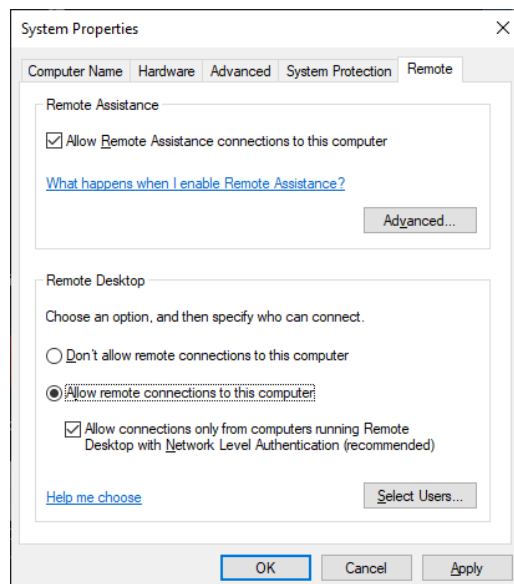
To allow remote access to an ENCS machine in your office, this option has be enable on the machine.

In Windows 7

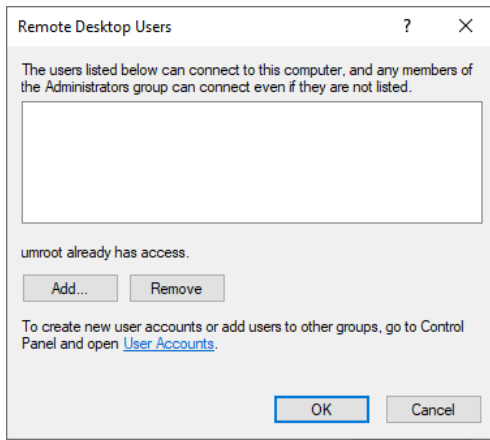
- Right click on **My Computer** and choose **Properties**
- Select Remote settings
- On the **System properties**, choose the **Remote** tab.
 - Check: Allow remote assistance connections to this computer
 - Choose: Allow connections from computers running any version of Remote Desktop (less secure)
 - Click the "Select Users"The procedure is same as windows 10, see below

In Windows 10

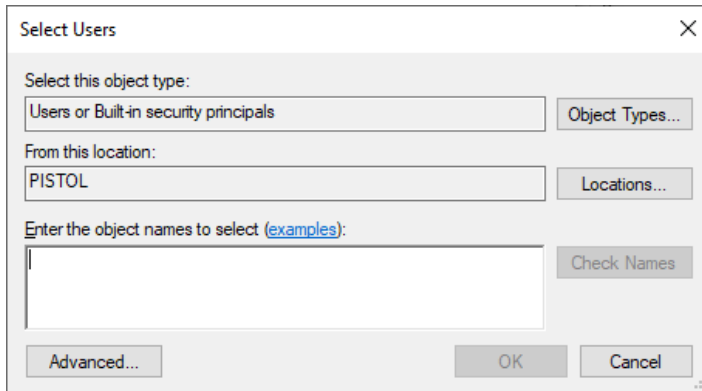
- Right click on **This PC** and choose **Properties**
- Select Remote settings
- On the **System properties**, choose the **Remote** tab.
 - Check: Allow remote assistance connections to this computer
 - Choose: Allow remote connections to this computer



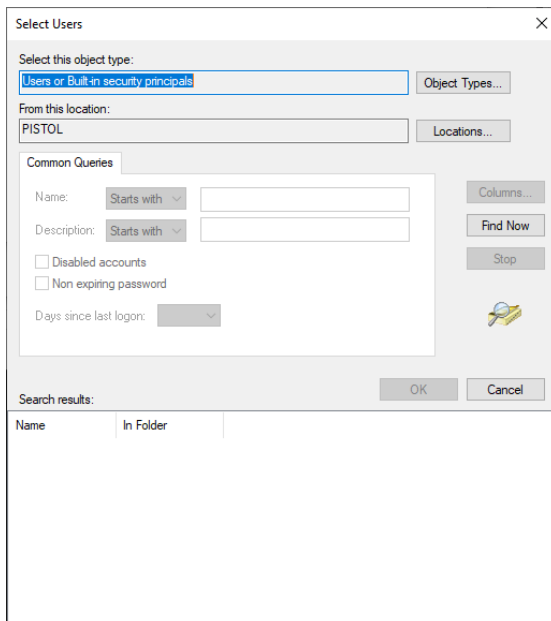
- Click the "Select Users"



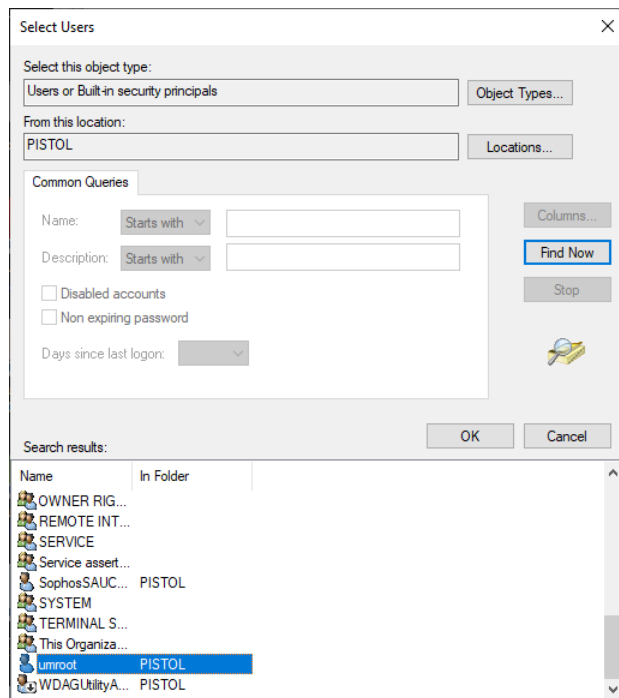
Click "Add"



Click "Advanced"



Click "Find Now"



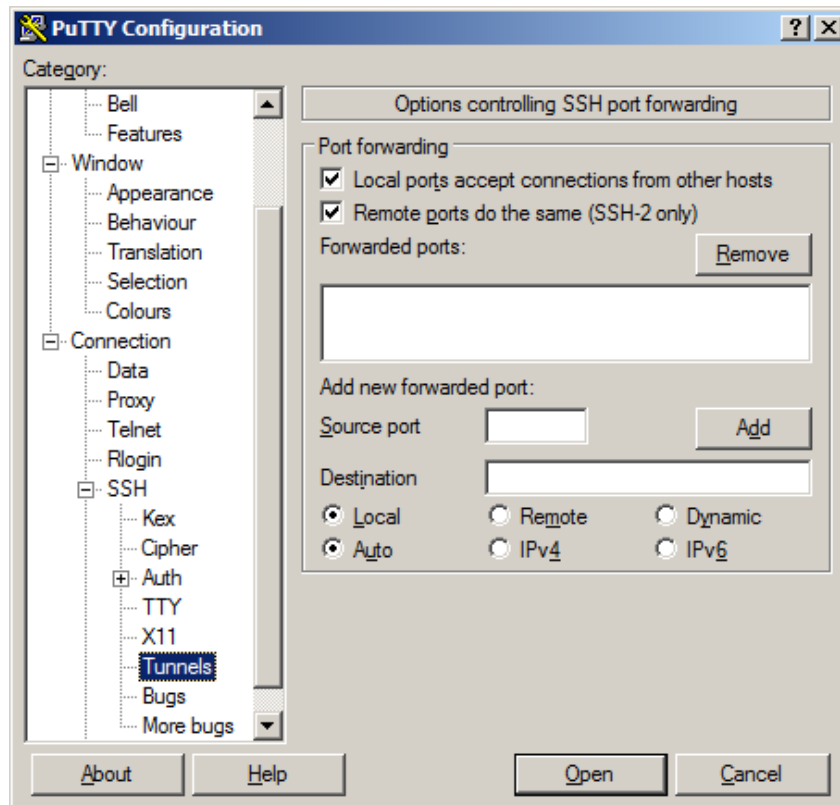
Select the user you want to log in "Remote Desktop",
example: umroot
Then click ok, ok, ok, ok to close those windows.

II. On your client (home) machine

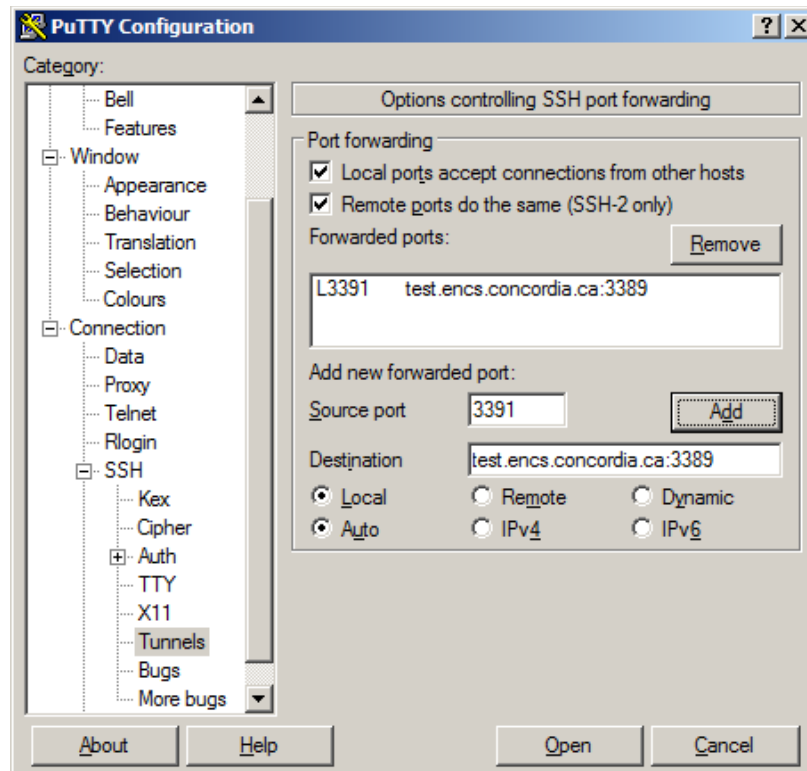
Establish SSH Tunnel with Putty - Windows

A SSH tunnel is necessary to ensure secure communication between the two machines. Putty can be used as the SSH client software to establish the SSH tunnel. Putty is available for download from <https://www.putty.org/>. Once installed, follow these steps to connect to the ENCS machine.

1. Double-click the Putty icon on your client (home) machine.
2. In the **Category** pane of the application window, select the **Tunnels** option found under **Connection** → **SSH**
3. On the main pane, in the **Port Forwarding** section, do the following:
 - Check: Local ports connections from other hosts
 - Check: Remote ports do the same (SSH2-only)

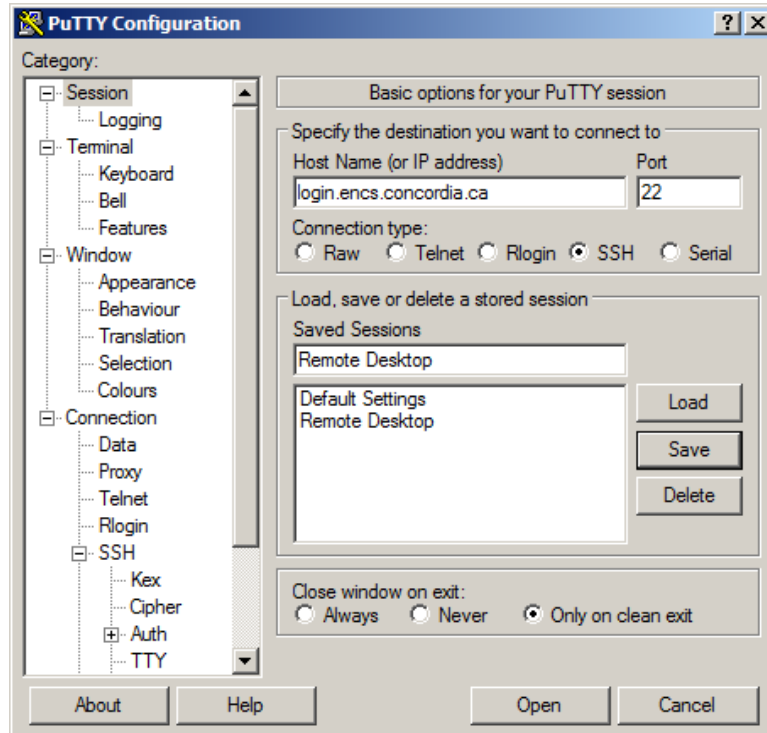


- **Source port: 3391**
- **Destination: hostname.enss.concordia.ca:3389**
Where **hostname** is your office machines name.
For Example: test.enss.concordia.ca
- Click the **Add** button



4. In the **category** pane, click on **Session** and enter the following information:

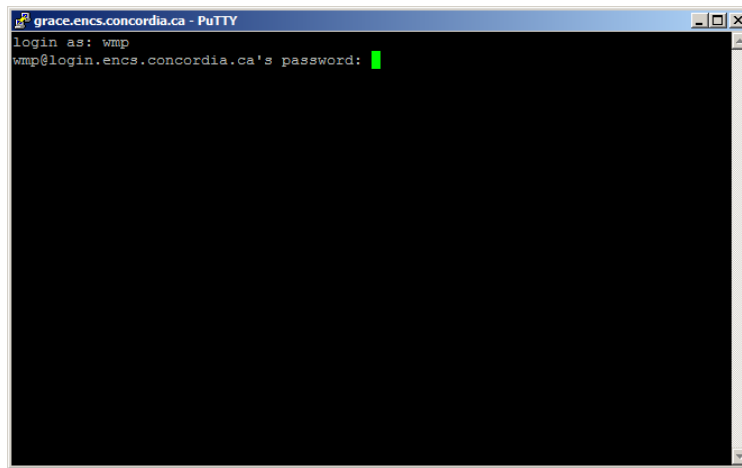
- In Hostname: enter the hostname of the machine through which you want to establish your tunnel (use **login.encs.concordia.ca**)
- In connection type: select **SSH** as your protocol, set the port number to **22**
- In Saved Sessions: **Remote Desktop**
- Click the **Save** button



- Click open, a windows will show up

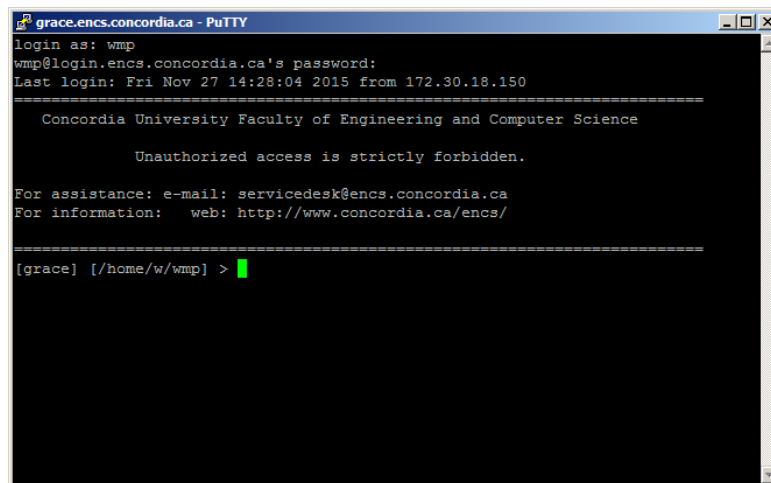


- Enter your ENCS username



```
grace.encs.concordia.ca - PuTTY
login as: wmp
wmp@login.encs.concordia.ca's password: █
```

- Enter your ENCS password



```
grace.encs.concordia.ca - PuTTY
login as: wmp
wmp@login.encs.concordia.ca's password:
Last login: Fri Nov 27 14:28:04 2015 from 172.30.18.150
=====
Concordia University Faculty of Engineering and Computer Science

Unauthorized access is strictly forbidden.

For assistance: e-mail: servicedesk@encs.concordia.ca
For information: web: http://www.concordia.ca/encs/
=====
[grace] [/home/w/wmp] > █
```

The tunnel has been established

Note: Next time you do this, you can simply launch Putty, click the session name **Remote Desktop**, then click **Open** button to establish the SSH tunnel.

Connecting via Remote Desktop

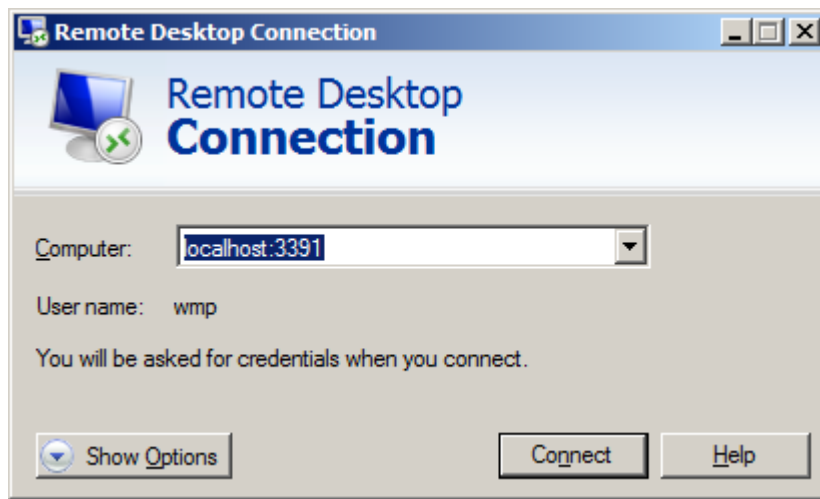
Once you have established the Tunnel, you are ready to establish the remote desktop connection.

In Windows 7

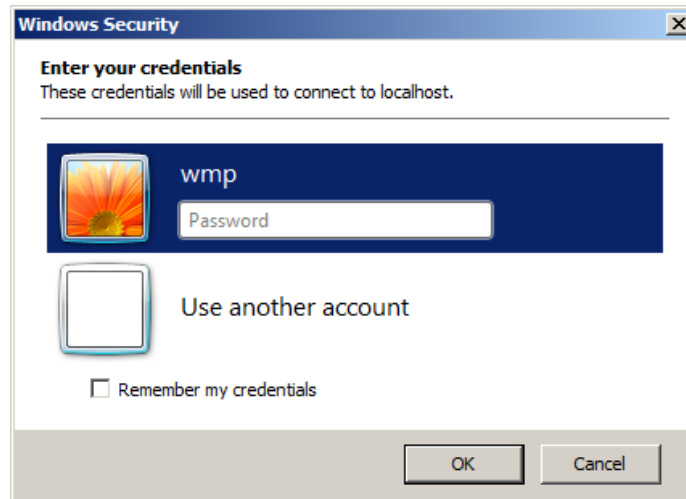
1. Click **Start** >> **All Programs** >> **Accessories** >> **Remote Desktop Connection** or
Click **Start** >> type **mstsc** in search field, then press **"Enter"**

In Windows 10

1. In the search field type **mstsc**, then press **"Enter"**



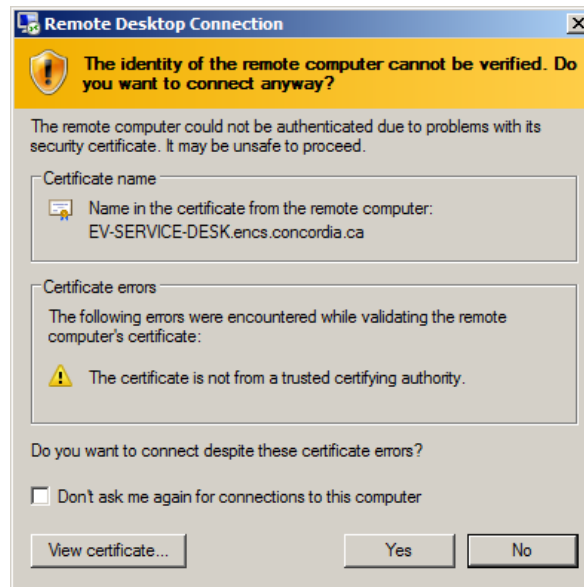
2. In **Computer** field: **localhost:3391**
3. Click the **Connect** button



4. Click **Use another account**



- If the machine in your office is **ENCS-managed** machine:
Enter **encs\ENCS-username and password**
- If the machine in your office is a **User-managed** machine:
Enter the **local** username and password of the machine.
For Example: **umroot** and the password



- Click **"Yes"**
Now the desktop screen of your office machine will show up.

III. On your home MAC machine

1. First download **Microsoft Remote Desktop** Client for MAC from the **App Store** in your MAC machine and install it.

The Apple ID and its password may be required to be entered

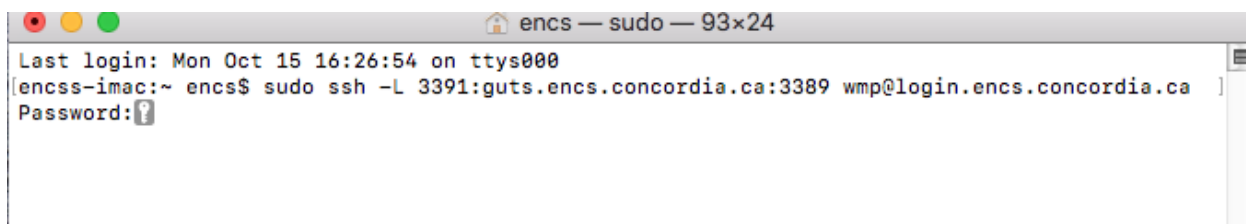
2. **Establish SSH Tunnel**

Open terminal in MAC and type the following command.

```
sudo ssh -L 3391:hostname.encs.concordia.ca:3389 encs-username@login.encs.concordia.ca
```

hostname is the machine name in your office

MAC password may be required to be entered



- Enter the **MAC user's** password


```
encs — ssh — sudo — 93x24
Last login: Mon Oct 15 16:26:54 on ttys000
[encss-imac:~ encs$ sudo ssh -L 3391:guts.encs.concordia.ca:3389 wmp@login.encs.concordia.ca ]
[Password: ]
wmp@login.encs.concordia.ca's password: [?]
```

- Enter your ENCS password

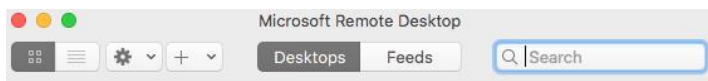
```
encs — ssh — sudo — 93x24
Last login: Mon Oct 15 16:26:54 on ttys000
[encss-imac:~ encs$ sudo ssh -L 3391:guts.encs.concordia.ca:3389 wmp@login.encs.concordia.ca ]
[Password: ]
wmp@login.encs.concordia.ca's password:
bind: Address already in use
channel_setup_fwd_listener_tcpip: cannot listen to port: 3391
Could not request local forwarding.
Last login: Sat Oct 13 16:14:01 2018 from 24.231.100.190
=====
Concordia University Faculty of Engineering and Computer Science

Unauthorized access is strictly forbidden.

For assistance: e-mail: servicedesk@encs.concordia.ca
For information: web: http://www.concordia.ca/encs/
=====
[poise] [/home/w/wmp] > █
```

The SSH tunnel has been established

3. Launch **Microsoft Remote Desktop** for MAC

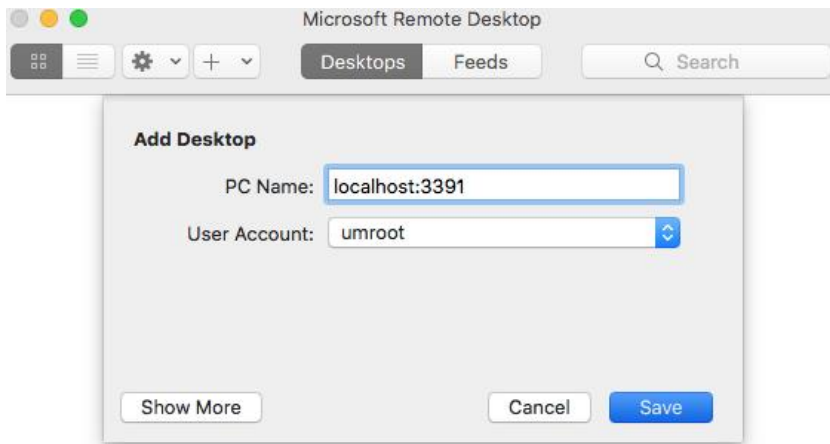


Add your first desktop connection to get started.

Add desktop



- Click the **“Add desktop”**



Add your first desktop connection to get started.

Add desktop



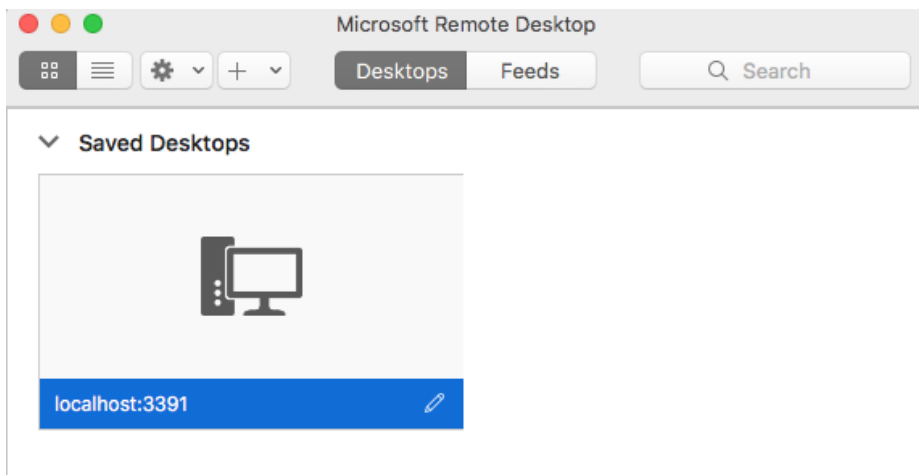
In **PC name** field: **localhost:3391**

In **User Account** field:

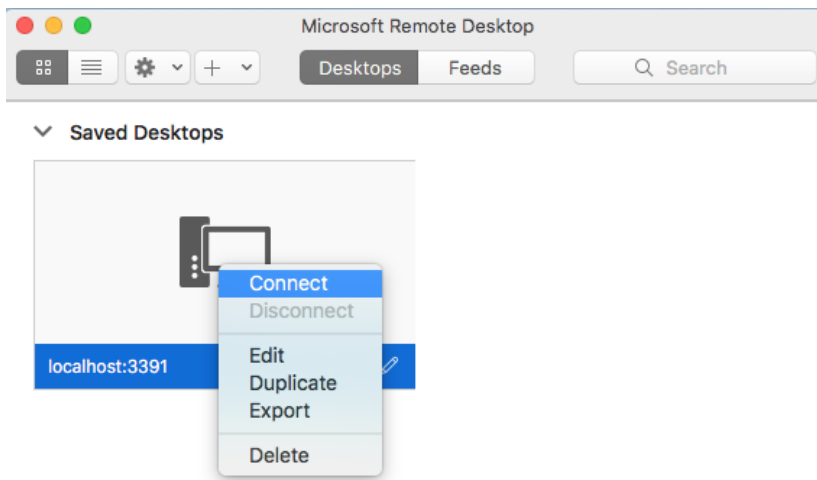
If the machine in your office is **ENCS-managed** machine:
Enter **encs\ENCS-username**

If the machine in your office is **User-managed** machine:
Enter the local username.
For Example: **umroot**

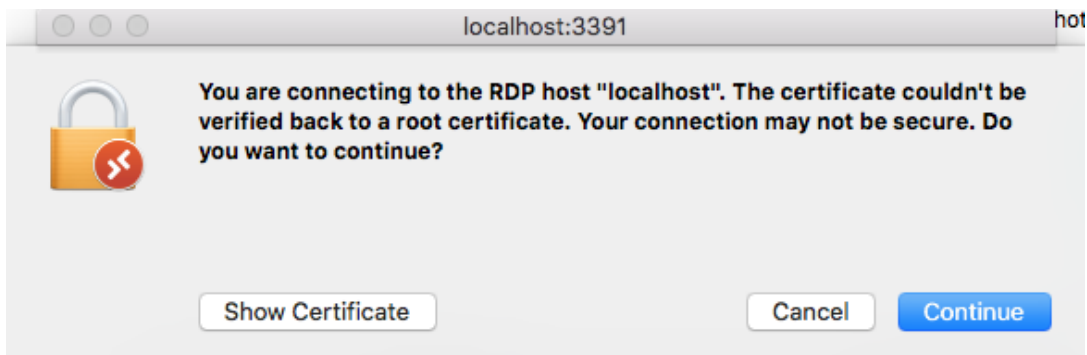
- Click **Save**



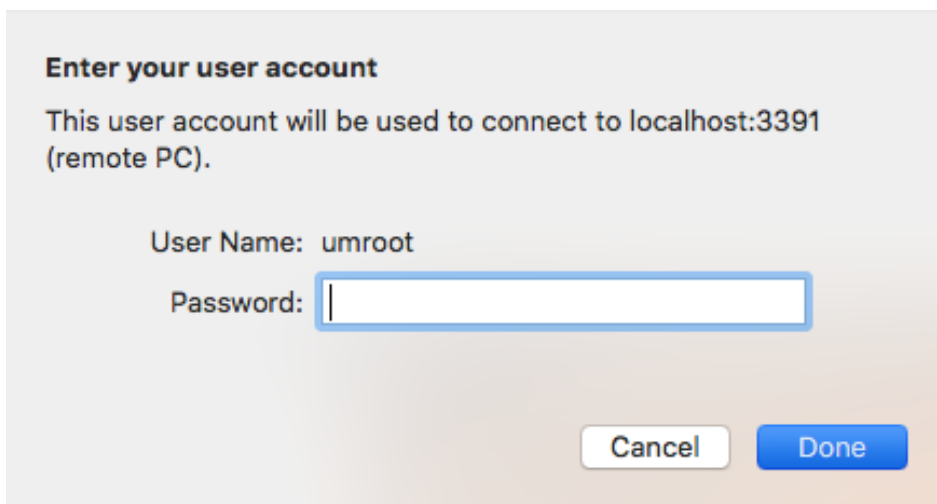
- Right click the image



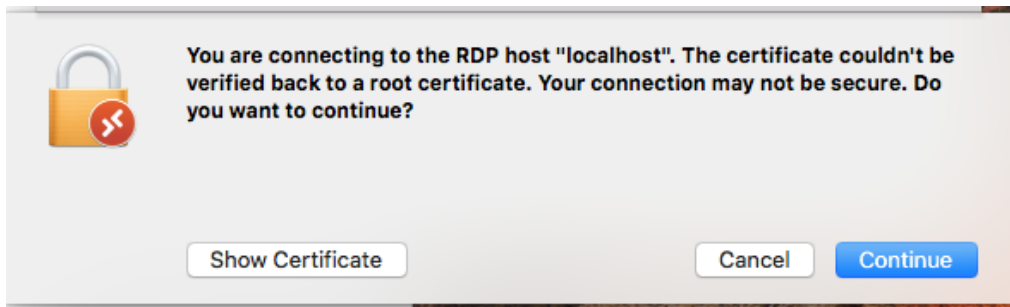
- Select **Connect**



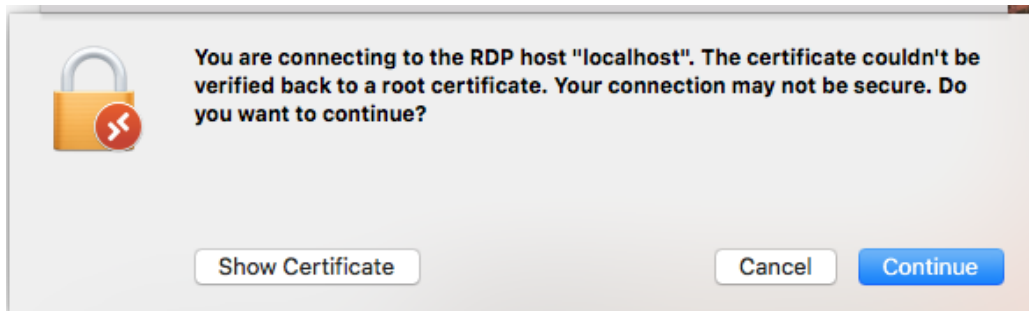
- Click **Continue**



- Enter your account's password, then click **Done**



- Click the **Continue**



- Click **Continue**

The Desktop screen of your ENCS office machine will be displayed.