



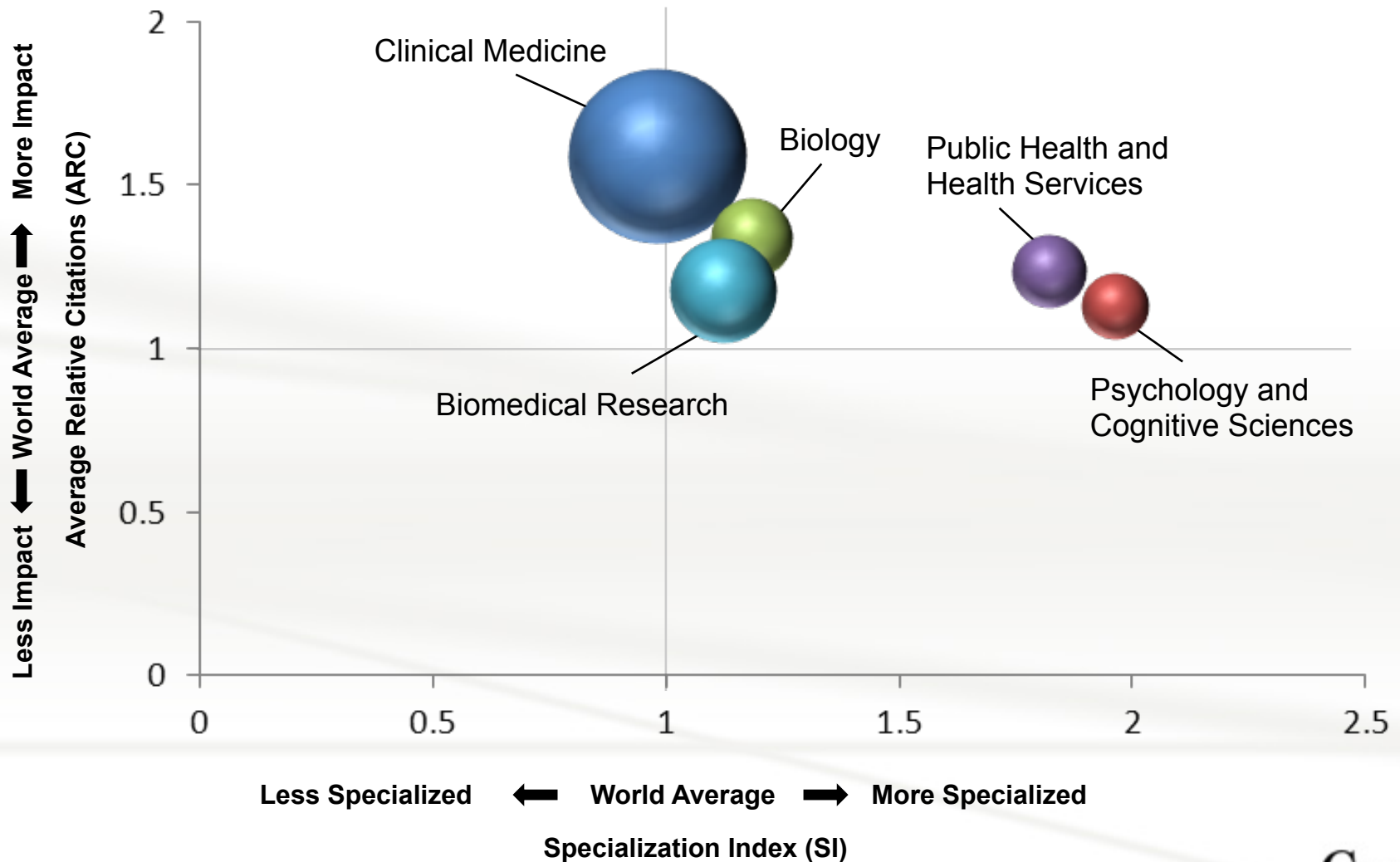
# **Perspectives on the Changing Nature of Research in Canada**

**Alain Beaudet, MD, PhD, President  
Canadian Institutes of Health Research**

Concordia University  
April 14, 2015

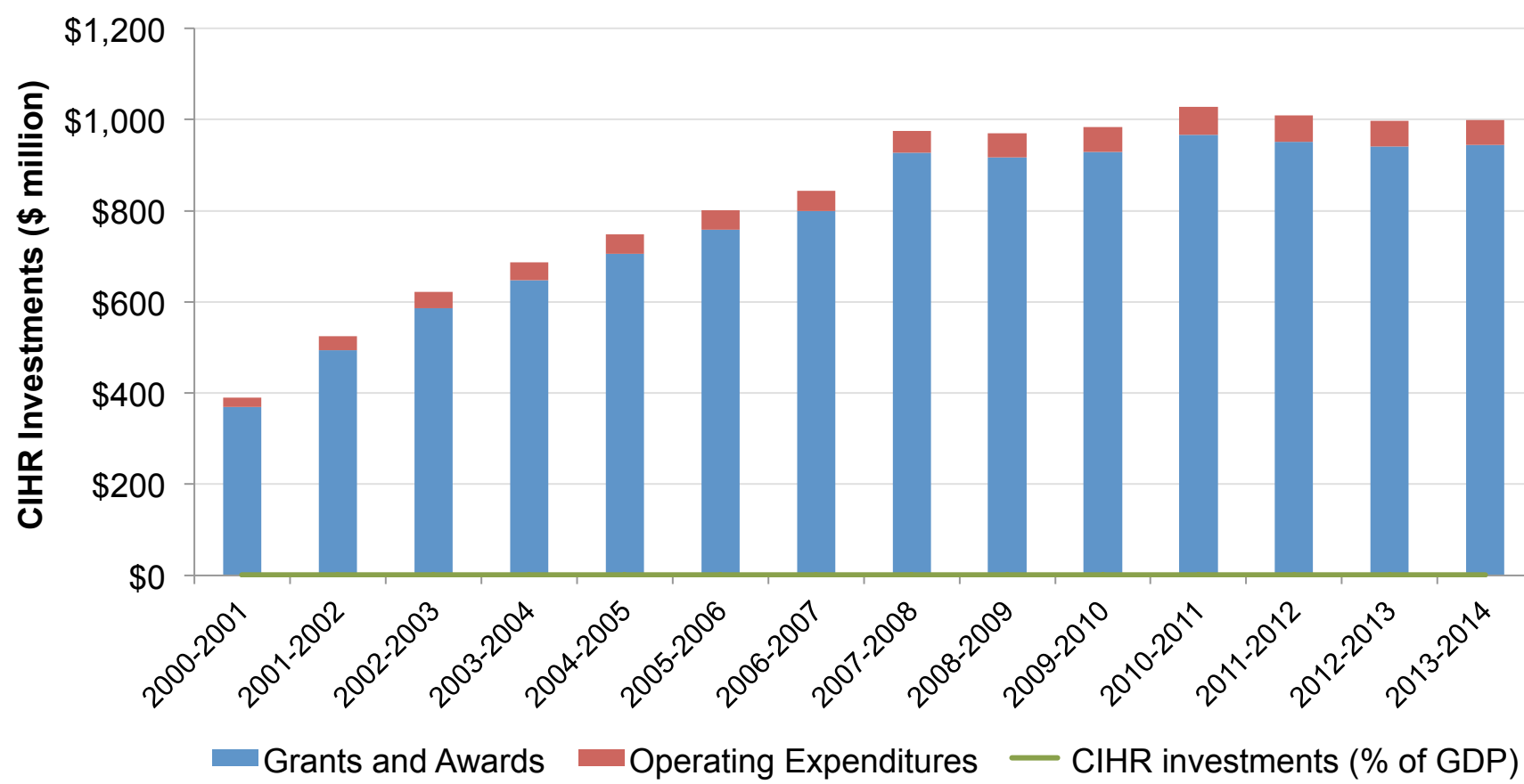
# Canada punches above its weight in health research

Canada's Positional Analysis by field of study (2005-2010)



## CIHR's budget has remained relatively stable

Since 2007-2008, CIHR's annual budget has remained relatively stable (at approximately \$1 billion)

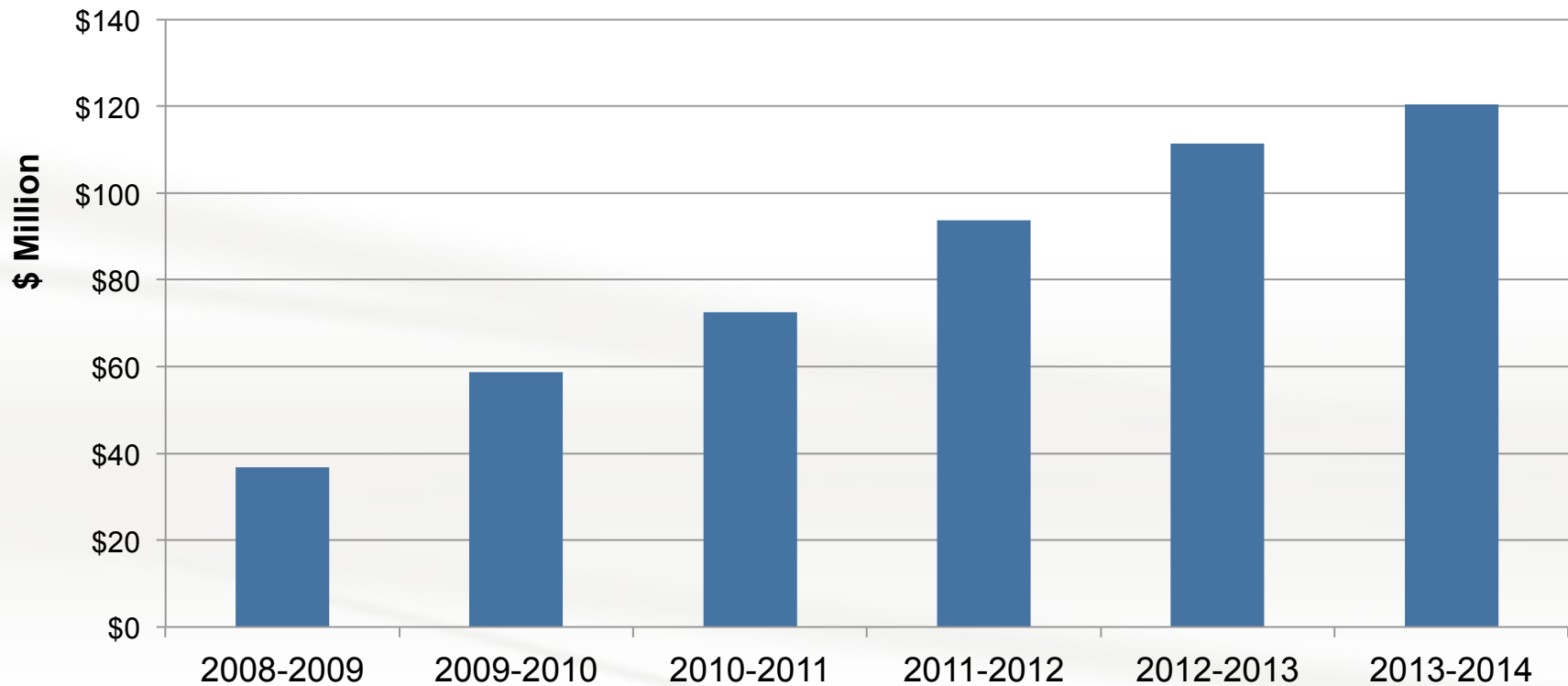


## How to grow CIHR's budget in a period of fiscal restraint?



## CIHR has partly compensated its flat lining through investments from external partners

### CIHR's leveraged funds from formal partnership agreements (constant 2008-2009 \$)



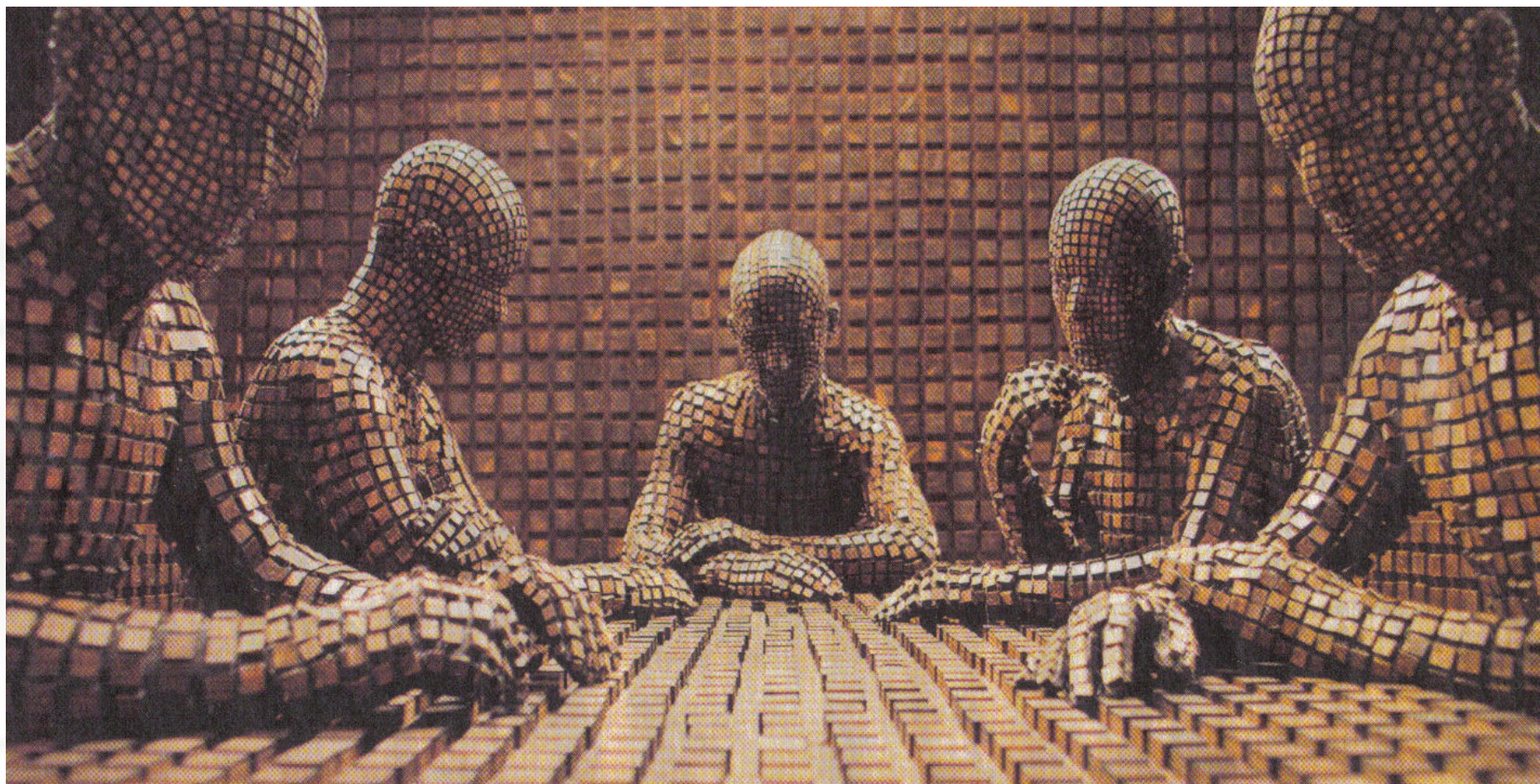
# Roadmap II: promoting excellence, creativity and breadth through investigator-initiated health research



- Supporting **investigator-initiated** ideas and research, from discovery to application
- Promoting **interdisciplinary and intersectoral** research (32% increase since 2007)
- Ensuring the sustainability of the health research enterprise through the development of a national vision to position **trainees** for success in both academic and non-academic careers



# Improving the effectiveness, consistency, fairness or peer review decisions

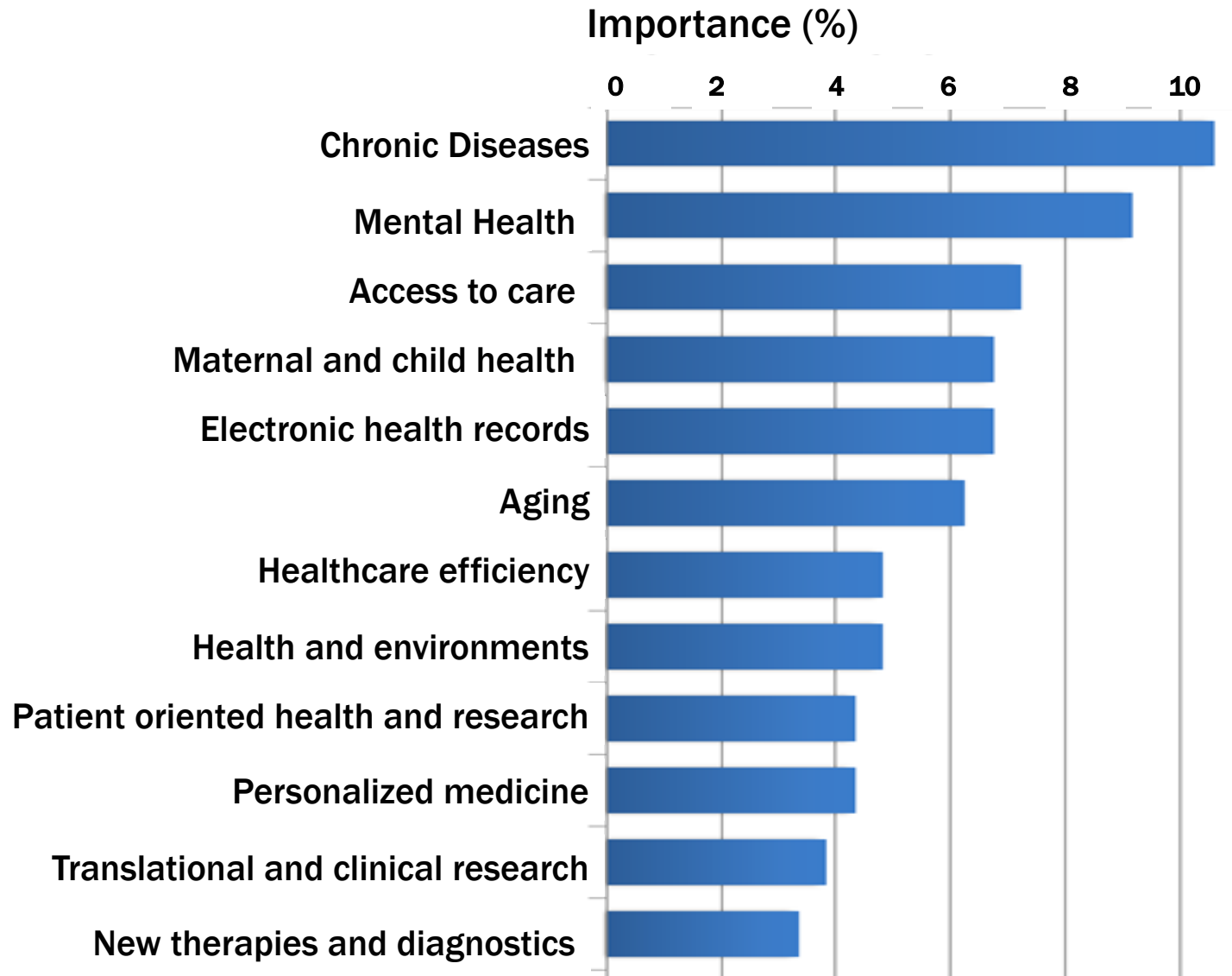


# Roadmap II: mobilizing health research for transformation and impact

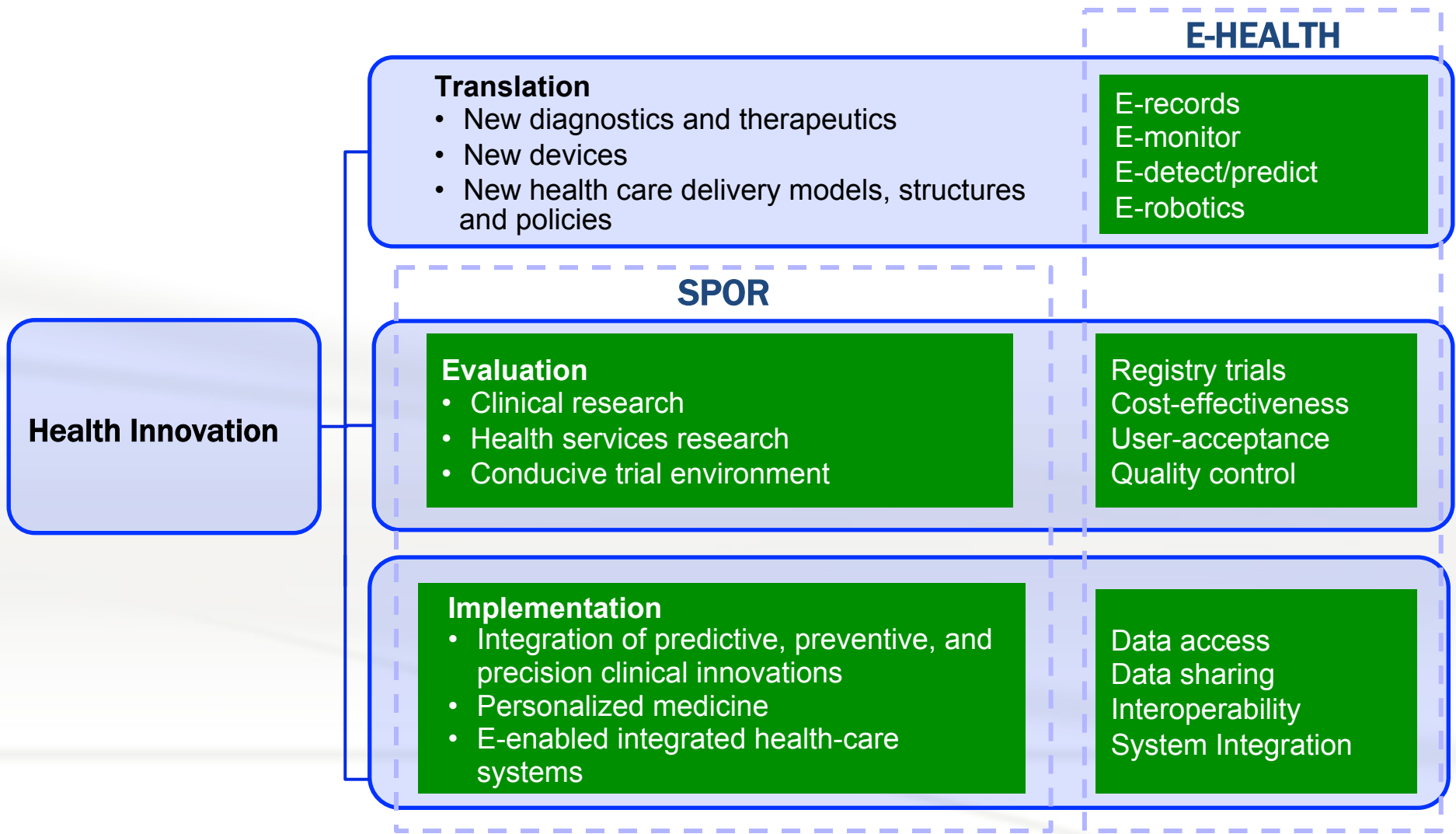


- Maximizing the health, social and economic **impact** of research through targeted priority-driven initiatives
- **Focusing** on issues critical for the health and welfare of the Canadian population
- Fostering **multidisciplinary** approaches to address complex research questions
- Forging **strategic alliances** with research users and policy makers

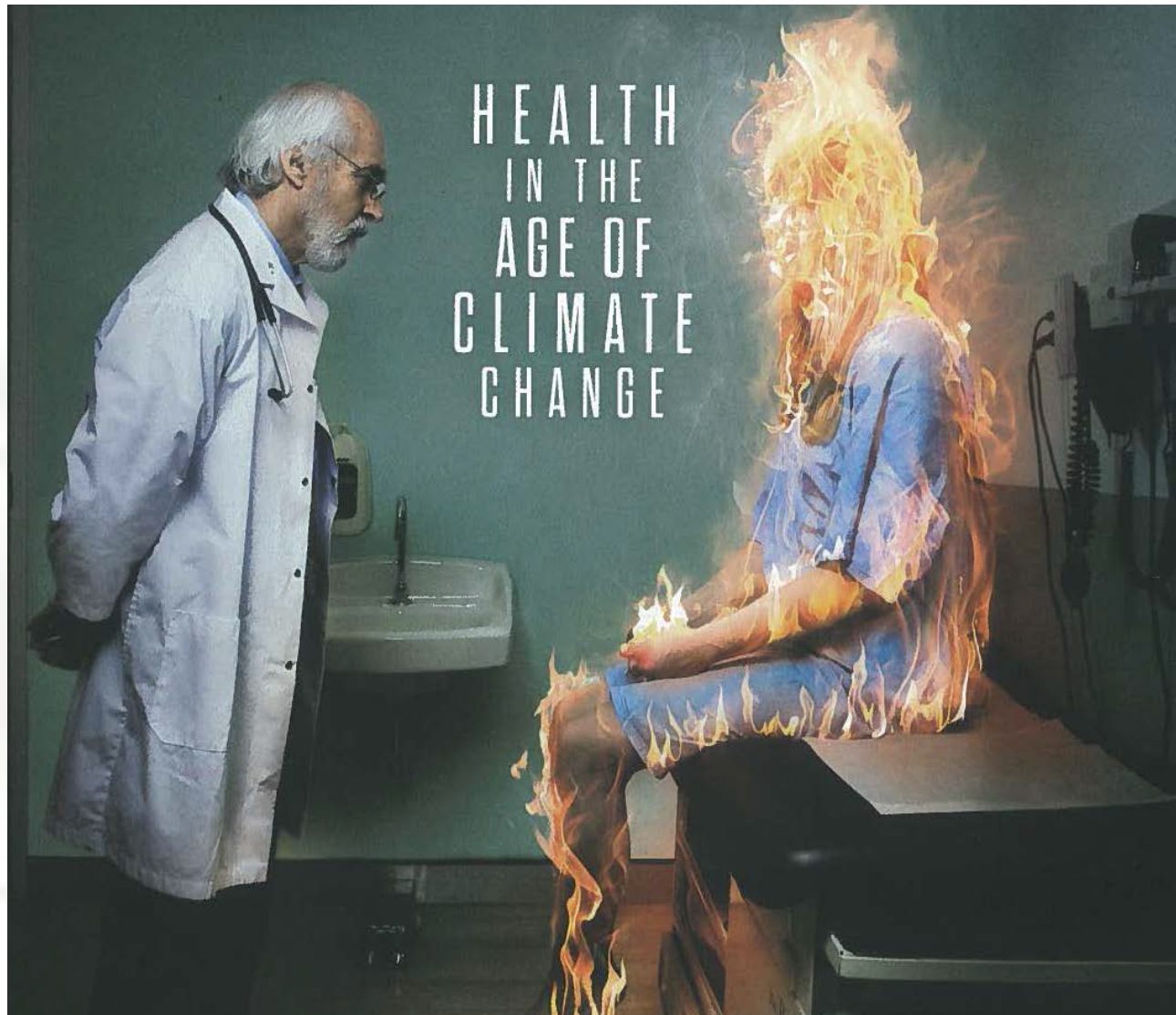
## Facing common health challenges: priorities of the world's major research organizations



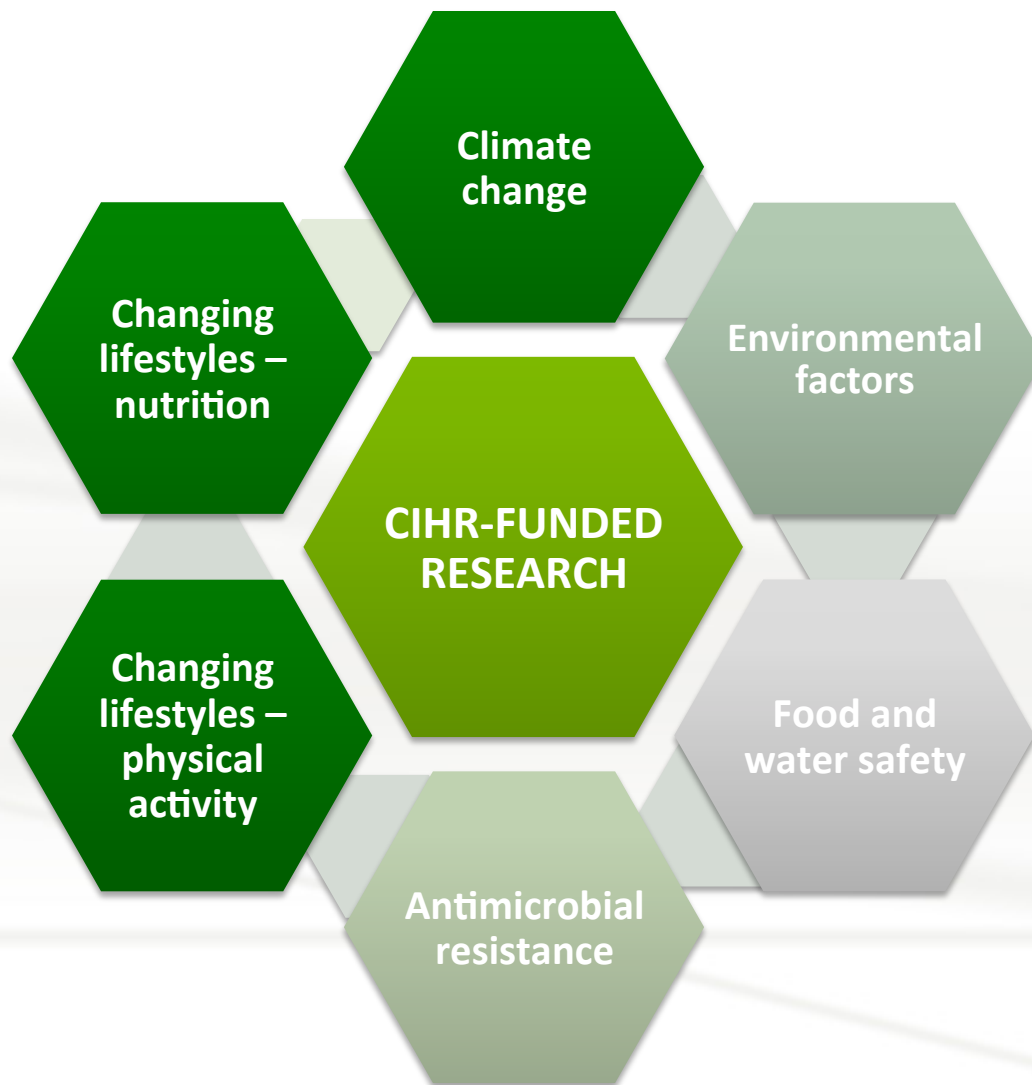
# SPOR: at the heart of CIHR's health innovation strategy



## Addressing social and environmental determinants of health

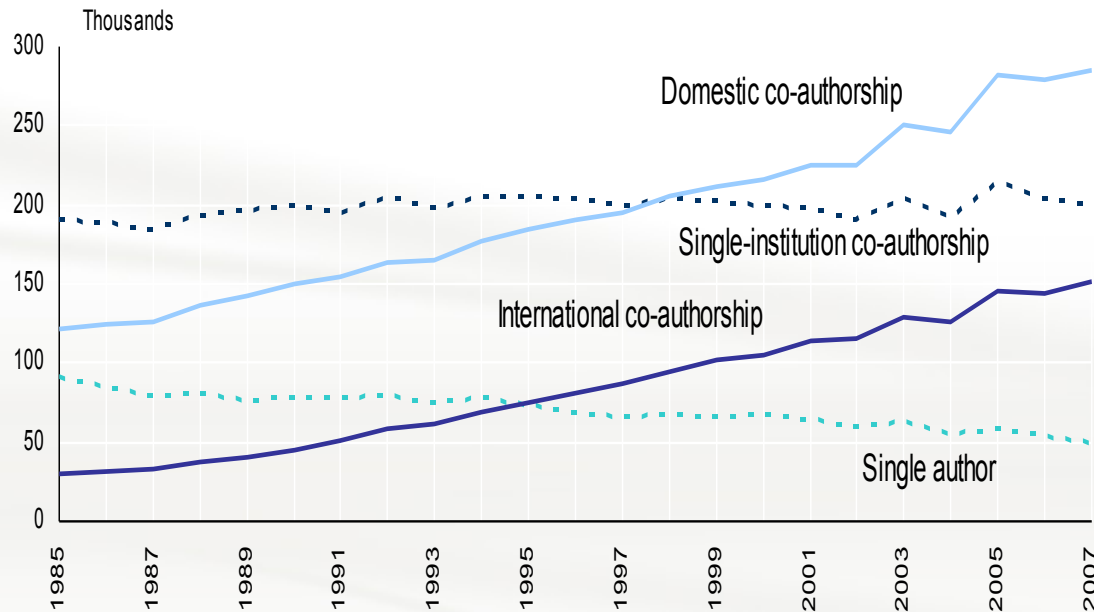


# CIHR contributes to research in key areas related to sustainable development and health



# International research collaborations have become essential

## Trends in co-operation on scientific articles (1985-2007)



- Science has become **international in scope**
- International collaborations have been shown to improve the **quality and impact** of scientific production
- Critical for addressing **issues of global concern** (e.g. Ebola, anti-microbial resistance, dementia, diabetes)

*“Big Data is like teenage sex;  
everyone talks about it, nobody  
really knows how to do it, everyone  
thinks everyone else is doing it, so  
everyone claims they are doing it.”*

Dan Ariely, Duke University Director of the Center for Advanced  
Hindsight

# Positioning the next generation of health researchers for success in the global research enterprise

- Need to provide training that prepares graduate students and postdoctoral researchers to participate in a broad-based and evolving economy and not only for academic positions
- Development of a **National Training Strategy**
- Development of a **SPOR Capacity Development Strategy** that will:
  - support collaborative, inter-professional research and training
  - provide attractive, sustainable career paths for those engaged in patient-oriented research
- Development of an **Aboriginal Mentorship** program

