



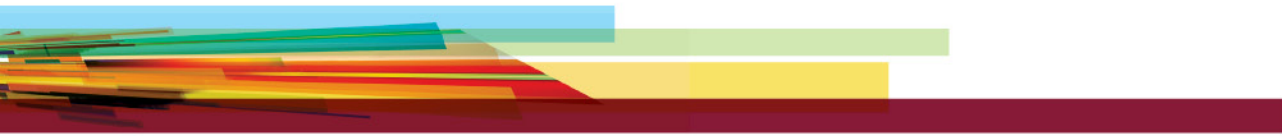
# Graduate Orientation Meeting Department of Exercise Science

August 30<sup>th</sup>, 2017

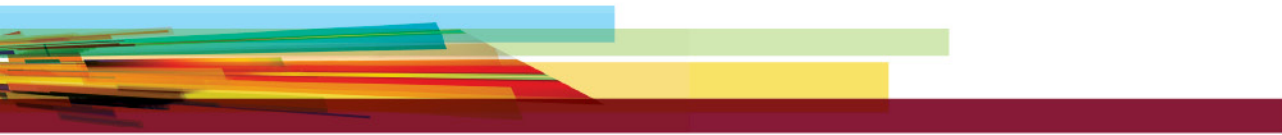


# Meeting Agenda: 10-11 am

- Welcome to 1<sup>st</sup> year students and Introductions
  - Richard Courtemanche: Chair of Dept. of Exercise Science
  - Véronique Pepin: Graduate Program Director (GPD)
  - Liz Fradette: acting Graduate Program Assistant (GPA)
- Overview of the role of GPA
- Overview of the role of GPD
- Program overview (M.Sc.)
- Responsibility of the students
- Meet the professors
  - Drs. Bacon, Alberga & Dover, and Darlington



**Welcome**



# Introductions

# Roles of Graduate Program Assistant

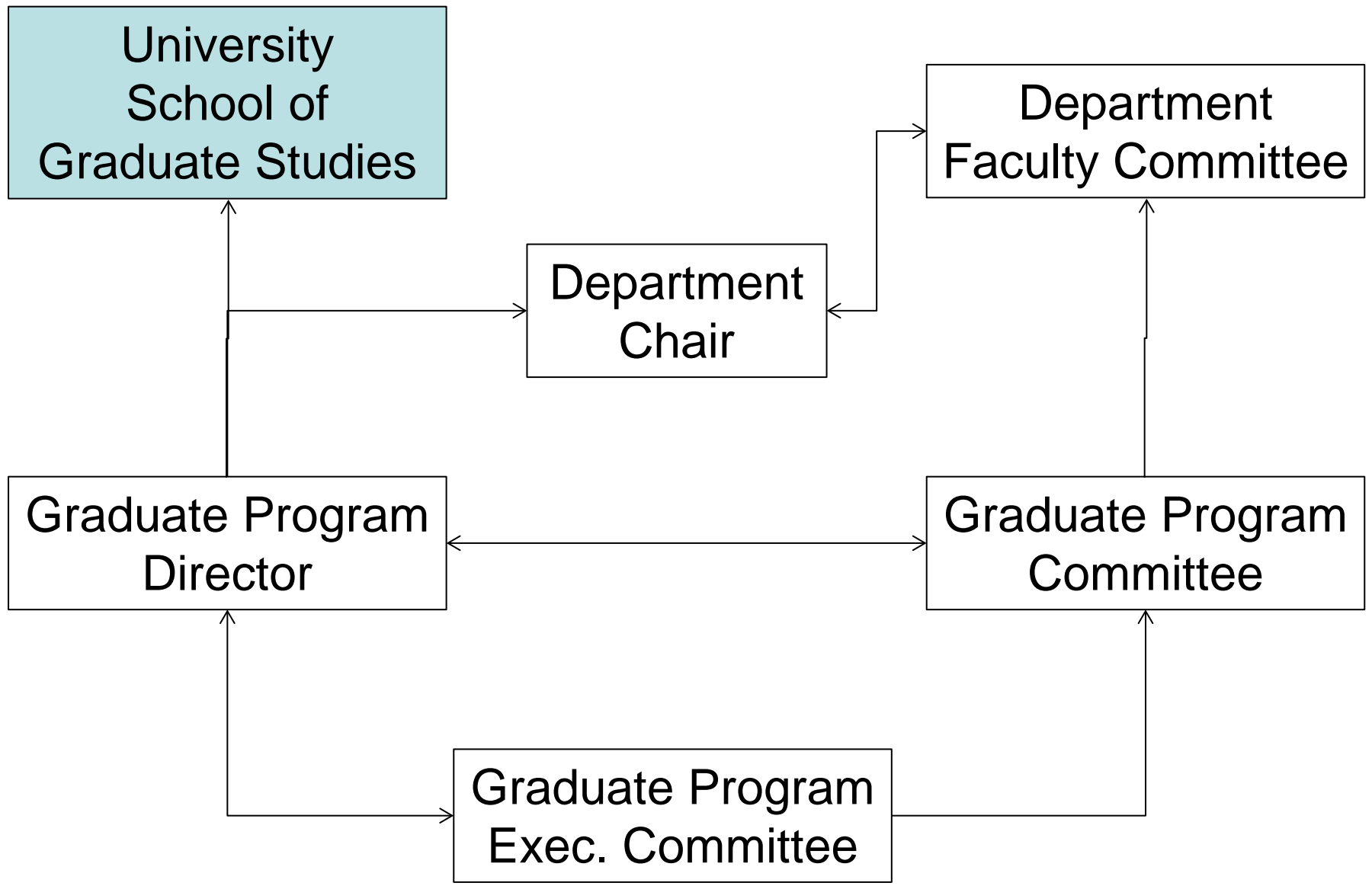
- Assists with:
  - Registration for courses
  - Progress reports for students and supervisors
  - Graduate awards
  - Student requests (i.e., leave of absence, withdrawal from program, etc.)
  - Student conference travel grants and expense claims
  - Access cards

# Roles of the Graduate Program Director

- Chairs the departmental committee for graduate admissions and/or policy
- Coordinates admission decisions/ recommendations
- Serves as the primary contact/liaison with SGS
- Ensures that **students** are matched with supervisors and supervisory committees
- Coordinates nominations for **fellowships, scholarships and awards**
- Instructs **students** and informs department about University deadlines, policies and procedures

# Roles of the Graduate Program Director

- Develops, documents and upholds department **policies**
- Reviews the academic progress of graduate **students**
- Makes recommendation on **student** requests
- Coordinates the development of graduate **courses**
- Coordinates the development of new programs and/or curriculum changes
- Checks **graduation lists**
- Mediates in problematic situations involving **students** and faculty





# Moodle site

## Exercise Science Graduate Student Information

Home ► My courses ► FRADETTE, ELIZABETH

### Messages

No messages waiting  
[Messages](#)

### People


 [Participants](#)

### Settings

▼ Course administration

 [Grades](#)

▼ Switch role to...

 [Return to my normal role](#)

► My profile settings

 [News forum](#)

### Current list of students

Details all MSc, PhD, and postdoctoral fellows associated with the Department

 [Current student list](#)

### Policies

List of current policies and procedures which have been agreed upon

-  [Exercise Science Graduate Calendar](#)
-  [GPC membership and TOR](#)
-  [TA priority ranking](#)
-  [Procedure for ranking students for awards](#)

### Timelines

 [Student admissions and awards timeline](#)

### Potential policies and procedures

Current discussion items around policies and procedures

 [Current entrance requirements](#)

### GPC Agenda's and Minutes'

Agenda's and minutes from GPC meetings

-  [Agenda - February 28th 2014](#)
-  [Agenda - January 10th 2014](#)
-  [Agenda - December 6th 2013](#)

# Moodle site

- Timeline
- Policies
- Forms for students
- General info
  
- Upload applications for funding
  
- Any additions – please let me know

# Program overview – 45 Credit program

## Year 1

- EXCI 610 – Statistics and Research Design (3 cr.): **Fall**
- EXCI 624 – Special Topics Seminar (3 cr.): **Fall**
- EXCI 612 – Laboratory Techniques (3 cr.): **Winter**
- EXCI 626 – Thesis Proposal (3 cr.): **See timeline**

## Year 2

- EXCI 680 (AT) or 690 (CEP) – Thesis (33 cr.)

<http://graduatestudies.concordia.ca/publications/graduatecalendar/current/fasc/exci.php>

# EXCI 626: Thesis proposal

- Regular meetings with supervisor as of September
- First form to be completed by student and supervisor must be uploaded onto Moodle by:
  - **Friday 15<sup>th</sup> September 2017, 4 pm**

***“Rien ne sert de courir ; il faut partir à point”***

(slow and steady wins the race)

- Jean de La Fontaine (Le Lièvre et la Tortue) -

# EXCI 626: Timeline

- September
  - Discuss possible research areas and start reading literature
  - **September 15<sup>th</sup>: submit signed EXCI 626 (thesis proposal) course outline**
- October – November
  - Identify potential questions, study designs, measures
- December
  - Identify specific research question/s starts to write the literature review
- January
  - Write introduction, hypothesis, methods, and analysis section for thesis
  - **January 13<sup>th</sup>: submit signed thesis committee form**
- February
  - Submit first draft of entire proposal to supervisor for editing
  - **February 15<sup>th</sup>: hold first thesis committee meeting by this time**
- March – April
  - Work on revised drafts of proposal
  - **April 13<sup>th</sup>: last day to submit thesis proposal**
- April – May
  - Prepare oral presentation of thesis proposal
  - **May 31<sup>st</sup>: last day to orally present thesis proposal to advisory committee**

# Responsibility of the student in the program

- Ensure you have a conversation with your supervisor about:
  - Nature and frequency of contact
  - Timeline and goals for the masters
  - Funding
  - Role of co-supervisors / collaborators
  - Research ethics
  - Publications, including authorship
  - Intellectual property
  - Language training

# Meet the professors

- EXCI 610 – Statistics and Research Design
  - Dr. Bacon
- EXCI 624 – Special Topics Seminar
  - Drs. Alberga and Dover
- EXCI 612 – Laboratory Techniques
  - Dr. Darlington





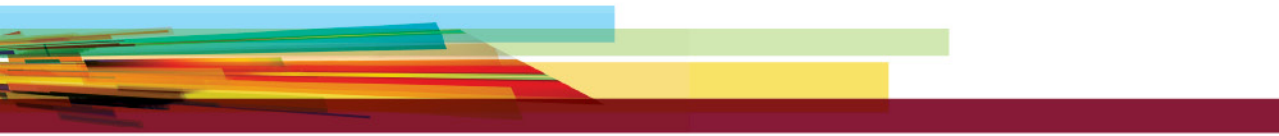
CONCORDIA.CA





# Meeting Agenda: 11 am-12 pm

- Welcome back to 2<sup>nd</sup> year students and introductions
- Important dates
- Funding information
- Other info
  - Grad proskills
  - Q and A
- GESSA Elections
- Lunch



# **Welcome back and Introductions**

**Key dates**  
**2017-2018 academic year**

August 30 <sup>th</sup>	Graduate Student meeting, 10:00-12:00, SP165.22 (all students)
September 1 <sup>st</sup>	Last day for final electronic submission of thesis through Spectrum, the Concordia Repository, for students who are graduating in the Fall Term
September 5 <sup>th</sup> :	Fall semester starts
September 15 <sup>th</sup> :	Deadline to submit signed EXCI 626 (thesis proposal) course outline (1 <sup>st</sup> year students only)
October 4 <sup>th</sup> :	Deadline for FRQ-NT Master's and PhD scholarship applications
October 11 <sup>th</sup> :	Deadline for FRQ-SC Master's scholarship applications
October 16 <sup>th</sup> :	Deadline for FRQ-S Master's and PhD scholarship applications
October 18 <sup>th</sup> :	Deadline for FRQ-SC PhD scholarship applications
October 27 <sup>th</sup> :	Deadline to apply for winter teaching assistantships (TA) 4:30 pm
December 1 <sup>st</sup> :	Deadline for Canadian Graduate Scholarships-Master's Program (CIHR, NSERC, SSHRC)
December 4 <sup>th</sup> :	Last day of classes Fall semester
<hr/>	
January 8 <sup>th</sup> :	Winter semester begins
January 13 <sup>th</sup> :	Deadline for 1 <sup>st</sup> year students to submit their signed thesis committee form
January 31 <sup>st</sup>	Deadline for Internal Endowed Awards (entrance, ie students that just start or in-course)
February 1 <sup>st</sup> :	Deadline for Internal scholarship applications
February 15 <sup>th</sup> :	Deadline for 1 <sup>st</sup> meeting of the year with your thesis committee
April 1 <sup>st</sup> :	Last day for master's thesis submission to the Thesis Office for students who have applied for Spring graduation
April 13 <sup>th</sup> :	Deadline for 1 <sup>st</sup> year students to submit their thesis proposal
April 16 <sup>th</sup> :	Last day of classes Winter semester
May 31 <sup>st</sup> :	Deadline for 1 <sup>st</sup> year students to present their thesis proposal
June 8 <sup>th</sup> :	Deadline to apply for Fall TAships 4:30 pm

# Important dates

Date	Event
September 15 <sup>th</sup>	Deadline to submit signed EXCI 626 (thesis proposal) course outline
October 27 <sup>th</sup>	Deadline to apply for winter teaching assistantships (TAs) and small awards
January 13 <sup>th</sup>	Deadline for 1 <sup>st</sup> year students to submit their signed thesis committee form
February 1 <sup>st</sup>	Internal scholarship application deadline
February 15 <sup>th</sup>	Deadline for 1 <sup>st</sup> meeting with thesis committee
March 4 <sup>th</sup>	Last day for first thesis submission to dept. GPA for Spring graduation
April 1 <sup>st</sup>	Last day for final electronic submission of thesis for Spring graduation
April 13 <sup>th</sup>	Deadline for 1 <sup>st</sup> year students to submit their thesis proposal
May 31 <sup>st</sup>	Deadline for 1 <sup>st</sup> year students to present their thesis proposal
June 8 <sup>th</sup>	Deadline to apply for fall teaching assistantships (TAs) in the department

# Thesis submission

- Examination Committee
  - Appointed in consultation with the supervisor
- Approval
  - Supervisor must approve the final document
- Submission guidelines
  - <http://www.concordia.ca/students/graduate/thesis/masters-thesis-process.html>
- Submission deadlines:
  - Final submission:
    - **April 1 for Spring Convocation**
    - **September 1 for Fall Convocation**

# Thesis oral defence

- Defence occurs 2-5 weeks after submission
- Chaired by someone who is not on the Examination Committee
- The defence should not exceed 90 minutes
- Candidate presents for 15-20 minutes
- Questions from the Examination Committee (normally there are 2 rounds)
- Questions from the other members of the University present

# Post defence

- Possible decisions
  - Accepted as submitted
  - Accepted with minor modifications
  - Accepted with major modifications
  - Rejected
- Thesis submission is complete once the final corrected version is uploaded into Spectrum
  - This influences when convocation occurs
  - Must apply to graduate by January 15 for Spring Convocation and by July 15 for Fall Convocation

# External funding

- Federal agencies
  - CIHR
  - SSHRC
  - NSERC
- Provincial agencies
  - FRQ – S
  - FRQ – SC
  - FRQ – NT
- Foundations
  - Heart and Stroke Foundation of Canada



# Federal agencies

- Masters
  - Unified system (CIHR/SSHRC/NSERC)
  - Application deadline – December 1<sup>st</sup>
  - [http://www.nserc-crsng.gc.ca/Students-Etudiants/PG-CS/CGSM-BESCM\\_eng.asp](http://www.nserc-crsng.gc.ca/Students-Etudiants/PG-CS/CGSM-BESCM_eng.asp)
- PhD
  - Vanier: 13<sup>th</sup> September (internal)
  - CIHR: 3<sup>th</sup> October (external)
  - NSERC: 13<sup>th</sup> October (internal)
  - SSHRC: 20<sup>th</sup> October (internal)

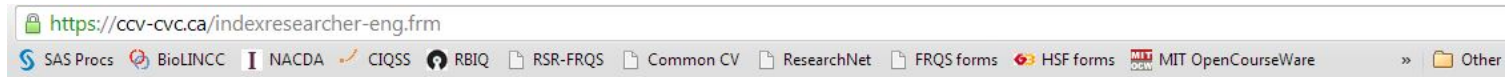
<http://www.concordia.ca/students/financial-support/graduate-funding/sources.html>

# Provincial agencies

- FRQNT
  - 4<sup>th</sup> October
  - <http://www.frqnt.gouv.qc.ca/>
- FRQSC
  - 11<sup>th</sup> October (18<sup>th</sup> October for PhD)
  - <http://www.frqsc.gouv.qc.ca/>
- FRQ-S
  - 16<sup>th</sup> October
  - <http://www.frqs.gouv.qc.ca/>

<http://www.concordia.ca/students/financial-support/graduate-funding/sources.html>

# Canadian Common CV



**Canadian Common CV**  
www.ccv-cvc.ca

<a href="#">Français</a>	<a href="#">Home</a>	<a href="#">Contact Us</a>	<a href="#">Help</a>	<a href="#">Logout</a>		
<a href="#">Welcome</a>	<a href="#">CV</a>	<a href="#">History</a>	<a href="#">Consent</a>	<a href="#">Transfer</a>	<a href="#">PIN</a>	<a href="#">Account</a>

2013-08-28 17:07 EST

<a href="#">Overview</a>	<b>*** IMPORTANT NOTICE ***</b>
<a href="#">News</a>	The CCV application has been redeveloped. If you had an account on the old CCV application you can access the new application by using your previous username and password. However the following need to be done as soon as you log in:
<a href="#">Members</a>	<ul style="list-style-type: none"><li>• Change your password (if required) to meet the new security guidelines</li><li>• Change your reminder questions and answers. On top of a predefined list of questions you can now add your own question. Note that this is an important step as you will be asked to answer the chosen questions if you ever forget your username or password in the future. It is recommended to use a question/answer pair that can easily be remembered.</li><li>• Verify all your CV data. During the development process CV data was migrated, wherever possible, from the old to the new application. You need to make sure that the data was properly migrated by inspecting each section and field. Any missing or wrongly formatted data will have to be corrected. For your convenience the old CCV application will be available until further notice, for you to retrieve any data at <a href="http://www.ccv-cvc-2004.ca">www.ccv-cvc-2004.ca</a>.</li></ul>
<a href="#">How-To</a>	
<a href="#">Webinars</a>	
<a href="#">Glossary</a>	
<a href="#">Migration</a>	
<a href="#">Documentation</a>	
<a href="#">Release Notes</a>	
<a href="#">FAQ</a>	

Modified: 2013-07-22\_CCVPRODUCTION

[Top of Page](#)

[Important Notices](#)

# Internal Funding

- SGS conference funding
  - \$250-750
  - Multiple deadlines throughout the year
- Other awards
  - Sellars
  - Zweig
- **Look out for regular announcements sent via GPD/GPA for application procedure and deadlines**
- Workshop: GPLL466 - Funding Opportunities for Graduate Students in Thesis-based programs

[http://www.concordia.ca/students/gradproskills/workshops/details.html?subject\\_area=GPLL&catalog\\_number=466](http://www.concordia.ca/students/gradproskills/workshops/details.html?subject_area=GPLL&catalog_number=466)

# Awards process for the coming year – In-course

- Deadline for applications
  - **February 1<sup>st</sup> 2017, 4 pm**
  - To be uploaded on moodle
- Eligibility
  - Applied by the deadline
  - Within normal residency (e.g., within 2 years for Masters)
  - Completed the 12 required course credits for Masters
  - On track with INDI PhD studies if applicable

# Last Year's Awards Criteria

Element	Definition	Weighting
GPA	GPA used to assess eligibility to the programme plus current GPA in programme	40 %
Research experience	Current research progress made in programme with details of specific measurable milestones completed	15 %
Research measurable outcomes	Publications, conference presentations. Greater weighting for 1 <sup>st</sup> author vs. co-author contributions	30 %
Accomplishments	Previous awards based on academic ability, e.g., presentation awards, scholarships. Also non-academic achievements	10 %
Reference	The current supervisor must supply a letter detailing the student's standing within the lab, notable achievements during their time in programme (and putting them in context), and areas where the student needs to improve	5 %

Graduate Awards Details: In-course students  
Department of Exercise Science

- 1) Name:
- 2) Student ID:
- 3) Email address:
- 4) Date:
- 5) Supervisor:
- 6) Current program and year started:
- 7) Degrees and GPAs (including current GPA):

Degree	Institution	Dates	GPA

- 8) Current guaranteed funding (funder, value, and dates covered). This includes TAs and monies received from your supervisor:

Funder	Competition	Dates covered	Total value

- 9) Funding applications submitted and waiting for answers (funder, value, and dates covered). This includes TAs and small research awards:

Funder	Competition	Dates covered	Total value

- 10) Previous graduate funding received (funder, value, and dates covered):

Funder	Competition	Dates covered	Total value

# TA ranking

- There is no guarantee that any specific person will get a TA
- Applications deadlines
  - **June 8<sup>th</sup> for Fall**
  - **October 27<sup>th</sup> for winter**
- Ranking
  - To provide an order where there is competition for places
  - Department need and student expertise may supersede ranking



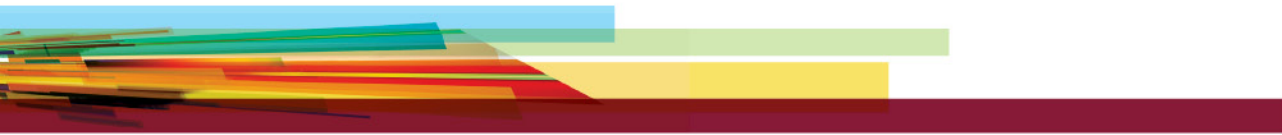
# TA ranking

- Criteria
  - Does not have internal or external awards or scholarships (accumulated funding for the coming year of greater than \$7,000)
  - Is currently in normal residency for the programme (i.e., 1st and 2nd year students)
  - Within 2nd year students, has completed the 4 core Master's courses.
  - Graduate GPA for 2nd year students and UG GPA for 1st year students

NB: \$7,000 is the limit as this is higher than the max of a years TAing. Also, internal or external funding is considered to be awards given by the University or external agencies (this does not include supervisor funding).

# Other information

- Submission for a PhD program
  - Waiting for feedback from the BCI
- Gradproskills
  - <http://graduatestudies.concordia.ca/gradproskills/>
- Department lecture series
  - On **Fridays at lunchtime (12-1pm)**
  - Schedule will be announced in EXCI 624



# General Q and A

# GESSA Elections

- Faculty committee
  - 1 representative
- Graduate programme committee
  - 1 representative from the masters programme
  - 1 other representative from masters, PhD, or Postdoc



CONCORDIA.CA

