



# EXPLORE CONCORDIA

## SELF-GUIDED TOUR OF LOYOLA CAMPUS

The **Loyola Campus** blends cutting-edge facilities with turn-of-the-century buildings in the beautiful west-end neighbourhood of Notre-Dame-de-Grâce. Students commute between the two campuses via our shuttle bus, a seven-kilometre ride that takes about 30 minutes.

### GETTING TO LOYOLA

The Loyola Campus is located at 7141 Sherbrooke St. W.



**By car:** Turn north off Sherbrooke Street onto West Broadway Street and then into the parking lot. Parking is six dollars for the day.



**By public transit:**



- 1) Take the metro to Vendôme station, then catch the 105 Sherbrooke bus heading west.
- 2) Take the metro to Villa-Maria station, then catch the 162 bus heading west.
- 3) Take the metro to Snowdon station, then catch the 51 bus heading west.

*Please note: Most departments and offices are open on weekdays only.*

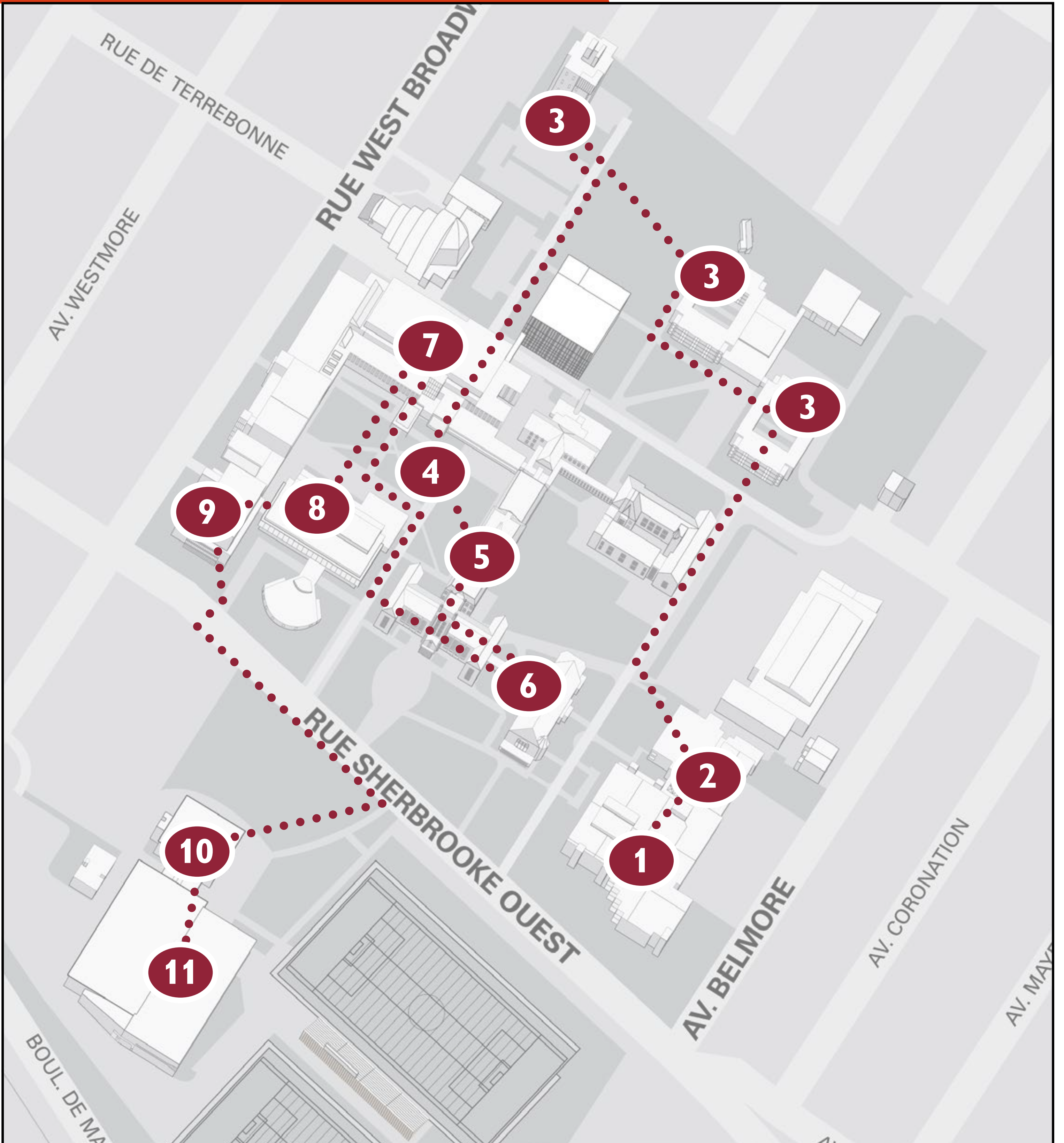
*Access to some buildings, including residence, is limited to Concordia students*

*and staff. Our student guides would be happy to show you around. To book a tour:*

*514-848-2424, ext. 4779 [tours@concordia.ca](mailto:tours@concordia.ca) [concordia.ca/welcome-centre](http://concordia.ca/welcome-centre)*

### LET'S BEGIN!

# LOYOLA CAMPUS MAP



# 1 **GEORGE P. VANIER LIBRARY (VL)** [↗](#)

The **Georges P. Vanier Library** is open 24 hours a day in the fall and winter terms. Facilities include spaces for silent study and collaborative spaces for group work.



**OUR HISTORY** – The Jesuits, with their long history as educators and missionaries, established Loyola College in 1896. The College found a home in Notre-Dame-de-Grâce 20 years later. Loyola College merged with Sir George Williams University in 1974 to form Concordia University.



2

## OSCAR PETERSON CONCERT HALL (PT) [↗](#)

The **Oscar Peterson Concert Hall** was named in honour of one of the best jazz pianists of all time. Peterson, a Montreal native, was awarded an honorary doctorate and the Loyola medal, the University's highest honour. The 570-seat performance venue hosts more than 200 shows a year, many with internationally-renowned artists. The **Student Centre (SC)** is home to a student-run café, a lounge and study spots.



### 3 HINGSTON RESIDENCES (HA/HB) / JESUIT RESIDENCE (JR) [↗](#)

**Hingston Hall** and the **Jesuit Residence** are home away from home for the hundreds of Concordians who live on campus. Note: This space is not open for campus visitors.



4

## OUTDOOR LANDSCAPES



The **Quad** is an expansive green space where students relax between classes on warm days. Frosh activities, barbecues and outdoor concerts take place here.



## 5 ADMINISTRATION (AD) / CENTRAL BUILDING (CC)

The **AD** and **CC** Buildings house **Health Services**, the **Loyola College for Diversity and Sustainability**, **Counselling and Development** (for personal, educational and career counselling), the **Access Centre for Students with Disabilities** and the **Multi-Faith and Spirituality Centre**.



**HELPFUL TIP** – If you have classes on both the SGW and Loyola campuses, you can commute between the two using our free shuttle bus, which takes about 30 minutes. You'll need to show your Concordia ID to board the shuttle!



## 6 F.C. SMITH AUDITORIUM / LOYOLA CHAPEL (FC) [↗](#)

The Loyola Chapel is a beautiful, quiet place available to people of all faiths. Students use the **F.C. Smith Auditorium** for theatrical productions and workshops. Concerts and other events take place at The Cazalet Theatre.





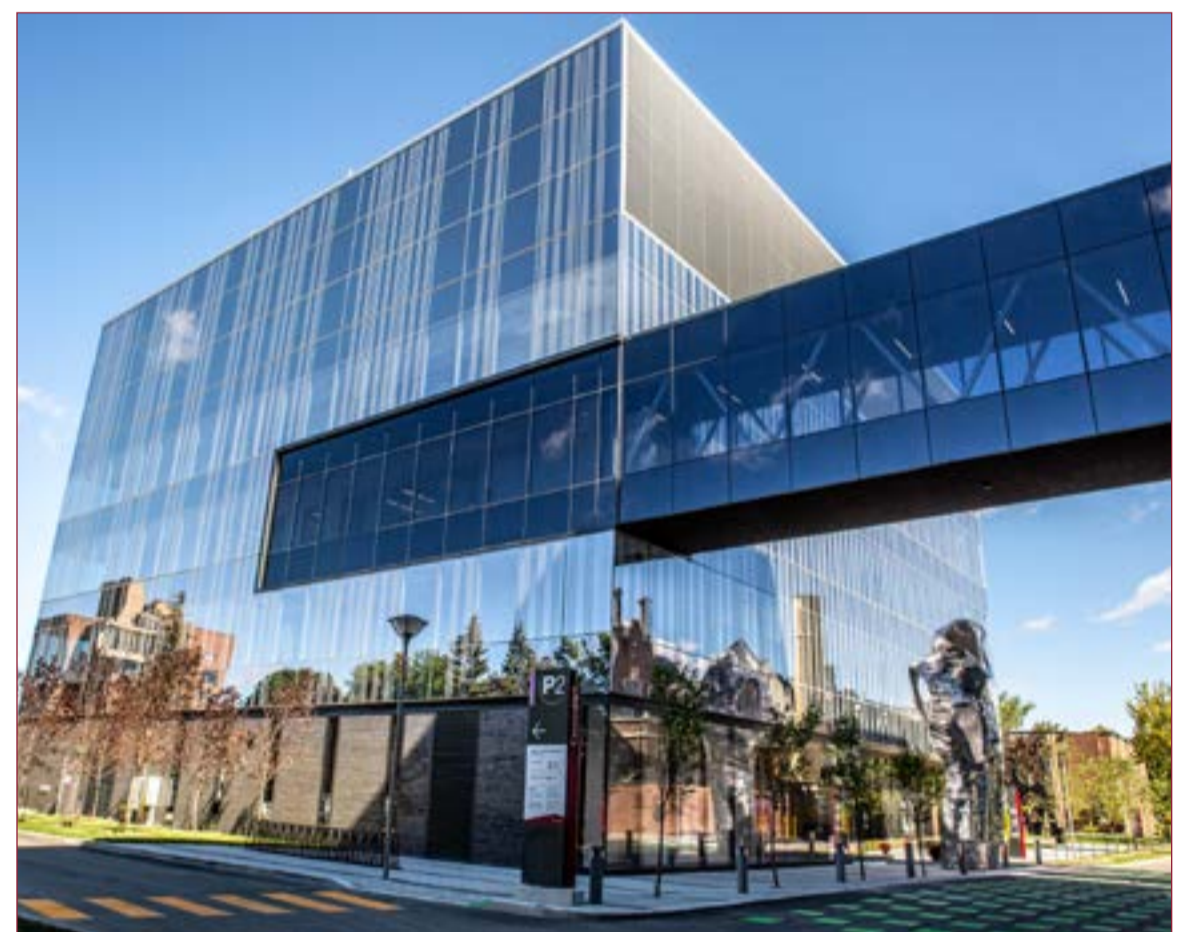
## 7 RICHARD J. RENAUD SCIENCE PAVILION (SP) AND APPLIED SCIENCE HUB (HU) [↗](#)

The [Richard J. Renaud Science Pavilion](#) is the main building for students in biology, chemistry and biochemistry, physics, exercise science and psychology. It also houses the Science College, a specialized learning community dedicated to solving current problems through lab work and research.

The recently completed Applied Science Hub is Concordia's home for interdisciplinary scientific research, with labs for aquatic biology, microscopy, cellular imaging, nanoscience, bioprocessing, and chemical and materials engineering. It also hosts the District 3 Innovation Hub, a start-up incubator, promoting industry scale-up and partnership opportunities on-site.

### FEELING PECKISH?

Stop by the Hive Café in the SC Building or the G Lounge in the CC Building for a quick snack.



8

## COMMUNICATION STUDIES AND JOURNALISM BUILDING (CJ)

The **CJ Building** is where our Communication Studies and Journalism students take classes and make use of media labs, plus video production and editing suites. The **Concordia Bookstore** is also here.



Watch for some of the city's most memorable commercial signs on the walls of the CJ Building, part of the Montreal Signs project.



PHOTO: Raphaëlle Bob Garcia

9

## RESEARCH CENTRE FOR STRUCTURAL AND FUNCTIONAL GENOMICS BUILDING (GE)

The **Research Centre for Structural and Functional Genomics Building** is Concordia's largest multidisciplinary research centre, bringing together biologists, chemists and bioinformaticians.

**HELPFUL TIP** – Passageways on the second and third floors link the GE Building to the Science Pavilion. You can also take the tunnel at the basement level. Another tunnel links the GE and CJ Buildings.

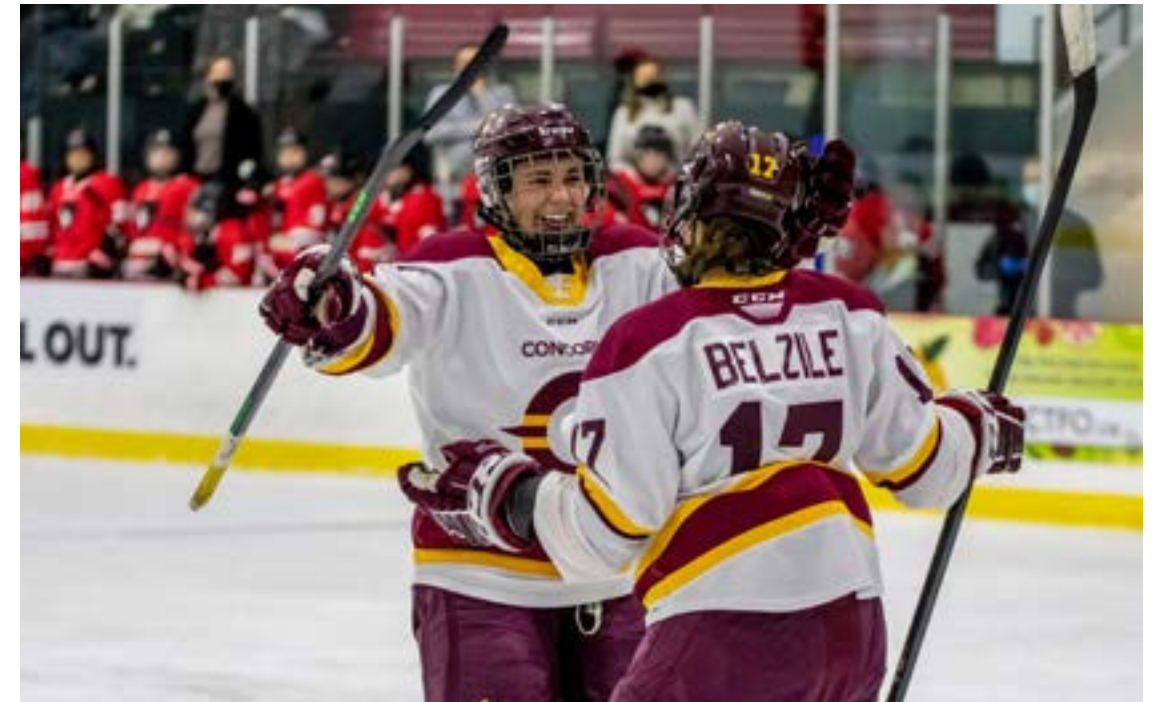


## 10 RECREATION AND ATHLETICS COMPLEX (RA) [↗](#)

The Recreation and Athletics Complex contains a gymnasium, an arena and a dome for our varsity athletes — the Stingers — to compete in football, basketball, hockey, rugby, soccer and wrestling.

The **Stinger Dome**, an air-supported structure, covers the field from November to April, so Concordians can join a game of soccer or Ultimate all year round.

The Stingers hockey teams play at the **Ed Meagher Arena**.



## 11 **PERFORM CENTRE (PC)**

The **PERFORM Centre** is a clinical research facility focused on promoting healthy living through prevention. It includes: A gym furnished with the latest and best equipment; an athletic therapy clinic with specialized wellness programs including cooking workshops and exercise plans; and facilities for **Athletic Therapy** and **Exercise Science** students to undertake research.



### **LEARN MORE:**

Programs and admissions [concordia.ca/admissions](https://concordia.ca/admissions)

Tuition and Fees [concordia.ca/tuitionandfees](https://concordia.ca/tuitionandfees)

Residence [concordia.ca/residence](https://concordia.ca/residence)



# CONCORDIA